



**DATE:** August 25, 2025

**TO:** Mayor McNamara  
City Council

**FROM:** Carrie Hagerty, Finance Director

**RE:** Financial Discussion – July 2025

The monthly report provides information on General Fund revenue and expense performance through July 2025. The 2025 budget was approved with expenses of \$226.25 and revenues at \$226.3 million. The report also includes performance of major revenue sources for the Redevelopment funds and capital improvement program.

## GENERAL FUND REVENUE PERFORMANCE

### YEAR-TO-DATE FINANCIAL REPORT AS OF JULY 31, 2025

	7/31/2024 ACTUAL YTD	7/31/2025 ACTUAL YTD	YTD EXPECTED REVENUE	YTD OVER (UNDER) BUDGET	YTD OVER (UNDER) PERCENT	PROJECTED ANNUAL REVENUE	2025 ANNUAL BUDGET	PROJECTED OVER (UNDER) BUDGET	PROJECTED OVER (UNDER) PERCENT
<b>MAJOR REVENUES</b>									
PROPERTY TAXES	26,881,062	27,290,288	27,290,288	-	0.0%	47,760,958	47,760,958	-	0.0%
SALES TAX (5 of 12 payments)	12,834,154	14,480,297	13,269,143	1,211,154	9.1%	34,901,154	33,690,000	1,211,154	3.6%
USE TAX (6 of 12 payments)	2,784,051	1,100,208	2,304,000	(1,203,792)	-52.2%	3,296,208	4,500,000	(1,203,792)	-26.8%
INCOME TAX (6 of 12 payments)	13,581,203	14,556,545	13,833,600	722,945	5.2%	27,122,945	26,400,000	722,945	2.7%
PHONE UTILITY TAX (5 of 12 payments)	863,060	880,665	806,721	73,944	9.2%	1,973,944	1,900,000	73,944	3.9%
REPLACEMENT TAX (5 of 8 payments)	8,300,671	7,004,043	11,963,032	(4,958,989)	-41.5%	11,064,789	16,023,778	(4,958,989)	-30.9%
<b>TOTAL MAJOR REVENUES</b>	<b>65,244,201</b>	<b>65,312,046</b>	<b>69,466,784</b>	<b>(4,154,738)</b>	<b>-6.0%</b>	<b>126,119,998</b>	<b>130,274,736</b>	<b>(4,154,738)</b>	<b>-3.2%</b>
<b>OTHER REVENUES</b>									
LICENSES AND INSPECTIONS	4,268,862	3,595,859	4,034,333	(438,474)	-10.9%	6,477,526	6,916,000	(438,474)	-6.3%
UTILITY TAX	5,329,823	6,893,146	7,408,333	(515,187)	-7.0%	12,184,813	12,700,000	(515,187)	-4.1%
OTHER TAX	1,684,858	205,468	215,833	(10,366)	-4.8%	359,634	370,000	(10,366)	-2.8%
INTERGOVERNMENTAL	13,594,596	5,237,360	5,255,657	(18,297)	-0.3%	8,991,401	9,009,698	(18,297)	-0.2%
CHARGES FOR SERVICES	19,248,589	21,895,003	20,876,660	1,018,343	4.9%	36,806,903	35,788,560	1,018,343	2.8%
FINES	553,654	584,117	717,500	(133,384)	-18.6%	1,096,617	1,230,000	(133,384)	-10.8%
MISCELLANEOUS	6,121,153	5,579,242	4,141,958	1,437,284	34.7%	8,537,784	7,100,500	1,437,284	20.2%
REIMBURSEMENT FOR SERVICES	3,481,768	13,323,737	13,363,149	(39,413)	-0.3%	22,908,256	22,908,256	-	0.0%
<b>TOTAL OTHER REVENUES</b>	<b>54,283,302</b>	<b>57,313,932</b>	<b>56,013,425</b>	<b>1,300,507</b>	<b>2.3%</b>	<b>97,362,934</b>	<b>96,023,014</b>	<b>1,339,920</b>	<b>1.4%</b>
<b>TOTAL REVENUES</b>	<b>119,527,503</b>	<b>122,625,978</b>	<b>125,480,208</b>	<b>(2,854,231)</b>	<b>-2.3%</b>	<b>223,482,932</b>	<b>226,297,750</b>	<b>(2,814,818)</b>	<b>-1.2%</b>

Statewide revenues, including use tax and replacement tax are under budget after five to six months disbursement, while income tax is over budget. Sales tax and phone utility tax are over budget after five months disbursement. The first significant property tax disbursement was received in July. As expected, replacement tax and use tax continue to underperform and we will monitor these revenue sources throughout the year. A number of the other revenue sources are showing under budget due to timing of receipts, while miscellaneous and charges for services revenues are over budget resulting in other revenues being under budget 2.3%. The fire shop generated \$7,387 in revenue for mechanical work performed for outside agencies in July. 911 Division generated \$20,926 in revenue for 911 dispatch fees in July.

## GENERAL FUND EXPENSE PERFORMANCE

	7/31/2024 ACTUAL YTD	7/31/2025 ACTUAL YTD	YTD EXPECTED EXPENSE	YTD (OVER) UNDER BUDGET	YTD (OVER) UNDER PERCENT	PROJECTED ANNUAL EXPENSE	2025 ANNUAL BUDGET	PROJECTED (OVER) UNDER BUDGET	PROJECTED (OVER) UNDER PERCENT
MAYOR	551,570	577,273	621,770	44,497	7.2%	989,611	1,065,892	76,281	7.2%
COUNCIL	277,264	315,698	313,972	(1,726)	-0.5%	541,197	538,237	(2,960)	-0.5%
LEGAL	1,339,016	1,213,640	1,539,306	325,666	21.2%	2,080,526	2,638,811	558,285	21.2%
FINANCE	4,520,980	5,508,251	5,952,283	444,032	7.5%	9,442,716	10,203,914	761,198	7.5%
POLICE	46,346,973	47,998,501	52,020,483	4,021,982	7.7%	82,283,145	89,177,970	6,894,825	7.7%
FIRE	39,106,648	42,753,780	45,922,769	3,168,989	6.9%	81,292,194	78,724,747	(2,567,447)	-3.3%
PUBLIC WORKS	12,036,115	11,602,315	12,753,983	1,151,668	9.0%	19,889,683	21,863,971	1,974,288	9.0%
COMMUNITY & ECONOMIC DEVELOPME	9,506,345	10,307,388	10,421,571	114,183	1.1%	17,669,808	17,865,550	195,742	1.1%
FIRE & POLICE COMMISSION	83,820	131,409	183,291	51,882	28.3%	225,273	314,213	88,940	28.3%
ELECTION COMMISSION	458,835	800,805	904,754	103,949	11.5%	1,551,006	1,551,006	-	0.0%
HUMAN RESOURCES	714,440	700,155	889,517	189,362	21.3%	1,200,266	1,524,886	324,620	21.3%
WORKFORCE INVESTMENT BOARD	424,297	534,331	457,837	(76,494)	-16.7%	784,863	784,863	-	0.0%
<b>TOTAL EXPENDITURES</b>	<b>115,366,303</b>	<b>122,443,546</b>	<b>131,981,535</b>	<b>9,537,989</b>	<b>7.2%</b>	<b>217,950,286</b>	<b>226,254,060</b>	<b>8,303,774</b>	<b>3.7%</b>

Expenditures are at or under budget through seven months except for an overage in Workforce Investment Board and a slight overage in Council due to timing of expenses. Highlights of expenses to date are outlined below, and detail by budget unit is attached to this memo.

### *Public Safety*

- ) Regular salaries for the Police Department are under budget. Overtime is over budget at \$3,025,909 or 96.4%, compared to \$1,759,531 for the same period last year.
- ) Regular salaries for the Fire Department are under budget. Overtime is over budget at \$1,834,081 or 97.5%, compared to \$1,261,312 for the same period last year.
- ) Regular salaries for the 911 Division are under budget. Overtime is over budget at \$597,197 or 104.4%.

### *Public Works*

- ) Snow and ice expenses total \$3,325,921 at the end of July, or 73.9% of the total budget.
- ) Street Division overtime is under budget at \$79,750 or 31.9% of the total budget.
- ) Road salt expenses through May total \$985,013, with \$814,987 remaining for future road salt purchases.
- ) Pothole patching is under budget at \$547,969 or 35.4% of the total.
- ) In the Traffic Division, street light electricity is estimated at \$1,451,509 or 71.3% and will continue to be monitored throughout the year.

## CIP REVENUE PERFORMANCE

### CITY OF ROCKFORD CAPITAL IMPROVEMENT FUND

#### YEAR-TO-DATE FINANCIAL REPORT AS OF JULY 31, 2025

	7/31/2024 ACTUAL YTD	7/31/2025 ACTUAL YTD	YTD EXPECTED REVENUE	YTD OVER (UNDER) BUDGET	YTD OVER (UNDER) PERCENT	PROJECTED ANNUAL REVENUE	2025 ANNUAL BUDGET	PROJECTED OVER (UNDER) BUDGET	PROJECTED OVER (UNDER) PERCENT
CIP SALES TAX (5 of 12 payments)	8,876,845	9,807,316	8,758,525	1,048,791	12.0%	23,537,558	22,343,177	1,194,381	5.3%
MOTOR FUEL TAX (7 of 12 payments)	3,698,849	3,819,687	3,734,708	84,979	2.3%	6,548,035	6,790,378	(242,343)	-3.6%
<b>TOTAL REVENUES</b>	<b>12,575,694</b>	<b>13,627,003</b>	<b>12,493,233</b>	<b>1,133,770</b>	<b>9.1%</b>	<b>30,085,593</b>	<b>29,133,555</b>	<b>952,038</b>	<b>3.3%</b>

CIP sales tax disbursements are over budget with five disbursements. Motor Fuel Tax receipts are over budget with seven disbursements received to date.

## DEVELOPMENT FUNDS REVENUE PERFORMANCE

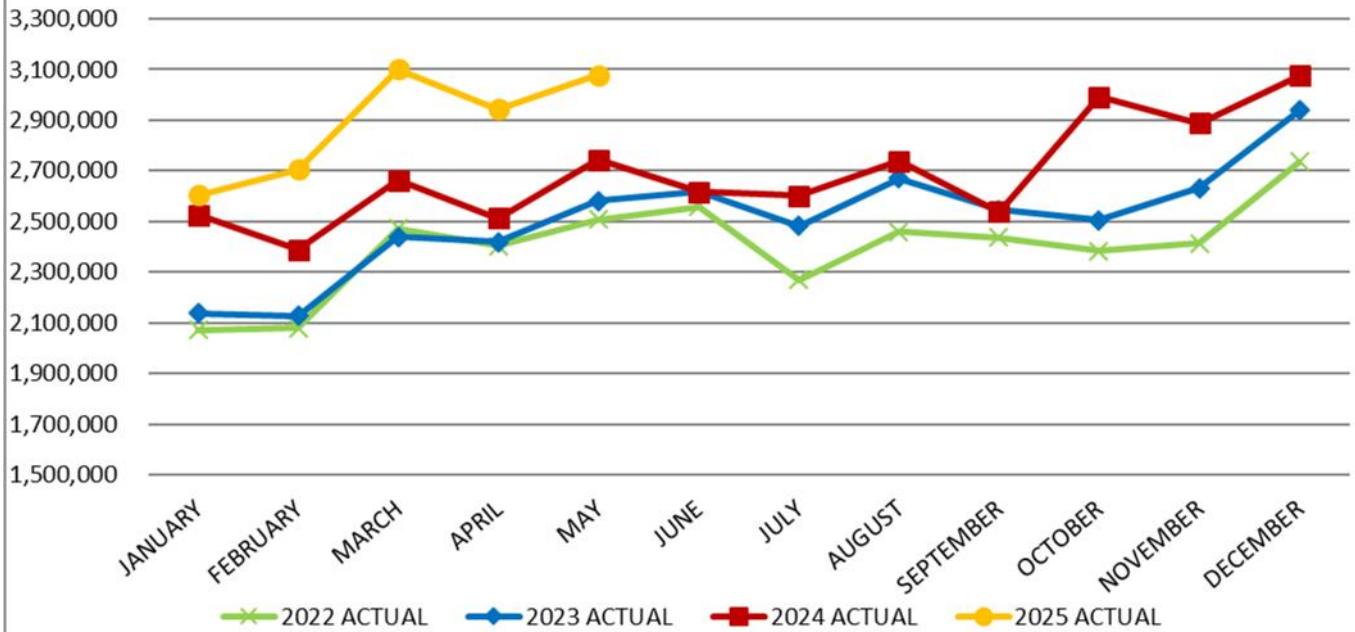
### CITY OF ROCKFORD REDEVELOPMENT/TOURISM FUNDS

#### YEAR-TO-DATE FINANCIAL REPORT AS OF JULY 31, 2025

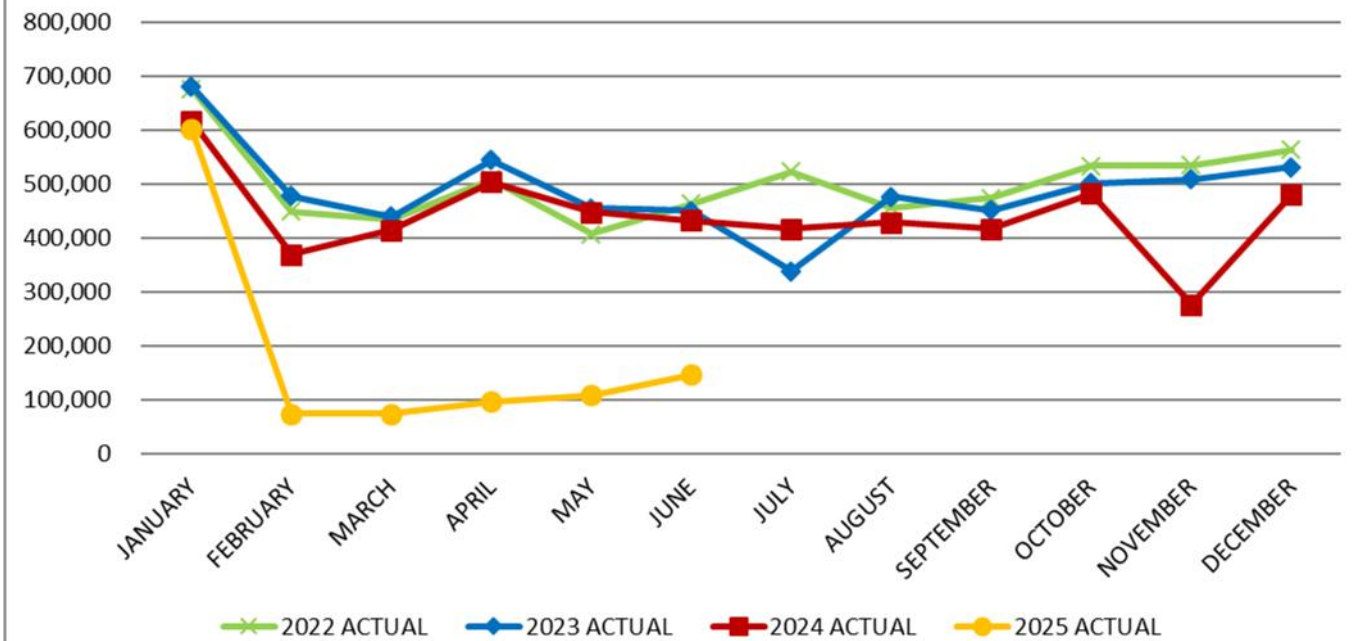
	7/31/2024 ACTUAL YTD	7/31/2025 ACTUAL YTD	YTD EXPECTED REVENUE	YTD OVER (UNDER) BUDGET	YTD OVER (UNDER) PERCENT	PROJECTED ANNUAL REVENUE	2025 ANNUAL BUDGET	PROJECTED OVER (UNDER) BUDGET	PROJECTED OVER (UNDER) PERCENT
<b>REDEVELOPMENT FUND</b>									
HOTEL/MOTEL TAX (7 of 12 months)	1,571,633	1,765,631	1,566,669	198,962	12.7%	3,026,796	3,071,900	(45,104)	-1.5%
PACKAGE LIQUOR TAX (7 of 12 months)	438,203	426,091	443,245	(17,154)	-3.9%	730,442	805,900	(75,458)	-9.4%
RESTAURANT TAX (7 of 12 months)	2,786,877	2,946,817	2,711,352	235,465	8.7%	5,051,686	4,841,700	209,986	4.3%
<b>TOTAL REVENUES</b>	<b>4,796,713</b>	<b>5,138,539</b>	<b>4,721,266</b>	<b>417,273</b>	<b>8.8%</b>	<b>8,808,924</b>	<b>8,719,500</b>	<b>89,424</b>	<b>1.0%</b>

Redevelopment Fund revenue is 8.8% over budget.

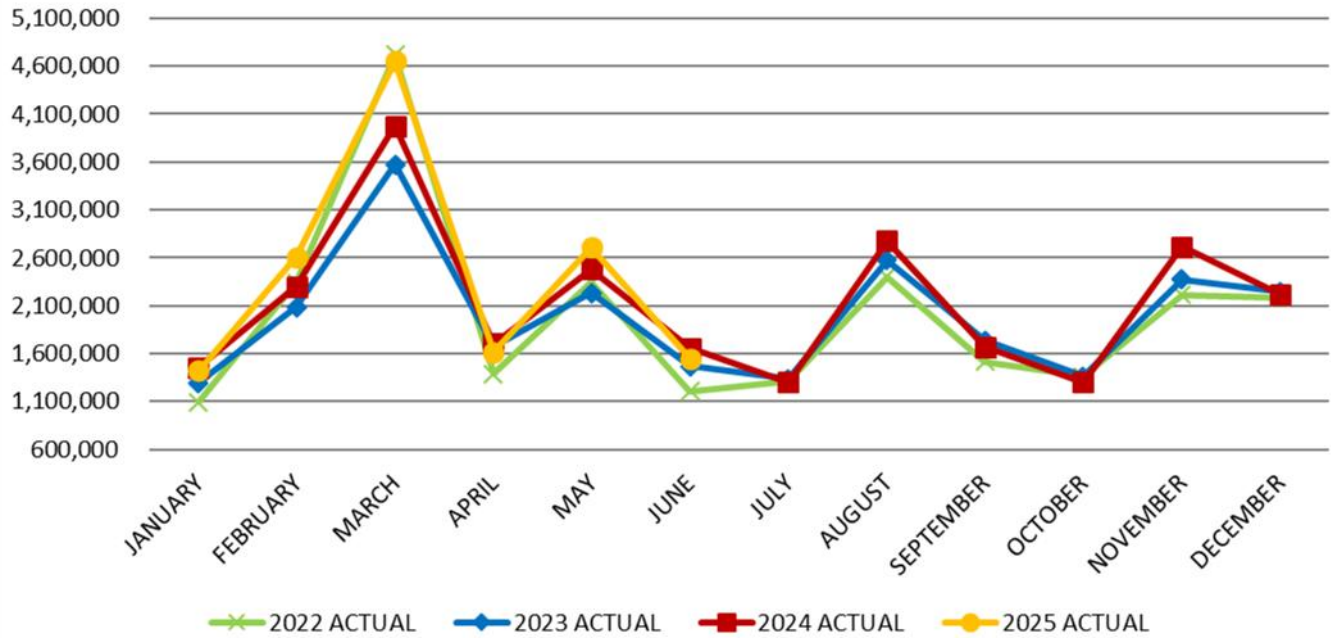
### Sales Tax Actual Revenue



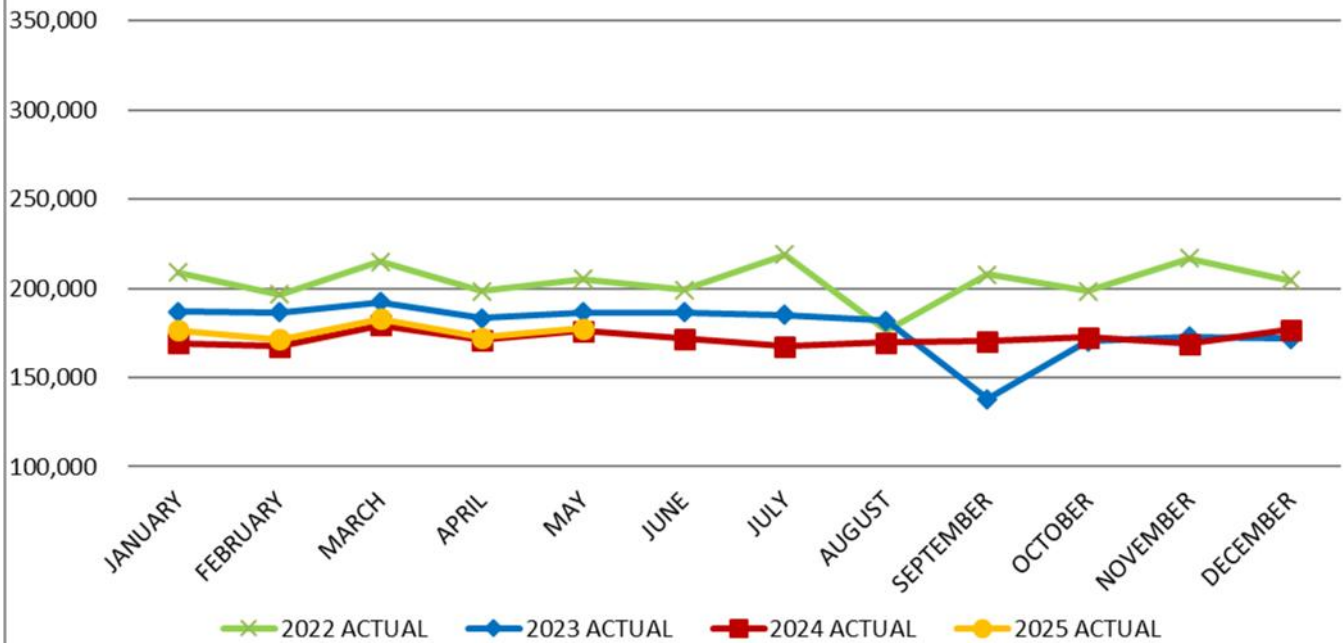
### Use Tax Actual Revenue



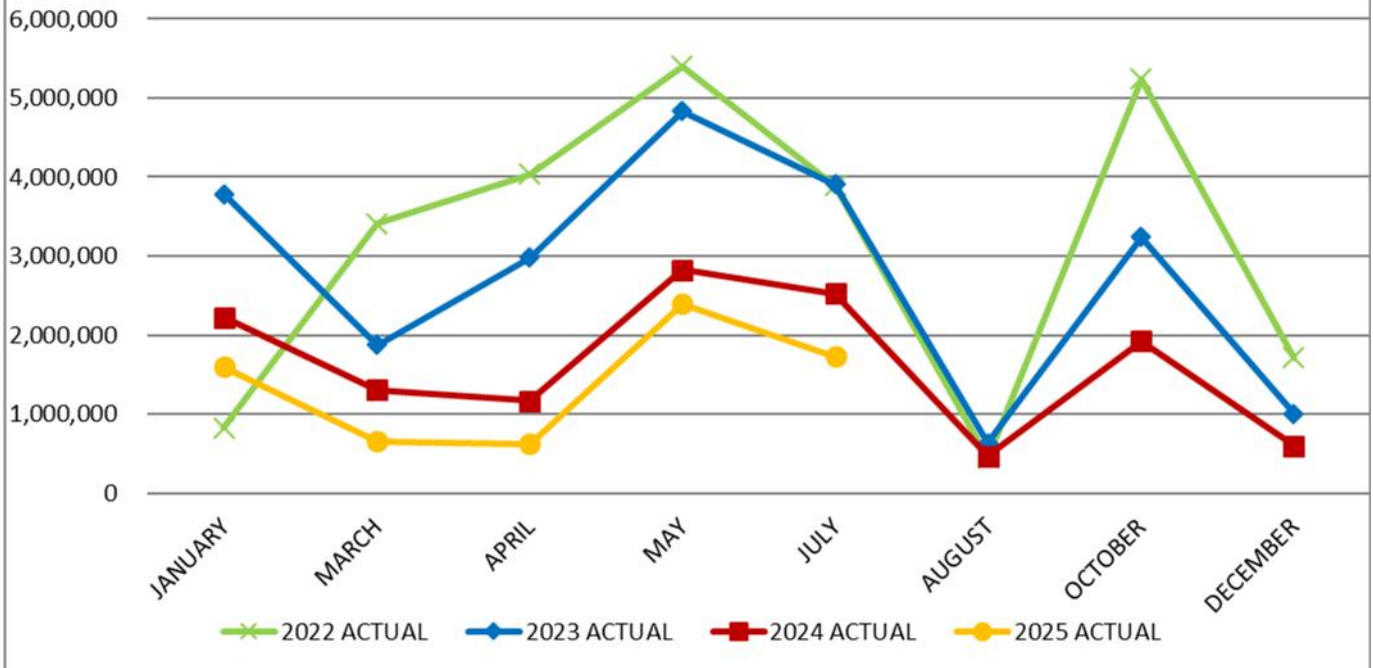
## Income Tax Actual Revenue



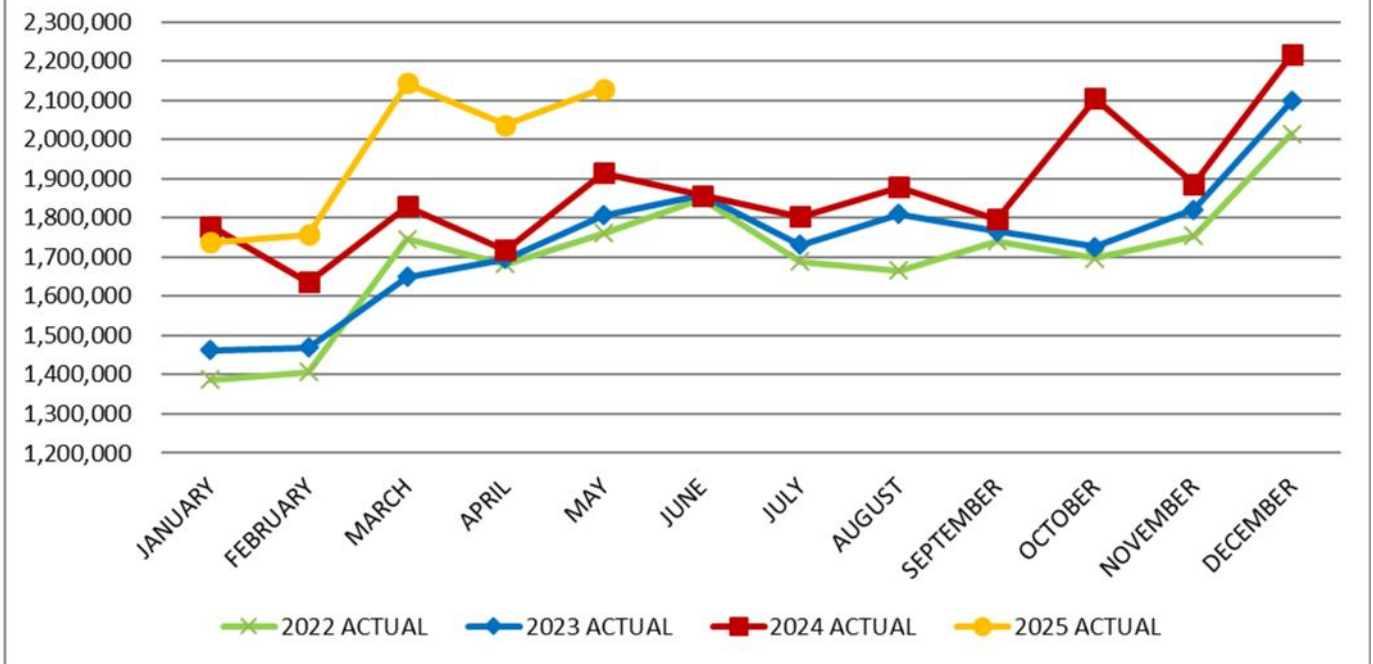
## Phone Tax Actual Revenue



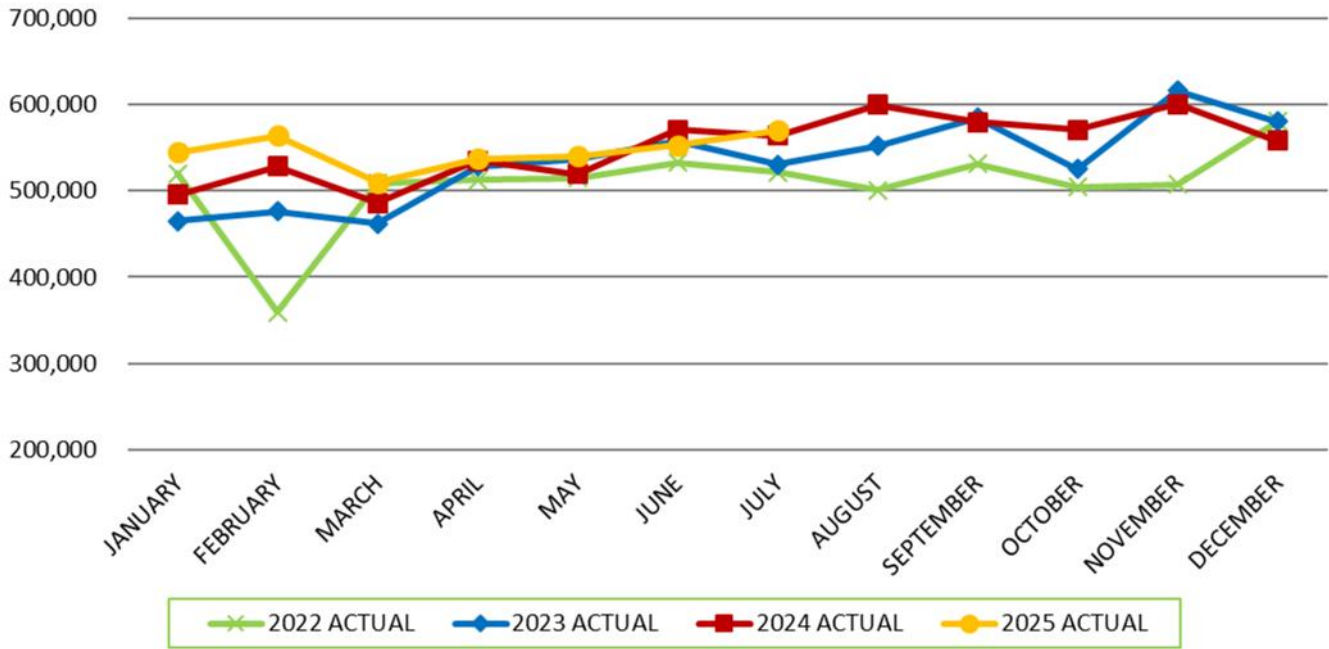
### Replacement Tax Actual Revenue



### CIP Sales Tax Actual Revenue



# Motor Fuel Tax Actual Revenue



**YTD BUDGET REPORT  
MAYOR'S OFFICE**

	2025	7/31/2025	58.3%	AVAILABLE
ACCOUNT	BUDGET	EXPENDITURES	PERCENT EXPENDED	BUDGET
71112 SALARIES PERMANENT	481,751	285,937	59.4%	195,814
71113 SALARIES TEMPORARY	30,000	2,516	8.4%	27,484
71251 IMRF	65,666	40,153	61.1%	25,513
71253 UNEMPLOYMENT	212	95	44.9%	117
71262 WORKMEN'S COMPENSATION	1,351	741	54.8%	610
71263 HEALTH INSURANCE	86,853	51,108	58.8%	35,746
71264 LIFE INSURANCE	440	122	27.8%	318
71271 PARKING BENEFITS	2,864	1,671	58.3%	1,193
<b>TOTAL PERSONNEL</b>	<b>669,137</b>	<b>382,342</b>	<b>57.1%</b>	<b>286,795</b>
72203 WIRELESS	9,000	4,033	44.8%	4,967
72204 TELEPHONE - VOIP	2,490	1,453	58.3%	1,038
72211 PRINTING & PUBLICATION	2,000	-	0.0%	2,000
72212 POSTAGE	50	-	0.0%	50
72214 TRAVEL	2,500	3,717	148.7%	(1,217)
72215 DUES	8,500	218	2.6%	8,283
72216 SUBSCRIPTIONS	600	1,087	181.2%	(487)
72263 MICROCOMPUTER	57,190	33,361	58.3%	23,829
72264 VEHICLE REPAIRS	3,210	4,136.97	128.9%	(927)
72265 FUEL	3,670	1,842	50.2%	1,828
72267 RISK MANAGEMENT	9,400	5,483	58.3%	3,917
72271 RENTAL EQUIPMENT	2,465	933	37.9%	1,532
72272 RENTAL BUILDING	159,180	92,985	58.4%	66,195
72290 EDUCATION AND TRAINING	2,000	1,259	63.0%	741
72299 MISC CONTRACTUAL	100,000	35,826	35.8%	64,174
<b>TOTAL CONTRACTUAL</b>	<b>362,255</b>	<b>186,333</b>	<b>51.4%</b>	<b>175,922</b>
75525 FOOD	9,500	5,612	59.1%	3,888
75560 OFFICE GENERAL SUPPLIES	5,000	1,028	20.6%	3,972
75561 PHOTOGRAPHY & REPRODUCTN	-	1,945	100.0%	(1,945)
75569 MISCELLANEOUS SUPPLIES	20,000	12	0.1%	19,988
<b>TOTAL SUPPLIES</b>	<b>34,500</b>	<b>8,597</b>	<b>24.9%</b>	<b>25,903</b>
<b>TOTAL MAYOR'S OFFICE</b>	<b>1,065,892</b>	<b>577,273</b>	<b>54.2%</b>	<b>488,619</b>



**YTD BUDGET REPORT  
CITY COUNCIL**

			58.3%	
ACCOUNT	2025 BUDGET	7/31/2025 EXPENDITURES	PERCENT EXPENDED	AVAILABLE BUDGET
71112 SALARIES PERMANENT	168,000	115,284	68.6%	52,716
71113 SALARIES TEMPORARY	350	-	0.0%	350
71251 IMRF	22,904	10,012	43.7%	12,892
71263 HEALTH INSURANCE	120,458	74,066	61.5%	46,392
71264 LIFE INSURANCE	1,540	200	13.0%	1,340
71271 PARKING BENEFITS	10,024	5,847	58.3%	4,177
<b>TOTAL PERSONNEL</b>	<b>323,276</b>	<b>205,409</b>	<b>63.5%</b>	<b>117,867</b>
72203 WIRELESS	9,000	2,722	30.2%	6,278
72211 PRINTING	300	280	93.3%	20
72214 TRAVEL	5,000	-	0.0%	5,000
72218 SERVICE CONTRACTS	120,000	60,000	50.0%	60,000
72263 MICROCOMPUTER	3,960	2,310	58.3%	1,650
72267 RISK MANAGEMENT	1,445	843	58.3%	602
72272 RENTAL BUILDING	65,040	37,940	58.3%	27,100
72290 EDUCATION AND TRAINING	3,500	-	0.0%	3,500
<b>TOTAL CONTRACTUAL</b>	<b>208,245</b>	<b>104,095</b>	<b>50.0%</b>	<b>104,150</b>
75525 FOOD	5,000	1,493	29.9%	3,507
75560 OFFICE GENERAL SUPPLIES	716	-	0.0%	716
75569 MISCELLANEOUS SUPPLIES	1,000	-	0.0%	1,000
75570 COMPUTER NONCAPITAL	-	4,700	100.0%	(4,700)
<b>TOTAL SUPPLIES</b>	<b>6,716</b>	<b>6,194</b>	<b>92.2%</b>	<b>522</b>
<b>TOTAL CITY COUNCIL</b>	<b>538,237</b>	<b>315,698</b>	<b>58.7%</b>	<b>222,539</b>

**YTD BUDGET REPORT  
LEGAL DEPARTMENT**

	2025	7/31/2025	58.3%	
ACCOUNT	BUDGET	EXPENDITURES	PERCENT EXPENDED	AVAILABLE BUDGET
71112 SALARIES PERMANENT	1,322,119	698,250	52.8%	623,869
71113 SALARIES TEMPORARY	31,500	13,406	42.6%	18,094
71122 SALARIES OVERTIME PERM	41,004	12	0.0%	40,992
71251 IMRF	185,059	98,127	53.0%	86,932
71253 UNEMPLOYMENT	778	442	56.8%	336
71262 WORKMEN'S COMPENSATION	3,814	1,993	52.3%	1,821
71263 HEALTH INSURANCE	354,498	187,313	52.8%	167,186
71264 LIFE INSURANCE	1,599	410	25.6%	1,189
71271 PARKING BENEFITS	10,388	6,060	58.3%	4,328
71292 CELL PHONE ALLOWANCE	884	255	28.8%	629
<b>TOTAL PERSONNEL</b>	<b>1,951,643</b>	<b>1,006,267</b>	<b>51.6%</b>	<b>945,376</b>
72203 WIRELESS	8,500	3,367	39.6%	5,133
72204 TELEPHONE VOIP	7,470	4,358	58.3%	3,113
72211 PRINTING & PUBLICATION	4,200	40	1.0%	4,160
72212 POSTAGE	700	181	25.9%	519
72214 TRAVEL	1,710	-	0.0%	1,710
72215 DUES	25,400	4,817	19.0%	20,583
72216 SUBSCRIPTIONS	12,600	910	7.2%	11,690
72217 ADVERTISING	300	-	0.0%	300
72218 SERVICE CONTRACTS	71,620	10,174	14.2%	61,446
72241 INSURANCE EXPENSE	150	-	0.0%	150
72263 MICROCOMPUTER	93,640	54,623	58.3%	39,017
72267 RISK MANAGEMENT	5,352	3,122	58.3%	2,230
72271 RENTAL EQUIPMENT	4,346	1,394	32.1%	2,952
72272 RENTAL BUILDING	159,180	92,855	58.3%	66,325
72281 PROF FEE LEGAL	241,000	1,456	0.6%	239,544
72290 EDUCATION AND TRAINING	10,000	60	0.6%	9,940
<b>TOTAL CONTRACTUAL</b>	<b>646,168</b>	<b>177,357</b>	<b>27.4%</b>	<b>468,811</b>
75509 BOOKS	25,000	23,801	95.2%	1,199
75520 SMALL EQUIPMENT AND TOOLS	500	-	0.0%	500
75525 FOOD	500	725	145.1%	(225)
75560 OFFICE GENERAL SUPPLIES	10,000	5,272	52.7%	4,728
75570 COMPUTER NONCAPITAL	5,000	218	4.4%	4,783
<b>TOTAL SUPPLIES</b>	<b>41,000</b>	<b>30,015</b>	<b>73.2%</b>	<b>10,985</b>
<b>TOTAL LEGAL DEPARTMENT</b>	<b>2,638,811</b>	<b>1,213,640</b>	<b>46.0%</b>	<b>1,425,171</b>

**YTD BUDGET REPORT  
FINANCE DEPARTMENT**

			58.3%	
ACCOUNT	2025 BUDGET	7/31/2025 EXPENDITURES	PERCENT EXPENDED	AVAILABLE BUDGET
71112 SALARIES PERMANENT	2,481,630	1,399,515	56.4%	1,082,115
71113 SALARIES TEMPORARY	12,500	2,271	18.2%	10,229
71122 SALARIES OVERTIME PERM	6,000	514	8.6%	5,486
71181 AFSCME WELLNESS BONUS	551	133	24.1%	418
71251 IMRF	338,349	238,006	70.3%	100,343
71253 UNEMPLOYMENT	1,761	927	52.6%	834
71262 WORKMEN'S COMPENSATION	6,913	4,076	59.0%	2,837
71263 HEALTH INSURANCE	570,529	318,919	55.9%	251,610
71264 LIFE INSURANCE	3,581	950	26.5%	2,631
71271 PARKING BENEFITS	21,865	12,755	58.3%	9,110
71292 CELL PHONE ALLOWANCE	2,210	561	25.4%	1,649
<b>TOTAL PERSONNEL</b>	<b>3,445,889</b>	<b>1,978,627</b>	<b>57.4%</b>	<b>1,467,262</b>
72203 WIRELESS	3,710	1,224	33.0%	2,486
72204 TELEPHONE VOIP	13,700	7,992	58.3%	5,708
72211 PRINTING & PUBLICATION	4,350	1,286	29.6%	3,064
72212 POSTAGE	227,625	116,173	51.0%	111,452
72214 TRAVEL	2,450	1,070	43.7%	1,380
72215 DUES	4,160	1,945	46.8%	2,215
72216 SUBSCRIPTIONS	170	554	326.1%	(384)
72217 ADVERTISING	10,000	6,734	67.3%	3,266
72218 SERVICE CONTRACTS	369,100	151,347	41.0%	217,753
72229 UNEMPLOYMENT TAX BENEFIT	-	23,964	100.0%	(23,964)
72231 UTILITIES-BLDG & OFF	100	-	0.0%	100
72263 MICROCOMPUTER	300,480	175,280	58.3%	125,200
72264 VEHICLE REPAIRS	500	-	0.0%	500
72267 RISK MANAGEMENT	316,730	184,759	58.3%	131,971
72270 CREDIT CARD SERVICE FEE	500,000	244,676	48.9%	255,324
72271 RENTAL EQUIPMENT	11,400	3,050	26.8%	8,350
72272 RENTAL BUILDING	287,510	167,714	58.3%	119,796
72282 PROF FEE AUDITING	9,240	5,390	58.3%	3,850
72288 PROF FEE MISC	145,000	-	0.0%	145,000
72290 EDUCATION AND TRAINING	12,350	9,566	77.5%	2,784
72292 CONSULTING FEE	12,600	-	0.0%	12,600
72299 MISCELLANEOUS CONTRACTUAL	43,450	32,250	74.2%	11,200
<b>TOTAL CONTRACTUAL</b>	<b>2,274,625</b>	<b>1,134,974</b>	<b>49.9%</b>	<b>1,139,651</b>
75520 SMALL EQUIPMENT AND TOOLS	150	-	0.0%	150
75524 CLOTHING	500	2,526	505.2%	(2,026)
75525 FOOD	6,200	2,215	35.7%	3,985
75560 OFFICE GENERAL SUPPLIES	26,250	12,802	48.8%	13,448

**YTD BUDGET REPORT  
FINANCE DEPARTMENT**

ACCOUNT	2025 BUDGET	7/31/2025 EXPENDITURES	58.3% PERCENT EXPENDED	AVAILABLE BUDGET
TOTAL SUPPLIES	33,100	17,543	53.0%	15,557
72302 TRANF TO TRANSIT SUBSIDY	1,869,000	934,500	50.0%	934,500
76754 COMM DEVELOP PROJECT	-	100,000	100.0%	(100,000)
76760 PROPERTY TAXES	-	243	100.0%	(243)
76790 MISCELLANEOUS	600,000	70,144	11.7%	529,856
76794 SALES TAX REBATE	355,000	-	0.0%	355,000
77729 TRANF TO CPTL IMPROVE FD	1,500,000	1,198,528	79.9%	301,472
77733 TRANF TO BLDG MAINT	124,500	72,625	58.3%	51,875
TOTAL OTHER	4,450,300	2,377,108	53.4%	2,073,192
TOTAL FINANCE DEPARTMENT	10,203,914	5,508,251	54.0%	4,695,663

**YTD BUDGET REPORT**  
**HUMAN RESOURCES DEPARTMENT**

			58.3%	
ACCOUNT	2025 BUDGET	7/31/2025 EXPENDITURES	PERCENT EXPENDED	AVAILABLE BUDGET
71112 SALARIES PERMANENT	604,351	347,459	57.5%	256,892
71113 SALARIES TEMPORARY	-	3,156	100.0%	(3,156)
71180 EMPLOYMENT AGENCY WAGES	2,800	-	0.0%	2,800
71251 IMRF/FICA	82,376	48,789	59.2%	33,587
71253 UNEMPLOYMENT	319	193	60.5%	126
71262 WORKMEN'S COMPENSATION	1,696	1,627	96.0%	69
71263 HEALTH INSURANCE	121,057	68,147	56.3%	52,910
71264 LIFE INSURANCE	661	158	24.0%	503
71271 PARKING BENEFITS	4,297	2,506	58.3%	1,791
<b>TOTAL PERSONNEL</b>	<b>817,557</b>	<b>472,036</b>	<b>57.7%</b>	<b>345,521</b>
72203 WIRELESS	5,300	2,247	42.4%	3,053
72204 TELEPHONE VOIP	3,320	1,937	58.3%	1,383
72211 PRINTING & PUBLICATION	4,300	-	0.0%	4,300
72212 POSTAGE	110	18	16.5%	92
72214 TRAVEL	34,400	1,608	4.7%	32,792
72215 DUES	1,700	321	18.9%	1,380
72216 SUBSCRIPTIONS	8,275	355	4.3%	7,920
72217 ADVERTISING	40,000	12,100	30.3%	27,900
72218 SERVICE CONTRACTS	125,000	27,656	22.1%	97,344
72255 MAINT-OFFICE & FURNITURE	500	-	0.0%	500
72263 MICROCOMPUTER	86,180	50,272	58.3%	35,908
72267 RISK MANAGEMENT	2,164	1,262	58.3%	902
72271 RENTAL EQUIPMENT	4,000	925	23.1%	3,075
72272 RENTAL BUILDING	72,680	42,397	58.3%	30,283
72281 PROF FEE LEGAL	1,500	-	0.0%	1,500
72284 PROF FEE MEDICAL	85,000	3,695	4.3%	81,305
72285 NEGOTIATIONS	500	-	0.0%	500
72288 MISC PROF FEES	22,500	9,244	41.1%	13,256
72290 EDUCATION AND TRAINING	165,000	66,533	40.3%	98,467
72299 MISCELLANEOUS CONTRACTUAL	27,500	4,094	14.9%	23,406
<b>TOTAL CONTRACTUAL</b>	<b>689,929</b>	<b>224,663</b>	<b>32.6%</b>	<b>465,266</b>
75509 BOOKS	500	-	0.0%	500
75524 CLOTHING	900	-	0.0%	900
75525 FOOD	4,000	-	0.0%	4,000
75560 OFFICE GENERAL SUPPLIES	10,500	3,456	32.9%	7,044
75561 PHOTOGRAPHY & REPRODUCTN	1,500	-	0.0%	1,500
<b>TOTAL SUPPLIES</b>	<b>17,400</b>	<b>3,456</b>	<b>19.9%</b>	<b>13,944</b>
<b>TOTAL HUMAN RESOURCES DEPARTMENT</b>	<b>1,524,886</b>	<b>700,155</b>	<b>45.9%</b>	<b>824,731</b>

**YTD BUDGET REPORT  
BOARD OF ELECTIONS**

			58.3%	
ACCOUNT	2025 BUDGET	7/31/2025 EXPENDITURES	PERCENT USED	AVAILABLE BUDGET
71111 SALARIES ADMINISTRATION	11,218	-	0.0%	11,218
71112 SALARIES PERMANENT	183,227	81,053	44.2%	102,174
71113 SALARIES TEMPORARY	325,336	-	0.0%	325,336
71122 SALARIES OVERTIME PERM	23,800	3,160	13.3%	20,640
71123 SALARIES OVERTIME TEMP	9,000	-	0.0%	9,000
71180 EMPLOYEE AGENCY WAGES	15,000	-	0.0%	15,000
71251 IMRF	34,725	12,008	34.6%	22,717
71253 UNEMPLOYMENT	900	274	30.4%	626
71263 HEALTH INSURANCE	66,650	101,325	152.0%	(34,675)
<b>TOTAL PERSONNEL</b>	<b>669,856</b>	<b>197,820</b>	<b>29.5%</b>	<b>472,036</b>
72211 PRINTING & PUBLICATION	130,050	-	0.0%	130,050
72212 POSTAGE	47,000	-	0.0%	47,000
72213 TELEPHONE	1,000	-	0.0%	1,000
72214 TRAVEL	3,000	-	0.0%	3,000
72215 DUES	2,000	-	0.0%	2,000
72216 SUBSCRIPTIONS	1,000	-	0.0%	1,000
72217 ADVERTISING	45,900	-	0.0%	45,900
72231 UTILITIES-BLDG & OFF	21,130	360	1.7%	20,770
72241 INSURANCE EXPENSE	21,000	-	0.0%	21,000
72251 MAINT-BUILDING	6,500	-	0.0%	6,500
72255 MAINT-OFFICE & FURNITURE	5,000	-	0.0%	5,000
72259 CONTRACTED JANITORIAL SER	9,460	-	0.0%	9,460
72271 RENTAL EQUIPMENT	8,400	-	0.0%	8,400
72272 RENTAL BUILDING	4,500	2,625	58.3%	1,875
72281 PROF FEE LEGAL	35,500	-	0.0%	35,500
72282 PROF FEE AUDITING	10,000	-	0.0%	10,000
72295 GARBAGE - COMPOSTING	1,800	-	0.0%	1,800
72297 GARBAGE COLLECTION	1,800	-	0.0%	1,800
72299 MISCELLANEOUS CONTRACTUAL	434,510	600,000	138.1%	(165,490)
<b>TOTAL CONTRACTUAL</b>	<b>789,550</b>	<b>602,985</b>	<b>76.4%</b>	<b>186,565</b>
75520 SMALL EQUIPMENT AND TOOLS	5,500	-	0.0%	5,500
75546 JANITORIAL SUPPLIES	3,000	-	0.0%	3,000
75560 OFFICE GENERAL SUPPLIES	16,500	-	0.0%	16,500
75570 COMPUTER NONCAPITAL	16,600	-	0.0%	16,600
<b>TOTAL SUPPLIES</b>	<b>41,600</b>	<b>-</b>	<b>0.0%</b>	<b>41,600</b>
79920 OFFICE EQUIP & FURNT	50,000	-	0.0%	50,000
<b>TOTAL OTHER</b>	<b>50,000</b>	<b>-</b>	<b>0.0%</b>	<b>50,000</b>
<b>TOTAL BOARD OF ELECTIONS</b>	<b>1,551,006</b>	<b>800,805</b>	<b>51.6%</b>	<b>750,201</b>

**YTD BUDGET REPORT  
POLICE DEPARTMENT**

	2025	7/31/2025	58.3% PERCENT	AVAILABLE
ACCOUNT	BUDGET	EXPENDITURES	EXPENDED	BUDGET
71112 SALARIES PERMANENT	33,218,871	18,334,003	55.2%	14,884,868
71113 SALARIES TEMPORARY	127,450	-	0.0%	127,450
71118 SEVERANCE PAY	265,000	445,740	168.2%	(180,740)
71119 OUT OF CLASS PAY	11,700	424	3.6%	11,276
71122 SALARIES OVERTIME PERM	3,138,884	3,025,909	96.4%	112,975
71133 POLICE ON-CALL	61,450	48,045	78.2%	13,405
71180 EMPLOYEE AGENCY WAGES	35,000	32,856	93.9%	2,144
71181 AFSCME WELLNESS BONUS	-	264	100.0%	(264)
71230 PENSION CONTRIBUTION	15,721,965	9,071,704	57.7%	6,650,261
71251 IMRF	875,063	535,638	61.2%	339,425
71253 UNEMPLOYMENT	18,507	9,702	52.4%	8,805
71262 WORKMEN'S COMPENSATION	1,129,243	782,588	69.3%	346,655
71263 HEALTH INSURANCE	6,896,884	3,516,594	51.0%	3,380,290
71264 LIFE INSURANCE	62,975	9,755	15.5%	53,220
71265 RETIREE HEALTH INSURANCE	182,000	-	0.0%	182,000
71272 CLOTHING ALLOWANCE	82,400	42,942	52.1%	39,458
71274 POWER TEST AWARD	93,000	-	0.0%	93,000
71290 PAGER ALLOWANCE	34,062	16,050	47.1%	18,013
<b>TOTAL PERSONNEL</b>	<b>61,954,454</b>	<b>35,872,213</b>	<b>57.9%</b>	<b>26,082,241</b>
72203 WIRELESS SERVICE	275,000	119,828	43.6%	155,172
72204 VOIP	77,640	45,290	58.3%	32,350
72211 PRINTING & PUBLICATION	37,850	3,072	8.1%	34,778
72212 POSTAGE	13,450	2,628	19.5%	10,822
72213 TELEPHONE	-	1,999	100.0%	(1,999)
72214 TRAVEL	91,250	31,381	34.4%	59,869
72215 DUES	28,610	6,922	24.2%	21,688
72216 SUBSCRIPTIONS	4,145	624	15.1%	3,521
72217 ADVERTISING	23,000	23,672	102.9%	(672)
72218 SERVICE CONTRACTS	3,122,980	2,251,979	72.1%	871,001
72219 OTHER CONTRACTUAL SERVICE	53,900	3,590	6.7%	50,310
72231 UTILITIES-BLDG & OFF	57,300	46,860	81.8%	10,440
72251 MAINT-BUILDING	580,978	-	0.0%	580,978
72252 MAINT-EQUIPMENT	40,600	-	0.0%	40,600
72254 MAINT-VEHICLES	166,250	329	0.2%	165,921
72257 MAINT-COMMUNICATION EQUIP	1,061,410	861,996	81.2%	199,414
72263 MICROCOMPUTER	2,626,810	1,532,306	58.3%	1,094,504
72264 VEHICLE REPAIRS	1,065,621	546,672	51.3%	518,949
72265 FUEL	798,360	412,117	51.6%	386,243
72266 VEHICLE VENDOR SERVICE	25,400	9,001	35.4%	16,399
72267 RISK MANAGEMENT	660,809	385,472	58.3%	275,337
72269 SERV CHARGE COMMUNICATION	4,279,429	2,496,334	58.3%	1,783,095
72270 CREDIT CARD SERVICE FEE	15,000	851	5.7%	14,149
72271 RENTAL EQUIPMENT	161,340	24,654	15.3%	136,686

**YTD BUDGET REPORT  
POLICE DEPARTMENT**

	2025	7/31/2025	58.3% PERCENT	AVAILABLE
ACCOUNT	BUDGET	EXPENDITURES	EXPENDED	BUDGET
72272 RENTAL BUILDING	638,920	372,703	58.3%	266,217
72284 PROF FEE MEDICAL	17,700	7,461	42.2%	10,239
72290 EDUCATION AND TRAINING	770,405	116,232	15.1%	654,173
72292 CONSULTING FEE	10,000	-	0.0%	10,000
72299 MISCELLANEOUS CONTRACTUAL	67,900	6,124	9.0%	61,776
TOTAL CONTRACTUAL	16,772,057	9,310,096	55.5%	7,461,961
75509 BOOKS	1,850	-	0.0%	1,850
75520 SMALL EQUIPMENT AND TOOLS	905,654	104,776	11.6%	800,878
75521 MEDICINE AND DRUGS	22,100	5,591	25.3%	16,509
75524 CLOTHING	325,840	120,953	37.1%	204,887
75525 FOOD	52,400	7,910	15.1%	44,490
75527 LINENS AND LAUNDRY	4,000	2,945	73.6%	1,055
75545 MAINT-COMMUNICATIONS	12,400	-	0.0%	12,400
75546 MAINT-JANITORIAL & CLNG	1,100	-	0.0%	1,100
75560 OFFICE GENERAL SUPPLIES	34,650	11,315	32.7%	23,335
75561 PHOTOGRAPHY & REPRODUCTN	15,100	-	0.0%	15,100
75569 MISCELLANEOUS SUPPLIES	-	9,314	100.0%	(9,314)
75570 COMPUTER NONCAPITAL	163,306	60,927	37.3%	102,379
75590 BUILDING NONCAPITAL	10,000	-	0.0%	10,000
75591 OTHER BUILDING IMPR NONCAPITAL	27,175	-	0.0%	27,175
75592 EQUIP & FURNITURE NONCAPITAL	968,100	216,020	22.3%	752,080
TOTAL SUPPLIES	2,543,675	539,752	21.2%	2,003,923
76760 PROPERTY TAXES	40,000	-	0.0%	40,000
76790 MISCELLANEOUS	-	9,300	100.0%	(9,300)
77721 TRANSFER TO DEBT SERVICE	2,777,392	1,369,172	49.3%	1,408,220
77762 TRANSFER TO CAPITAL FUND	1,231,459	718,351	58.3%	513,108
77768 TRANSFER TO SPEC REV FD	387,266	178,966	46.2%	208,300
78758 NOTE/BOND ISSUE COST	-	650	100.0%	(650)
TOTAL OTHER	4,436,117	2,276,440	51.3%	2,159,677
79922 VEHICLE & OPERATING EQUIP	3,471,667	-	0.0%	3,471,667
TOTAL CAPITAL	3,471,667	0	0.0%	3,471,667
TOTAL POLICE DEPARTMENT	89,177,970	47,998,501	53.8%	41,179,469



**YTD BUDGET REPORT  
FIRE DEPARTMENT**

	2025	7/31/2025	58.3% PERCENT USED	AVAILABLE BUDGET
	BUDGET	EXPENDED		
71112 SALARIES PERMANENT	29,743,412	17,206,518	57.8%	12,536,894
71113 SALARIES TEMPORARY	25,000	15,530	62.1%	9,471
71118 SEVERANCE PAY	350,000	510,069	145.7%	(160,069)
71119 OUT OF CLASS PAY	168,000	127,710	76.0%	40,290
71122 SALARIES OVERTIME PERM	1,881,575	1,834,081	97.5%	47,494
71181 AFSCME WELLNESS BONUS	200	-	0.0%	200
71230 PENSION CONTRIBUTION	18,890,901	10,981,267	58.1%	7,909,634
71251 IMRF/FICA	495,500	323,017	65.2%	172,483
71253 UNEMPLOYMENT	15,484	8,969	57.9%	6,515
71262 WORKMEN'S COMPENSATION	1,559,955	1,128,847	72.4%	431,108
71263 HEALTH INSURANCE	6,245,313	3,673,154	58.8%	2,572,159
71264 LIFE INSURANCE	31,751	8,990	28.3%	22,761
71265 RETIREE HEALTH INSURANCE	200,200	-	0.0%	200,200
71271 PARKING	47,058	27,451	58.3%	19,608
71272 CLOTHING ALLOWANCE	92,305	36,990	40.1%	55,315
71290 PAGER ALLOWANCE	30,000	41,284	137.6%	(11,284)
71292 CELL PHONE ALLOWANCE	-	272	100.0%	(272)
<b>TOTAL PERSONNEL</b>	<b>59,776,654</b>	<b>35,924,149</b>	<b>60.1%</b>	<b>23,852,505</b>
72203 WIRELESS SERVICE	60,000	33,122	55.2%	26,878
72204 TELEPHONE-VOIP	63,110	36,814	58.3%	26,296
72211 PRINTING & PUBLICATION	6,950	2,244	32.3%	4,706
72212 POSTAGE	5,500	1,805	32.8%	3,695
72213 TELEPHONE	3,200	2,683	83.8%	517
72214 TRAVEL	30,350	11,287	37.2%	19,063
72215 DUES	17,600	16,731	95.1%	869
72216 SUBSCRIPTIONS	13,900	4,472	32.2%	9,428
72217 ADVERTISING	20,000	217	1.1%	19,783
72218 SERVICE CONTRACTS	1,157,400	246,666	21.3%	910,734
72231 UTILITIES-BLDG & OFF	98,100	83,101	84.7%	14,999
72251 MAINT-BUILDING	1,200	4,950	412.5%	(3,750)
72257 MAINT-COMMUNICATION EQUIPMENT	35,150	2,523	7.2%	32,627
72259 CONTRACTED JANITORIAL SERVICE	18,000	8,774	48.7%	9,226
72263 MICROCOMPUTER	979,582	571,423	58.3%	408,159
72264 VEHICLE REPAIRS	18,190	66,026	363.0%	(47,836)
72265 FUEL	413,220	188,048	45.5%	225,172
72266 VEHICLE VENDOR SERVICE	137,000	128,310	93.7%	8,690
72267 RISK MANAGEMENT	255,142	148,833	58.3%	106,309
72269 SERV CHARGE COMMUNICATION	1,743,717	1,017,168	58.3%	726,549
72271 RENTAL EQUIPMENT	12,000	8,069	67.2%	3,931
72272 RENTAL BUILDING	372,410	217,342	58.4%	155,068

**YTD BUDGET REPORT  
FIRE DEPARTMENT**

	2025	7/31/2025	58.3% PERCENT USED	AVAILABLE BUDGET
	BUDGET	EXPENDED		
72274 RENTAL CAR CENTRAL GARAGE	-	2,939	100.0%	(2,939)
72283 ENGINEERING-DESIGN	-	11,662	100.0%	(11,662)
72284 PROF FEE MEDICAL	31,100	3,068	9.9%	28,032
72288 PROF FEES - MISCELLANEOUS	35,000	51,233	146.4%	(16,233)
72290 EDUCATION AND TRAINING	68,200	55,268	81.0%	12,932
72297 GARBAGE COLLECTION	6,500	9,693	149.1%	(3,193)
72299 MISCELLANEOUS CONTRACTUAL	26,750	59,920	224.0%	(33,170)
73100 PASS THROUGH GRANT	-	149,558	100.0%	(149,558)
<b>TOTAL CONTRACTUAL</b>	<b>5,629,271</b>	<b>3,143,949</b>	<b>55.9%</b>	<b>2,485,322</b>
75509 BOOKS	6,000	2,539	42.3%	3,462
75520 SMALL EQUIPMENT AND TOOLS	381,130	202,714	53.2%	178,416
75521 MEDICINE AND DRUGS	120,020	66,155	55.1%	53,865
75524 CLOTHING	716,850	333,400	46.5%	383,450
75525 FOOD	10,500	3,500	33.3%	7,000
75526 FUEL AND LUBRICANTS	30,000	9,333	31.1%	20,667
75527 LINENS AND LAUNDRY	37,125	21,486	57.9%	15,639
75529 OTHER SUPPLIES	20,000	784	3.9%	19,216
75540 MAINT-BUILDING	10,000	10,033	100.3%	(33)
75541 MAINT- GROUNDS	23,000	3,329	14.5%	19,671
75543 MAINT-EQUIPMENT	207,850	147,251	70.8%	60,599
75544 MAINT-VEHICLES	500,500	205,290	41.0%	295,210
75545 MAINT-COMMUNICATIONS	5,000	12,989	259.8%	(7,989)
75546 MAINT-JANITORIAL & CLNG	60,000	31,377	52.3%	28,623
75560 OFFICE GENERAL SUPPLIES	39,200	30,755	78.5%	8,445
75561 PHOTOGRAPHY & REPRODUCTN	41,000	7,325	17.9%	33,675
75570 COMPUTER NONCAPITAL	635,378	130,047	20.5%	505,331
75590 BUILDINGS & IMPROV NONCAPITAL	-	15,675	100.0%	(15,675)
75592 EQUIP & FURNITURE NONCAPITAL	275,000	104,626	38.0%	170,374
<b>TOTAL SUPPLIES</b>	<b>3,118,553</b>	<b>1,338,607</b>	<b>42.9%</b>	<b>1,779,946</b>
76790 MISCELLANEOUS	-	628	100.0%	(628)
77721 TRANS TO DEBT SERVICE	382,994	222,888	58.2%	160,106
77762 TRANS TO CAPITAL LEASE	1,107,175	645,852	58.3%	461,323
<b>TOTAL OTHER</b>	<b>1,490,169</b>	<b>869,368</b>	<b>58.3%</b>	<b>620,801</b>
79911 BUILDING-IMPROVEMENTS	-	731,052	100%	(731,052)
79922 VEHICLE & OPERATING EQUIP	8,710,100	746,654	8.6%	7,963,446
<b>TOTAL CAPITAL</b>	<b>8,710,100</b>	<b>1,477,706</b>	<b>17.0%</b>	<b>7,232,394</b>
<b>TOTAL FIRE DEPARTMENT</b>	<b>78,724,747</b>	<b>42,753,780</b>	<b>54.3%</b>	<b>35,970,967</b>

**YTD BUDGET REPORT**  
**911 DIVISION**

	2025	7/31/2025	58.3%	
	BUDGET	EXPENDED	PERCENT USED	AVAILABLE BUDGET
71112 SALARIES PERMANENT	4,192,962	2,367,589	56.5%	1,825,373
71113 SALARIES TEMPORARY	-	977	100.0%	(977)
71122 SALARIES OVERTIME PERM	572,000	597,197	104.4%	(25,197)
71181 AFSCME WELLNESS BONUS	500	372	74.3%	129
71251 IMRF/FICA	571,522	415,369	72.7%	156,153
71253 UNEMPLOYMENT	2,970	1,530	51.5%	1,440
71262 WORKMEN'S COMPENSATION	11,586	8,373	72.3%	3,213
71263 HEALTH INSURANCE	1,100,138	555,934	50.5%	544,204
71264 LIFE INSURANCE	5,830	1,571	27.0%	4,259
71272 CLOTHING ALLOWANCE	8,500	6,445	75.8%	2,055
71292 CELL PHONE ALLOWANCE	1,000	510	51.0%	490
<b>TOTAL PERSONNEL</b>	<b>6,467,008</b>	<b>3,955,866</b>	<b>61.2%</b>	<b>2,511,142</b>
72203 WIRELESS SERVICE	2,900	1,525	52.6%	1,375
72211 PRINTING & PUBLICATION	1,000	-	0.0%	1,000
72212 POSTAGE	100	-	0.0%	100
72213 TELEPHONE	190,000	-	0.0%	190,000
72214 TRAVEL	500	-	0.0%	500
72215 DUES	500	-	0.0%	500
72216 SUBSCRIPTIONS	300	-	0.0%	300
72218 SERVICE CONTRACTS	404,000	211	0.1%	403,789
72251 MAINT-BUILDING	2,500	1,266	50.7%	1,234
72263 MICROCOMPUTER	153,110	89,314	58.3%	63,796
72267 RISK MANAGEMENT	29,550	17,238	58.3%	12,313
72271 RENTAL EQUIPMENT	5,000	1,380	27.6%	3,620
72282 PROF FEE AUDITING	5,930	-	0.0%	5,930
72290 EDUCATION AND TRAINING	5,200	-	0.0%	5,200
72292 CONSULTING FEE	200	-	0.0%	200
72299 MISCELLANEOUS CONTRACTUAL	50,000	-	0.0%	50,000
<b>TOTAL CONTRACTUAL</b>	<b>850,790</b>	<b>110,933</b>	<b>13.0%</b>	<b>739,857</b>
75520 SMALL EQUIPMENT AND TOOLS	4,000	-	0.0%	4,000
75524 CLOTHING	23,000	10,943	47.6%	12,057
75525 FOOD	200	-	0.0%	200
75527 LINENS AND LAUNDRY	100	-	0.0%	100
75546 MAINT-JANITORIAL & CLNG	200	-	0.0%	200
75560 OFFICE GENERAL SUPPLIES	2,000	510	25.5%	1,490
75570 COMPUTER NON-CAPITAL	12,500	-	0.0%	12,500
<b>TOTAL SUPPLIES</b>	<b>42,000</b>	<b>11,453</b>	<b>27.3%</b>	<b>30,547</b>
76780 DEPRECIATION	9,837	-	0.0%	9,837
<b>TOTAL OTHER</b>	<b>9,837</b>	<b>-</b>	<b>0.0%</b>	<b>9,837</b>
<b>TOTAL 911 DIVISION</b>	<b>7,369,635</b>	<b>4,078,253</b>	<b>55.3%</b>	<b>3,291,383</b>

**YTD BUDGET REPORT**  
**BOARD OF FIRE & POLICE COMMISSIONERS**

			58.3%	
ACCOUNT	2025 BUDGET	7/31/2025 EXPENDITURES	PERCENT EXPENDED	AVAILABLE BUDGET
71113 SALARIES TEMPORARY	40,000	46,903	117.3%	(6,903)
71251 IMRF	6,581	3,588	54.5%	2,993
71253 UNEMPLOYMENT	106	55	52.1%	51
71262 WORKMEN'S COMPENSATION	112	3,185	2843.5%	(3,073)
<b>TOTAL PERSONNEL</b>	<b>46,799</b>	<b>53,731</b>	<b>114.8%</b>	<b>(6,932)</b>
72211 PRINTING & PUBLICATION	1,000	-	0.0%	1,000
72215 DUES	375	-	0.0%	375
72217 ADVERTISING	20,000	230	1.2%	19,770
72218 SERVICE CONTRACTS	5,200	50,433	969.9%	(45,233)
72219 OTHER CONTRACTUAL	10,500	5,250	50.0%	5,250
72272 RENTAL BUILDING	100	58	58.3%	42
72281 PROF FEE LEGAL	1,000	-	0.0%	1,000
72284 PROF FEE MEDICAL	14,900	-	0.0%	14,900
72290 EDUCATION AND TRAINING	2,500	-	0.0%	2,500
72292 CONSULTING FEE	208,839	21,540	10.3%	187,299
72299 MISCELLANEOUS CONTRACTUAL	2,500	-	0.0%	2,500
<b>TOTAL CONTRACTUAL</b>	<b>266,914</b>	<b>77,512</b>	<b>29.0%</b>	<b>189,402</b>
75520 SMALL EQUIPMENT AND TOOLS	300	-	0.0%	300
75525 FOOD	-	167	100.0%	(167)
75560 OFFICE GENERAL SUPPLIES	200	-	0.0%	200
<b>TOTAL SUPPLIES</b>	<b>500</b>	<b>167</b>	<b>33.3%</b>	<b>33</b>
<b>TOTAL BFPC</b>	<b>314,213</b>	<b>131,409</b>	<b>41.8%</b>	<b>182,504</b>

**YTD BUDGET REPORT**  
**COMMUNITY DEVELOPMENT ADMINISTRATION**

	2025	7/31/2025	58.3%	
ACCOUNT	BUDGET	EXPENSES	PERCENT USED	AVAILABLE BUDGET
71112 SALARIES PERMANENT	207,362	119,630	57.7%	87,732
71251 IMRF	28,264	16,720	59.2%	11,544
71253 UNEMPLOYMENT	91	68	74.3%	23
71262 WORKMEN'S COMPENSATION	1,530	1,704	111.4%	(174)
71263 HEALTH INSURANCE	38,610	24,281	62.9%	14,329
71264 LIFE INSURANCE	187	67	35.9%	120
71271 PARKING BENEFITS	1,218	711	58.3%	508
<b>TOTAL PERSONNEL</b>	<b>277,262</b>	<b>163,180</b>	<b>58.9%</b>	<b>114,082</b>
72203 WIRELESS	1,428	462	32.4%	966
72204 TELEPHONE-VOIP	830	484	58.3%	346
72211 PRINTING & PUBLICATION	2,057	196	9.5%	1,861
72212 POSTAGE	30	4	12.1%	26
72214 TRAVEL	2,550	664	26.0%	1,886
72215 DUES	2,500	1,065	42.6%	1,435
72216 SUBSCRIPTIONS	8,600	1,440	16.7%	7,160
72218 SERVICE CONTRACTS	4,660	3,909	83.9%	751
72263 MICROCOMPUTER	32,110	18,731	58.3%	13,379
72264 VEHICLE REPAIRS	3,030	4,706	155.3%	(1,676)
72265 FUEL	1,650	2,112	128.0%	(462)
72266 VEHICLE VENDOR SERVICE	8,000	-	0.0%	8,000
72267 RISK MANAGEMENT	1,137	663	58.3%	474
72271 RENTAL EQUIPMENT	306	62	20.3%	244
72272 RENTAL BUILDING	8,380	4,888	58.3%	3,492
72290 EDUCATION AND TRAINING	5,100	125	2.5%	4,975
72299 MISCELLANEOUS CONTRACTUAL	20,000	-	0.0%	20,000
<b>TOTAL CONTRACTUAL</b>	<b>102,368</b>	<b>39,512</b>	<b>38.6%</b>	<b>62,856</b>
75509 BOOKS	50	-	0.0%	50
75520 SMALL EQUIPMENT AND TOOLS	612	-	0.0%	612
75525 FOOD	4,000	13	0.3%	3,987
75560 OFFICE GENERAL SUPPLIES	1,520	172	11.3%	1,348
75565 PUBLIC RELATIONS	5,000	465	9.3%	4,535
75570 COMPUTER NONCAPITAL	2,000	-	0.0%	2,000
75592 EQUIP & FURNITURE NONCAPITAL	820	4,085	498.1%	(3,265)
75599 MISCELLANEOUS SUPPLIES	4,000	-	0.0%	4,000
<b>TOTAL SUPPLIES</b>	<b>18,002</b>	<b>4,735</b>	<b>26.3%</b>	<b>12,605</b>
76709 LOANS AND GRANTS	-	22,150	100.0%	(22,150)
<b>TOTAL OTHER</b>	<b>-</b>	<b>22,150</b>	<b>100.0%</b>	<b>(22,150)</b>
79901 LAND ACQUISITION	-	1,000	100.0%	(1,000)
<b>TOTAL CAPITAL</b>	<b>-</b>	<b>1,000</b>	<b>100.0%</b>	<b>(1,000)</b>
<b>TOTAL CD ADMIN</b>	<b>397,632</b>	<b>230,578</b>	<b>58.0%</b>	<b>166,392</b>

**YTD BUDGET REPORT**  
**CONSTRUCTION AND DEVELOPMENT SERVICES DIVISION**

	2025	7/31/2025	58.3% PERCENT USED	AVAILABLE BUDGET
ACCOUNT	BUDGET	EXPENDED		
71112 SALARIES PERMANENT	1,641,290	856,357	52.2%	784,933
71113 SALARIES TEMPORARY	30,000	31,395	104.6%	(1,395)
71122 SALARIES OVERTIME PERM	19,100	31,926	167.2%	(12,826)
71180 EMPLOYEE AGENCY WAGES	-	52,623	100.0%	(52,623)
71251 IMRF	224,081	127,375	56.8%	96,706
71253 UNEMPLOYMENT	1,980	661	33.4%	1,319
71262 WORKMEN'S COMPENSATION	42,418	26,175	61.7%	16,243
71263 HEALTH INSURANCE	392,509	186,725	47.6%	205,784
71264 LIFE INSURANCE	2,555	596	23.3%	1,959
71271 PARKING BENEFITS	14,790	8,627	58.3%	6,163
71292 CELL PHONE ALLOWANCE	-	238	100.0%	(238)
<b>TOTAL PERSONNEL</b>	<b>2,368,723</b>	<b>1,322,699</b>	<b>55.8%</b>	<b>1,046,262</b>
72203 WIRELESS	18,258	9,618	52.7%	8,640
72204 TELEPHONE-VOIP	21,170	12,349	58.3%	8,821
72211 PRINTING & PUBLICATION	7,494	480	6.4%	7,014
72212 POSTAGE	6,120	2,254	36.8%	3,866
72214 TRAVEL	11,550	5,668	49.1%	5,882
72215 DUES	5,565	1,697	30.5%	3,868
72216 SUBSCRIPTIONS	4,320	1,393	32.2%	2,927
72218 SERVICE CONTRACTS	697,750	207,416	29.7%	490,334
72260 CLEANUPS	255,000	93,650	36.7%	161,350
72261 DEMOLITION	372,533	258,819	69.5%	113,714
72263 MICROCOMPUTER	338,710	197,581	58.3%	141,129
72264 VEHICLE REPAIRS	42,690	20,909	49.0%	21,781
72265 FUEL	20,420	9,942	48.7%	10,478
72267 RISK MANAGEMENT	38,583	22,507	58.3%	16,076
72271 RENTAL EQUIPMENT	4,794	1,383	28.8%	3,411
72272 RENTAL BUILDING	151,600	88,433	58.3%	63,167
72274 RENTAL CAR CENTRAL GARAGE	7,217	3,721	51.6%	3,496
72281 PROF FEE LEGAL	40,000	16,853	42.1%	23,147
72282 PROF FEE AUDITING	-	-	100.0%	-
72290 EDUCATION AND TRAINING	20,210	7,626	37.7%	12,584
72292 CONSULTING FEE	15,000	1,400	9.3%	13,600
72297 COLLECTION	11,270,800	6,626,980	58.8%	4,643,820
<b>TOTAL CONTRACTUAL</b>	<b>13,349,784</b>	<b>7,590,678</b>	<b>56.9%</b>	<b>5,759,106</b>
75509 BOOKS	2,000	-	0.0%	2,000
75520 SMALL EQUIPMENT AND TOOLS	4,867	1,828	37.6%	3,039
75524 CLOTHING	6,000	1,642	27.4%	4,358
75525 FOOD	1,500	218	14.5%	1,282

**YTD BUDGET REPORT**  
**CONSTRUCTION AND DEVELOPMENT SERVICES DIVISION**

ACCOUNT	2025	7/31/2025	58.3%	AVAILABLE
	BUDGET	EXPENDED	PERCENT USED	BUDGET
75546 MAINT-JANITORIAL & CLNG	350	204	58.3%	146
75560 OFFICE GENERAL SUPPLIES	7,140	3,489	48.9%	3,651
75570 COMPUTER NONCAPITAL	15,372	101	0.7%	15,271
75592 EQUIP & FURNITURE NONCAPITAL	4,050	1,951	48.2%	2,099
<b>TOTAL SUPPLIES</b>	<b>41,279</b>	<b>9,433</b>	<b>22.9%</b>	<b>29,746</b>
76602 COMMERCIAL ACQUISITION	-	1,045	100.0%	(1,045)
76709 LOANS AND GRANTS	-	7,440	100.0%	(7,440)
76730 BILL ASSISTANCE	30,000	11,260	37.5%	18,740
76760 PROPERTY TAXES	6,300	-	0.0%	6,300
77762 TRANF TO CAPITAL LEASE FUND	33,929	19,792	58.3%	14,137
<b>TOTAL OTHER</b>	<b>70,229</b>	<b>39,536</b>	<b>56.3%</b>	<b>30,693</b>
79922 VEHICLE & OPERATING EQUIP	-	60,267	100.0%	(60,267)
<b>TOTAL CAPITAL</b>	<b>-</b>	<b>60,267</b>	<b>100.0%</b>	<b>(60,267)</b>
<b>TOTAL CONST &amp; DEV SERVICES</b>	<b>15,830,015</b>	<b>9,022,614</b>	<b>57.0%</b>	<b>6,805,540</b>

**YTD BUDGET REPORT  
PLANNING DIVISION**

			58.3%	
ACCOUNT	2025 BUDGET	7/31/2025 EXPENSES	PERCENT USED	AVAILABLE BUDGET
71112 SALARIES PERMANENT	904,984	364,349	40.3%	540,635
71122 SALARIES OVERTIME	-	1,054	100.0%	(1,054)
71251 IMRF	123,357	51,039	41.4%	72,318
71253 UNEMPLOYMENT	565	216	38.3%	349
71262 WORKMEN'S COMPENSATION	9,701	4,339	44.7%	5,362
71263 HEALTH INSURANCE	215,242	83,390	38.7%	131,852
71264 LIFE INSURANCE	1,107	218	19.7%	889
71271 PARKING BENEFITS	7,523	4,388	58.3%	3,135
<b>TOTAL PERSONNEL</b>	<b>1,262,479</b>	<b>508,995</b>	<b>40.3%</b>	<b>753,484</b>
72203 WIRELESS	2,632	1,466	55.7%	1,166
72204 TELEPHONE-VOIP	1,660	968	58.3%	692
72211 PRINTING & PUBLICATION	4,060	6,902	170.0%	(2,842)
72212 POSTAGE	608	301	49.5%	307
72214 TRAVEL	2,100	745	35.5%	1,355
72215 DUES	3,750	2,950	78.7%	800
72216 SUBSCRIPTIONS	50	-	0.0%	50
72217 ADVERTISING	3,500	-	0.0%	3,500
72218 SERVICE CONTRACTS	245,500	71,587	29.2%	173,913
72219 OTHER SERVICE CONTRACTS	2,100	675	32.1%	1,425
72263 MICROCOMPUTER	83,340	48,615	58.3%	34,725
72264 VEHICLE REPAIRS	1,980	1,453	73.4%	527
72265 FUEL	310	-	0.0%	310
72267 RISK MANAGEMENT	3,329	1,942	58.3%	1,387
72271 RENTAL EQUIPMENT	2,060	1,053	51.1%	1,007
72272 RENTAL BUILDING	8,380	4,888	58.3%	3,492
72281 PROF FEE LEGAL	500	-	0.0%	500
72290 EDUCATION & TRAINING	4,580	1,218	26.6%	3,362
<b>TOTAL CONTRACTUAL</b>	<b>370,439</b>	<b>144,762</b>	<b>39.1%</b>	<b>225,677</b>
75520 SMALL EQUIPMENT AND TOOLS	200	-	0.0%	200
75525 FOOD	400	88	21.9%	312
75546 MAINT-JANITORIAL & CLNG	50	-	0.0%	50
75560 OFFICE GENERAL SUPPLIES	1,065	220	20.7%	845
75570 COMPUTER NON-CAPITAL	3,020	-	0.0%	3,020
75592 EQUIP & FURNITURE NONCAPITAL	250	132	52.7%	118
<b>TOTAL SUPPLIES</b>	<b>4,985</b>	<b>440</b>	<b>8.8%</b>	<b>4,545</b>
76709 LOANS AND GRANTS	-	400,000	100.0%	(400,000)
<b>TOTAL OTHER</b>	<b>-</b>	<b>400,000</b>	<b>100.0%</b>	<b>(400,000)</b>
<b>TOTAL PLANNING</b>	<b>1,637,903</b>	<b>1,054,196</b>	<b>64.4%</b>	<b>583,707</b>



**YTD BUDGET REPORT  
PW ADMINISTRATION**

ACCOUNTS	2025 BUDGET	7/31/2025 EXPENDED	58.3% PERCENT USED	AVAILABLE BUDGET
71112 SALARIES PERMANENT	771,863	437,280	56.7%	334,583
71122 SALARIES OVERTIME PERM	5,000	2,805	56.1%	2,195
71181 AFSCME WELLNESS BONUS	-	153	100.0%	(153)
71251 IMRF	105,208	61,563	58.5%	43,645
71253 UNEMPLOYMENT	477	244	51.1%	233
71262 WORKMEN'S COMPENSATION	2,128	2,684	126.1%	(556)
71263 HEALTH INSURANCE	147,979	79,474	53.7%	68,505
71264 LIFE INSURANCE	990	212	21.4%	778
71271 PARKING BENEFITS	1,432	835	58.3%	597
<b>TOTAL PERSONNEL</b>	<b>1,035,077</b>	<b>585,250</b>	<b>56.5%</b>	<b>449,827</b>
72203 WIRELESS SERVICE	4,000	1,491	37.3%	2,509
72204 TELEPHONE-VOIP	2,080	1,213	58.3%	867
72211 PRINTING & PUBLICATION	400	-	0.0%	400
72212 POSTAGE	50	-	0.0%	50
72215 DUES	700	-	0.0%	700
72216 SUBSCRIPTIONS	900	1,390	154.4%	(490)
72218 SERVICE CONTRACTS	-	5,126	100.0%	(5,126)
72252 MAINT-EQUIPMENT	8,000	1,292	16.1%	6,708
72263 MICROCOMPUTER	58,310	34,014	58.3%	24,296
72264 VEHICLE REPAIRS	15,460	7,036	45.5%	8,424
72265 FUEL	3,580	1,048	29.3%	2,532
72267 RISK MANAGEMENT	3,047	1,777	58.3%	1,270
72271 RENTAL EQUIPMENT	2,850	985	34.5%	1,865
72272 RENTAL BUILDING	46,840	27,323	58.3%	19,517
72288 PROF FEES - MISC	5,000	8,675	173.5%	(3,675)
72290 EDUCATION AND TRAINING	5,500	1,490	27.1%	4,010
<b>TOTAL CONTRACTUAL</b>	<b>156,717</b>	<b>92,859</b>	<b>59.3%</b>	<b>63,858</b>
75501 PUBLIC WORKS	10,000	7,790	77.9%	2,210
75520 SMALL EQUIPMENT AND TOOLS	25,000	15,686	62.7%	9,314
75524 CLOTHING	2,100	2,569	122.3%	(469)
75525 FOOD	2,000	269	13.5%	1,731
75526 FUEL AND LUBRICANTS	-	829	100.0%	(829)
75527 LINENS AND LAUNDRY	1,000	582	58.2%	418
75543 MAINT-EQUIPMENT	-	231	100.0%	(231)
75560 OFFICE GENERAL SUPPLIES	4,300	854	19.9%	3,446
75561 PHOTOGRAPHY & REPRODUCTN	500	-	0.0%	500
75565 PUBLIC RELATIONS	3,500	422	12.1%	3,078
75570 COMPUTER NONCAPITAL	4,000	2,526	63.1%	1,474
75592 FURNITURE AND EQUIPMENT NONCAPITAL	900	349	38.8%	551
<b>TOTAL SUPPLY</b>	<b>53,300</b>	<b>32,107</b>	<b>60.2%</b>	<b>21,193</b>
77762 TRANS TO CAPITAL LEASE FUND	6,402	3,735	58.3%	2,668
<b>TOTAL OTHER</b>	<b>6,402</b>	<b>3,735</b>	<b>58.3%</b>	<b>2,668</b>
<b>TOTAL PW ADMIN</b>	<b>1,251,496</b>	<b>713,951</b>	<b>57.0%</b>	<b>537,545</b>

**YTD BUDGET REPORT  
ENGINEERING DIVISION**

	2025	7/31/2025	58.3% PERCENT USED	AVAILABLE BUDGET
	BUDGET	EXPENDED		
71112 SALARIES PERMANENT	1,258,404	592,003	47.0%	666,401
71113 SALARIES TEMPORARY	6,000	53,528	892.1%	(47,528)
71122 SALARIES OVERTIME PERM	-	12	100.0%	(12)
71251 IMRF	171,526	103,152	60.1%	68,374
71253 UNEMPLOYMENT	780	441	56.6%	339
71262 WORKMEN'S COMPENSATION	18,823	10,974	58.3%	7,849
71263 HEALTH INSURANCE	241,863	117,087	48.4%	124,776
71264 LIFE INSURANCE	1,612	386	23.9%	1,226
71271 PARKING BENEFITS	10,491	6,120	58.3%	4,371
<b>TOTAL PERSONNEL</b>	<b>1,709,499</b>	<b>883,704</b>	<b>51.7%</b>	<b>825,795</b>
72203 WIRELESS SERVICE	9,800	5,371	54.8%	4,429
72204 TELEPHONE-VOIP	4,980	2,905	58.3%	2,075
72211 PRINTING & PUBLICATION	3,550	1,250	35.2%	2,300
72212 POSTAGE	100	-	0.0%	100
72214 TRAVEL	400	4,020	1005.0%	(3,620)
72215 DUES	2,218	2,735	123.3%	(517)
72216 SUBSCRIPTIONS	200	58	29.0%	142
72218 SERVICE CONTRACTS	13,000	4,226	32.5%	8,774
72231 UTILITIES-BLDG & OFF	500	5,008	1001.6%	(4,508)
72252 MAINT-EQUIPMENT	1,950	1,015	52.1%	935
72263 MICROCOMPUTER	159,210	92,873	58.3%	66,338
72264 VEHICLE REPAIRS	8,490	2,173	25.6%	6,317
72265 FUEL	3,710	1,285	34.6%	2,425
72267 RISK MANAGEMENT	12,127	7,074	58.3%	5,053
72271 RENTAL EQUIPMENT	6,000	3,438	57.3%	2,562
72272 RENTAL BUILDING	52,530	30,643	58.3%	21,888
72273 RENTAL LAND	-	1,460	100.0%	(1,460)
72274 RENTAL CAR CENTRAL GARAGE	-	2,621	100.0%	(2,621)
72290 EDUCATION AND TRAINING	25,000	3,998	16.0%	21,002
<b>TOTAL CONTRACTUAL</b>	<b>303,765</b>	<b>172,152</b>	<b>56.7%</b>	<b>131,613</b>
75501 PUBLIC WORKS	500	720	144.0%	(220)
75502 WATER SUPPLIES & MATERIAL	-	115	100.0%	(115)
75520 SMALL EQUIPMENT AND TOOLS	14,400	3,168	22.0%	11,232
75524 CLOTHING	1,300	126	9.7%	1,174
75525 FOOD	2,100	-	0.0%	2,100
75560 OFFICE GENERAL SUPPLIES	1,500	1,203	80.2%	297
75570 COMPUTER NONCAPITAL	45,000	2,736	27.4%	7,264
75592 EQUIP & FURNITURE NONCAPITAL	10,000	226	0.3%	74,574
<b>TOTAL SUPPLY</b>	<b>74,800</b>	<b>8,294</b>	<b>11.1%</b>	<b>66,506</b>

**YTD BUDGET REPORT**  
**ENGINEERING DIVISION**

	2025	7/31/2025	58.3%	
	BUDGET	EXPENDED	PERCENT USED	AVAILABLE BUDGET
77762 TRANF TO CAPITAL LEASE	24,164	14,096	58.3%	10,068
TOTAL OTHER	24,164	14,096	58.3%	10,068
TOTAL ENGINEERING DIVISION	2,112,228	1,078,246	51.0%	1,033,982

**YTD BUDGET REPORT  
STREET DIVISION**

	2025	7/31/2025	58.3% PERCENT USED	AVAILABLE BUDGET
	BUDGET	EXPENDED		
71112 SALARIES PERMANENT	1,989,317	1,298,278	65.3%	691,039
71113 SALARIES TEMPORARY	-	5,502	100.0%	(5,502)
71119 OUT OF CLASS PAY	3,000	651	21.7%	2,349
71122 SALARIES OVERTIME PERM	250,000	79,750	31.9%	170,250
71180 EMPLOYEE AGENCY WAGES	50,000	9,349	18.7%	40,651
71181 AFSCME WELLNES BONUS	1,000	505	50.5%	495
71251 IMRF	265,661	194,069	73.1%	71,592
71253 UNEMPLOYMENT	1,696	1,088	64.1%	608
71262 WORKMEN'S COMPENSATION	105,950	87,331	82.4%	18,619
71263 HEALTH INSURANCE	613,353	367,729	60.0%	245,624
71264 LIFE INSURANCE	3,520	1,088	30.9%	2,432
<b>TOTAL PERSONNEL</b>	<b>1,294,180</b>	<b>2,045,340</b>	<b>158.0%</b>	<b>(751,160)</b>
72203 WIRELESS SERVICE	11,000	3,803	34.6%	7,197
72204 TELEPHONE-VOIP	4,980	2,905	58.3%	2,075
72214 TRAVEL	390	111	28.5%	279
72215 DUES	2,800	1,005	35.9%	1,795
72217 ADVERTISING	100	-	0.0%	100
72218 SERVICE CONTRACTS	3,422,000	1,598,360	46.7%	1,823,640
72231 UTILITIES-BLDG & OFF	30,000	8,063	26.9%	21,937
72263 MICROCOMPUTER	83,710	48,831	58.3%	34,879
72264 VEHICLE REPAIRS	1,079,900	430,360	39.9%	649,540
72265 FUEL	189,790	91,711	48.3%	98,079
72267 RISK MANAGEMENT	347,885	202,933	58.3%	144,952
72271 RENTAL EQUIPMENT	14,200	8,209	57.8%	5,991
72272 RENTAL BUILDING	600,130	350,076	58.3%	250,054
72290 EDUCATION AND TRAINING	5,000	629	12.6%	4,371
<b>TOTAL CONTRACTUAL</b>	<b>5,791,985</b>	<b>2,748,232</b>	<b>47.4%</b>	<b>3,043,753</b>
75501 PUBLIC WORKS	1,966,000	1,096,414	55.8%	869,586
75520 SMALL EQUIPMENT AND TOOLS	18,400	9,424	51.2%	8,976
75521 MEDICINE AND DRUGS	500	-	0.0%	500
75524 CLOTHING	8,950	5,034	56.2%	3,916
75525 FOOD	3,000	1,225	40.8%	1,775
75526 FUEL AND LUBRICANTS	-	269	100.0%	(269)
75527 LINENS AND LAUNDRY	1,000	-	0.0%	1,000
75560 OFFICE GENERAL SUPPLIES	3,500	1,504	43.0%	1,996
75570 COMPUTER NONCAPITAL	4,000	1,226	30.6%	2,774
<b>TOTAL SUPPLY</b>	<b>2,005,350</b>	<b>1,132,196</b>	<b>56.5%</b>	<b>873,154</b>
76728 WATER TRANSFER	107,570	62,749	58.3%	44,821
77762 TRANS TO CAPITAL LEASE	297,125	173,323	58.3%	123,802
<b>TOTAL OTHER</b>	<b>404,695</b>	<b>236,072</b>	<b>58.3%</b>	<b>168,623</b>
79922 VEHICLE & OPERATING EQUIP	1,735,000	807,711	46.6%	927,289
<b>TOTAL OTHER</b>	<b>1,735,000</b>	<b>807,711</b>	<b>46.6%</b>	<b>927,289</b>
<b>TOTAL STREET DIVISION</b>	<b>11,231,210</b>	<b>6,969,552</b>	<b>62.1%</b>	<b>4,261,658</b>

**YTD BUDGET REPORT  
TRAFFIC DIVISION**

ACCOUNT	2025 BUDGET	7/31/2025 EXPENDED	58.3% PERCENT USED	AVAILABLE BUDGET
71112 SALARIES PERMANENT	821,177	489,106	59.6%	332,071
71119 OUT OF CLASS PAY	500	49	9.9%	451
71122 SALARIES OVERTIME PERM	60,000	12,371	20.6%	47,629
71251 IMRF	111,932	93,854	83.8%	18,078
71253 UNEMPLOYMENT	585	337	57.6%	248
71262 WORKMEN'S COMPENSATION	43,659	26,196	60.0%	17,463
71263 HEALTH INSURANCE	165,530	108,387	65.5%	57,143
71264 LIFE INSURANCE	1,212	307	25.3%	905
71292 CELL PHONE ALLOWANCE	1,040	360	34.6%	680
<b>TOTAL PERSONNEL</b>	<b>1,205,635</b>	<b>730,966</b>	<b>60.6%</b>	<b>474,669</b>
72203 WIRELESS SERVICE	10,700	3,827	35.8%	6,873
72204 TELEPHONE-VOIP	4,980	2,905	58.3%	2,075
72211 PRINTING & PUBLICATION	250	-	0.0%	250
72212 POSTAGE	750	54	7.2%	696
72214 TRAVEL	1,500	1,136	75.8%	364
72215 DUES	900	340	37.8%	560
72216 SUBSCRIPTIONS	3,750	-	0.0%	3,750
72217 ADVERTISING	250	-	0.0%	250
72218 SERVICE CONTRACTS	124,000	47,379	38.2%	76,621
72232 UTILITIES-STR LIGHT	2,035,000	1,451,509	71.3%	583,491
72252 MAINT-EQUIPMENT	6,000	-	0.0%	6,000
72263 MICROCOMPUTER	84,470	49,274	58.3%	35,196
72264 VEHICLE REPAIRS	96,000	27,814	29.0%	68,186
72265 FUEL	33,600	13,095	39.0%	20,505
72267 RISK MANAGEMENT	120,713	70,416	58.3%	50,297
72271 RENTAL EQUIPMENT	1,950	1,324	67.9%	626
72272 RENTAL BUILDING	195,040	113,773	58.3%	81,267
72274 RENTAL CAR CENTRAL GARAGE	-	7,133	100.0%	(7,133)
72290 EDUCATION AND TRAINING	4,500	1,695	37.7%	2,805
<b>TOTAL CONTRACTUAL</b>	<b>2,724,353</b>	<b>1,791,676</b>	<b>65.8%</b>	<b>932,677</b>
75501 PUBLIC WORKS	775,000	229,490	29.6%	545,510
75520 SMALL EQUIPMENT AND TOOLS	11,000	1,918	17.4%	9,082
75524 CLOTHING	2,700	661	24.5%	2,039
75525 FOOD	-	188	100.0%	(188)
75527 LINENS AND LAUNDRY	500	108	21.6%	392
75543 MAINT-EQUIPMENT	1,000	-	0.0%	1,000
75560 OFFICE GENERAL SUPPLIES	1,500	374	25.0%	1,126
75570 COMPUTER NONCAPITAL	7,000	-	0.0%	7,000
<b>TOTAL SUPPLIES</b>	<b>798,700</b>	<b>232,739</b>	<b>29.1%</b>	<b>565,961</b>
77727 PURCHASE SERVICE TRANF	77,190	45,028	58.3%	32,163

**YTD BUDGET REPORT**  
**TRAFFIC DIVISION**

ACCOUNT	2025	7/31/2025	58.3%	AVAILABLE BUDGET
	BUDGET	EXPENDED	PERCENT USED	
77762 TRANS TO CAPITAL LEASE FUND	68,842	40,158	58.3%	28,684
TOTAL OTHER	146,032	85,185	58.3%	60,847
79922 VEHICLE & OPERATING EQUIP	405,000	-	0.0%	405,000
TOTAL OTHER	405,000	-	0.0%	405,000
TOTAL TRAFFIC DIVISION	5,279,720	2,840,566	53.8%	2,439,154

**YTD BUDGET REPORT  
CIP FUND**

	2025 BUDGET	7/31/2025 EXPENDED	58.3% PERCENT USED	AVAILABLE BUDGET
71112 SALARIES PERMANENT	1,378,516	849,048	61.6%	529,468
71113 SALARIES TEMPORARY	22,000	22,636	102.9%	(636)
71119 OUT OF CLASS PAY	2,000	-	0.0%	2,000
71122 SALARIES OVERTIME PERM	2,000	2,108	105.4%	(108)
71251 IMRF	198,319	123,264	62.2%	75,055
71253 UNEMPLOYMENT	815	484	59.4%	331
71262 WORKMEN'S COMPENSATION	20,760	12,640	60.9%	8,120
71263 HEALTH INSURANCE	428,674	195,436	45.6%	233,238
71264 LIFE INSURANCE	1,634	491	30.1%	1,143
71271 PARKING BENEFITS	10,275	5,994	58.3%	4,281
<b>TOTAL PERSONNEL</b>	<b>2,064,993</b>	<b>1,212,100</b>	<b>58.7%</b>	<b>852,893</b>
72203 WIRELESS SERVICE	17,000	4,665	27.4%	12,335
72204 TELEPHONE-VOIP	4,080	2,380	58.3%	1,700
72211 PRINTING & PUBLICATION	1,500	1,257	83.8%	243
72212 POSTAGE	250	18	7.3%	232
72213 TELEPHONE	1,200	-	0.0%	1,200
72214 TRAVEL	2,000	20	1.0%	1,980
72215 DUES	104,000	70,111	67.4%	33,889
72216 SUBSCRIPTIONS	1,000	1,147	114.7%	(147)
72217 ADVERTISING	250	-	0.0%	250
72218 SERVICE CONTRACTS	500	227,328	45465.5%	(226,828)
72263 MICROCOMPUTER	89,550	52,238	58.3%	37,313
72264 VEHICLE REPAIRS	27,090	7,573	28.0%	19,517
72265 FUEL	13,190	4,781	36.2%	8,409
72267 RISK MANAGEMENT	291,215	169,875	58.3%	121,340
72271 RENTAL EQUIPMENT	2,000	1,377	68.9%	623
72272 RENTAL BUILDING	234,000	136,500	58.3%	97,500
72274 RENTAL CAR CENTRAL GARAGE	-	14,322	100.0%	(14,322)
72281 PROF FEE LEGAL	-	3,018	100.0%	(3,018)
72282 PROF FEE AUDITING	33,660	-	0.0%	33,660
72283 ENGINEERING-DESIGN	-	10,487	100.0%	(10,487)
72290 EDUCATION AND TRAINING	10,000	2,578	25.8%	7,422
72294 PUBLIC RELATIONS	100	-	0.0%	100
72299 MISCELLANEOUS CONTRACTUAL	100	-	0.0%	100
<b>TOTAL CONTRACTUAL</b>	<b>832,685</b>	<b>709,675</b>	<b>85.2%</b>	<b>123,010</b>
75501 PUBLIC WORKS	-	45,251	100.0%	(45,251)
75502 WATER SUPPLIES & MATERIAL	-	220	100.0%	(220)
75509 BOOKS	2,000	-	0.0%	2,000
75520 SMALL EQUIPMENT AND TOOLS	21,500	18,865	87.7%	2,635
75524 CLOTHING	500	-	0.0%	500
75525 FOOD	200	-	0.0%	200

**YTD BUDGET REPORT  
CIP FUND**

	2025 BUDGET	7/31/2025 EXPENDED	58.3% PERCENT USED	AVAILABLE BUDGET
75560 OFFICE GENERAL SUPPLIES	-	24	100.0%	(24)
75561 PHOTOGRAPHY & REPRODUCTION	1,500	-	0.0%	1,500
75570 COMPUTER NONCAPITAL	90,200	20,000	22.2%	70,200
75938 MAINT-INFRASTRUCTURE-NON CAP	-	1,552,748	100.0%	(1,552,748)
<b>TOTAL SUPPLIES</b>	<b>115,900</b>	<b>1,637,108</b>	<b>1412.5%</b>	<b>(1,521,208)</b>
76760 PROPERTY TAXES	-	4,650	100%	(4,650)
76790 MISCELLANEOUS	-	1,700	100%	(1,700)
76794 SALES TAX REBATE	180,000	-	0.0%	180,000
76796 STATE ADMIN FEE/IDOR COLLECTION	250,000	204,681	81.9%	45,319
77719 TRANSFER TO GENERAL FUND	-	799,589	100%	(799,589)
77725 PURCH SERVICE-GENERAL FD	637,210	371,706	58.3%	265,504
<b>TOTAL OTHER</b>	<b>1,067,210</b>	<b>1,382,326</b>	<b>129.5%</b>	<b>(315,116)</b>
79901 LAND ACQUISITION	-	24,364	100.0%	(24,364)
79902 LAND IMPROVEMENT	-	286,011	100.0%	(286,011)
79918 WATER IN-HOUSE CIP	-	909,748	100.0%	(909,748)
79938 CONSTRUCTION PROJECT	66,852,767	5,594,652	8.4%	61,258,115
79940 ENG SERVICES-DESIGN	-	1,779,420	100.0%	(1,779,420)
79941 ENG SERVICES-CONSTRUCTION	-	418,985	100.0%	(418,985)
<b>TOTAL CAPITAL</b>	<b>66,852,767</b>	<b>9,013,178</b>	<b>13.5%</b>	<b>57,839,589</b>
<b>TOTAL CIP FUND</b>	<b>70,933,555</b>	<b>13,954,388</b>	<b>19.7%</b>	<b>56,979,167</b>



MERCHANT	AMOUNT	EMPLOYEE	DEPARTMENT	FUND	TRAINING	DATES	LOCATION
NCRC ORG* 2025 JUST EC	75.00	SARAH LEYS	CD ADMIN	GENERAL FUND	NCRC CONFERENCE REGISTRATION	03/24/25 - 03/27/25	WASHINGTON, DC
HILTON WASHINGTON DC NATI	1,166.16	ANDREA HINRICHS	CDBG	CDBG	HOTEL FOR NCDA WINTER CONFERENCE	02/05/25 - 02/07/25	WASHINGTON, DC
KATIES CUP	156.00	CD STAFF	CDBG	CDBG	MEETING ROOM RENTAL FOR CAPER PUBLIC HEARING	01/20/25	ROCKFORD, IL
ILLINOIS PLUMBING HEATING	35.00	THOMAS EARLYWINE	CONST SERV	GENERAL FUND	IPHCC TRAINING	03/21/25	OAKBROOK, IL
INTL CODE COUNCIL INC	41.80	NELSON SJOSTROM	CONST SERV	GENERAL FUND	ICC BASIC CODE ENFORCEMENT PDF DOWNLOAD	01/14/25	ROCKFORD, IL
INTL CODE COUNCIL INC	2,016.11	NELSON SJOSTROM	CONST SERV	GENERAL FUND	ICC 2021 COMMENTARY COLLECTION SOFT COVER AND PDF VERSION	01/14/25	ROCKFORD, IL
BUILDING AND FIRE CODE	195.00	CURT RUTHE	CONST SERV	GENERAL FUND	ICC SEMINAR UNDERSTANDING 2021 INTERNANTIONAL RESIDENTIAL CODE-PLUMBING	2/7/2025	ELGIN, IL
BUILDING AND FIRE CODE	380.00	CURT RUTHE	CONST SERV	GENERAL FUND	ICC SEMINAR UNDERSTANDING 2021 INTERNANTIONAL RESIDENTIAL CODE-ELECTRICAL	02/10/25 - 02/11/25	ELGIN, IL
INTL CODE COUNCIL INC	23.00	CHRISTINA HARGROVE	CONST SERV	GENERAL FUND	ICC BUILDING TURBO TABS	01/15/25	ROCKFORD, IL
ALLIANZ TRAVEL INS	18.00	NELSON SJOSTROM	CONST SERV	GENERAL FUND	2025 ICC EDUCODE ICC TRAINING CLASSES ALLEGIANIT FLIGHT INSURANCE	02/23/25 - 02/28/25	LAS VEGAS, NV
ALLIANZ TRAVEL INS	18.00	RUDY MORENO	CONST SERV	GENERAL FUND	2025 ICC EDUCODE ICC TRAINING CLASSES ALLEGIANIT FLIGHT INSURANCE	02/23/25 - 03/02/25	LAS VEGAS, NV
ALLIANZ TRAVEL INS	21.00	RUDY MORENO	CONST SERV	GENERAL FUND	2025 ICC EDUCODE ICC TRAINING CLASSES ALLEGIANIT FLIGHT INSURANCE	02/23/25 - 03/02/25	LAS VEGAS, NV
EXPEDIA 73020652176854	19.00	NELSON SJOSTROM	CONST SERV	GENERAL FUND	2025 ICC EDUCODE ICC TRAINING CLASSES AMERICAN AIRLINES FLIGHT PROTEC	02/23/25 - 02/28/25	LAS VEGAS, NV
ALLEGNT AIR 2TE	175.00	NELSON SJOSTROM	CONST SERV	GENERAL FUND	2025 ICC EDUCODE ICC TRAINING CLASSES ALLEGIANIT FLIGHT	02/23/25 - 02/28/25	LAS VEGAS, NV
ALLEGNT AIR 2TE	175.00	RUDY MORENO	CONST SERV	GENERAL FUND	2025 ICC EDUCODE ICC TRAINING CLASSES ALLEGIANIT FLIGHT	02/23/25 - 03/02/25	LAS VEGAS, NV
ALLEGNT AIR 2VY	255.00	RUDY MORENO	CONST SERV	GENERAL FUND	2025 ICC EDUCODE ICC TRAINING CLASSES ALLEGIANIT FLIGHT	02/23/25 - 03/02/25	LAS VEGAS, NV
AMERICAN AIR0017220409000	194.48	NELSON SJOSTROM	CONST SERV	GENERAL FUND	2025 ICC EDUCODE ICC TRAINING CLASSES AMERICAN AIRLINES FLIGHT	02/23/25 - 02/28/25	LAS VEGAS, NV
ALLEGNT AIR 2VY	182.00	RUDY MORENO	CONST SERV	GENERAL FUND	2025 ICC EDUCODE ICC TRAINING CLASSES ALLEGIANIT FLIGHT	02/23/25 - 03/02/25	LAS VEGAS, NV
UNITED 0162451305310	514.96	MARTY BLOOM	ENGINEERING	GENERAL FUND	AIRFARE FOR MUNICIPAL SPECIAL EVENTS ASSOCIATION TRAINING	02/17/25 - 2/19/25	SAVANNAH, GA
UNITED 0162451305311	514.96	KELLY NOKES	ENGINEERING	GENERAL FUND	AIRFARE FOR MUNICIPAL SPECIAL EVENTS ASSOCIATION TRAINING	02/17/25 - 2/19/25	SAVANNAH, GA
UNITED 0164464876870	29.99	KELLY NOKES	ENGINEERING	GENERAL FUND	AIRFARE FOR MUNICIPAL SPECIAL EVENTS ASSOCIATION TRAINING	02/17/25 - 2/19/25	SAVANNAH, GA
UNITED 0164464876871	66.99	MARTY BLOOM	ENGINEERING	GENERAL FUND	AIRFARE FOR MUNICIPAL SPECIAL EVENTS ASSOCIATION TRAINING	02/17/25 - 2/19/25	SAVANNAH, GA
UNITED 0164464877985	35.00	KELLY NOKES	ENGINEERING	GENERAL FUND	AIRFARE FOR MUNICIPAL SPECIAL EVENTS ASSOCIATION TRAINING	02/17/25 - 2/19/25	SAVANNAH, GA
UNITED 0164464877986	35.00	MARTY BLOOM	ENGINEERING	GENERAL FUND	AIRFARE FOR MUNICIPAL SPECIAL EVENTS ASSOCIATION TRAINING	02/17/25 - 2/19/25	SAVANNAH, GA
IAFSM	480.00	JEREMY MITCHELL	ENGINEERING	GENERAL FUND	IAFSM ANNUAL CONFERENCE	03/11/25 - 3/12/25	TINLEY PARK, IL
IAFSM	460.00	BRAD HOLCOMB	ENGINEERING	GENERAL FUND	IAFSM ANNUAL CONFERENCE	03/11/25 - 3/12/25	TINLEY PARK, IL
ALLIANCE FOR HOPE INTERN	50.00	ANDREA CARLSON	FAMILY JUSTICE CENTER	GENERAL FUND	2025 FAMILY JUSTICE CENTER ALLIANCE LEADERSHIP SUMMIT AND CONGRESSIONAL FJC GATHERING	03/04/25 - 03/06/25	SAN DIEGO, CA
CYPHERWORX INC	275.00	FPC VOL. DHARA PATEL	FAMILY JUSTICE CENTER	GENERAL FUND	DOMESTIC VIOLENCE TRAINING	01/10/25	ONLINE
BUILDING AND FIRE CODE	990.00	MICHAEL SCHNAPER	FIRE	GENERAL FUND	FIRE AND LIFE SAFETY PLAN REVIEW	01/21,23,28,30/25 & 02/04,06/25	ELGIN, IL
INTL CODE COUNCIL INC	198.00	MICHAEL SCHNAPER	FIRE	GENERAL FUND	RENEWABLE ENERGY SYSTEMS-REQUIREMENTS FOR PV, ESS & TURBINES	01/10/25	ONLINE
INTL CODE COUNCIL INC	70.00	MICHAEL SCHNAPER	FIRE	GENERAL FUND	FIRE WATER SYSTEMS-STORAGE, PUMPING & DISTRIBUTION	01/10/25	ONLINE
CENTER FOR PUBLIC SAFETY	720.00	MATTHEW RENFRO	FIRE	GENERAL FUND	CPSE-EXCELLENCE CONFERENCE	04/01/25 - 04/04/25	ORLANDO, FL
CENTER FOR PUBLIC SAFETY	650.00	MATT CORDONNIER	FIRE	GENERAL FUND	CPSE-QUALITY IMPROVEMENT FOR FIRE AND EMS	03/04/25 - 03/06/25	ROCKFORD, IL
AMERICAN AIR0012210379555	794.97	MATT CORDONNIER	FIRE	GENERAL FUND	FLIGHT TO CPSE EXCELLENCE CONFERENCE	03/31/25 - 04/04/25	ORLANDO, FL
AMERICAN AIR0012210379557	794.97	REBECCA TYO	FIRE	GENERAL FUND	FLIGHT TO CPSE EXCELLENCE CONFERENCE	03/31/25 - 04/04/25	ORLANDO, FL
AMERICAN AIR0012210379559	794.97	MATTHEW RENFRO	FIRE	GENERAL FUND	FLIGHT TO CPSE EXCELLENCE CONFERENCE	03/31/25 - 04/04/25	ORLANDO, FL
AMERICAN AIR0012210379558	794.97	TREYOR HOGAN	FIRE	GENERAL FUND	FLIGHT TO CPSE EXCELLENCE CONFERENCE	03/31/25 - 04/04/25	ORLANDO, FL
AMERICAN AIR0012210379556	794.97	JESSICA BODELL	FIRE	GENERAL FUND	FLIGHT TO CPSE EXCELLENCE CONFERENCE	03/31/25 - 04/04/25	ORLANDO, FL
CENTER FOR PUBLIC SAFETY	650.00	DISTRICT CHIEF BRIAN CARLSON	FIRE	GENERAL FUND	CPSE QUALITY IMPROVEMENT WORKSHOP FOR FIRE EMS	03/04/25 - 03/06/25	ROCKFORD, IL
CENTER FOR PUBLIC SAFETY	650.00	DATA ANALYST JESSICA BODELL	FIRE	GENERAL FUND	CPSE QUALITY IMPROVEMENT WORKSHOP FOR FIRE EMS	03/04/25 - 03/06/25	ROCKFORD, IL
PRICELN*VACATION PKG	1,515.99	RYAN BANEY	FIRE	GENERAL FUND	NAMIHP CONFERENCE FLIGHT	02/15/25 - 02/18/25	TAMPA BAY, FL
PSI EXAMS	175.00	ROBERT SEARLES	FIRE	GENERAL FUND	EXAM FEE FOR ROBERT SEARLES	01/29/25	ROCKFORD, IL
NAMIHP	494.00	RYAN BANEY	FIRE	GENERAL FUND	NAMIHP CONFERENCE	02/15/25 - 02/18/25	TAMPA BAY, FL
AMERICAN AIR0017220262918	435.97	RYAN BANEY	FIRE	GENERAL FUND	NAMIHP CONFERENCE HOTEL ROOM	02/15/25 - 02/18/25	TAMPA BAY, FL
CENTER FOR PUBLIC SAFETY	720.00	JESSICA BODELL	FIRE	GENERAL FUND	REGISTRATION FEE-CPSE CONFERENCE	04/01/25 - 04/04/25	ORLANDO, FL
SPRINGHILL SUITES CHAR	931.11	SHURICE HUNTER	HR	GENERAL FUND	HOTEL FOR 2025 NATIONAL PELRA CERT WEEK	01/11/25 - 01/19/25	CHARLOTTE, NC
PELRA* INV-15975	175.00	SHURICE HUNTER	HR	GENERAL FUND	CLRP EXAM FOR NATIONAL PELRA 01/15/2025	01/15/25	CHARLOTTE, NC
SPRINGHILL SUITES CHAR	696.89	SHURICE HUNTER	HR	GENERAL FUND	HOTEL FOR 2025 NATIONAL PELRA CERT WEEK	01/11/25 - 01/19/25	CHARLOTTE, NC
2025MLKSCOLARSHIPBRE	59.08	ANQUINETTE PARHAM	HUMAN SERVICES	HUMAN SERVICES	TICKET FOR ANQUINETTE PARHAM - MLK SCHOLARSHIP ORATORICAL CONTEST BREAKFAST	01/08/25	ROCKFORD, IL
LOVING GUIDANCE LLC	739.26	ALL HS AND EHS STAFF	HUMAN SERVICES	HUMAN SERVICES	TEAM REGISTRATION POWER OF RESILIENCE - CONSCIOUS DISCIPLINE	01/07/24 - 01/07/26	ONLINE
LOVING GUIDANCE LLC	259.74	ALL HS AND EHS STAFF	HUMAN SERVICES	HUMAN SERVICES	TEAM REGISTRATION POWER OF RESILIENCE - CONSCIOUS DISCIPLINE	01/07/24 - 01/07/26	ONLINE
NATIONAL HEAD START ASSO	50.00	AMY MORRIS	HUMAN SERVICES	HUMAN SERVICES	REGISTRATION KINDERMUSIC MUSIC RITUALS-VIRTUAL-FHS2501007EHS	01/21/25	ONLINE
NATIONAL HEAD START ASSO	50.00	ALEXIS ALFORD	HUMAN SERVICES	HUMAN SERVICES	REGISTRATION KINDERMUSIC MUSIC RITUALS-VIRTUAL-FHS2501007EHS	01/21/25	ONLINE
SA ONLINE HOSPITAL	48.10	RON WEBB	HUMAN SERVICES	HUMAN SERVICES	CPR RENEWAL CLASS FOR RON WEBB-FH2501014HS/EHS	01/29/25	ROCKFORD, IL
SA ONLINE HOSPITAL	16.90	RON WEBB	HUMAN SERVICES	HUMAN SERVICES	CPR RENEWAL CLASS FOR RON WEBB-FH2501014HS/EHS	01/29/25	ROCKFORD, IL
NIU BURSAR OFFICE	605.32	ALL STAFF	HUMAN SERVICES	HUMAN SERVICES	SPACE CONSCIOUS DISCIPLINE TRAINING-FH2411008HS/EHS TTA AT NIU	11/25/25 - 11/26/25	ROCKFORD, IL
NIU BURSAR OFFICE	212.68	ALL STAFF	HUMAN SERVICES	HUMAN SERVICES	SPACE CONSCIOUS DISCIPLINE TRAINING-FH2411008HS/EHS TTA AT NIU	11/25/25 - 11/26/25	ROCKFORD, IL
IL TOLLWAY -PAY BY PLATE	14.10	HS STAFF	HUMAN SERVICES	HUMAN SERVICES	TOOK EHS PARENT TO AN APPOINTMENT IN NORTHBROOK, IL-FH2501020EHS	01/31/25	NORTHBROOK, IL
UNITED 0167190423374	902.96	ANQUINETTE PARHAM	HUMAN SERVICES	HUMAN SERVICES	TRAVEL NCAP 2025 MANAGEMENT & LEADERSHIP TRAINING CONFERENCE-AP250101 T/TA	01/27/25 - 01/31/25	NEW ORLEANS, LA
AGENT FEE 8900894704647	40.00	ANQUINETTE PARHAM	HUMAN SERVICES	HUMAN SERVICES	TRAVEL NCAP 2025 MANAGEMENT & LEADERSHIP TRAINING CONFERENCE-AP250101 T/TA	01/27/25 - 01/31/25	NEW ORLEANS, LA
LYFT *RIDE TUE 10PM	40.00	ANQUINETTE PARHAM	HUMAN SERVICES	HUMAN SERVICES	TRAVEL NCAP 2025 MANAGEMENT & LEADERSHIP TRAINING CONFERENCE-AP250108 TTA	01/27/25 - 01/31/25	NEW ORLEANS, LA
LOT A EPS	150.00	ANQUINETTE PARHAM	HUMAN SERVICES	HUMAN SERVICES	TRAVEL NCAP 2025 MANAGEMENT & LEADERSHIP TRAINING CONFERENCE-AP250105 TTA	01/27/25 - 01/31/25	NEW ORLEANS, LA
REALTOR ASSOCIATION/MLS	20.00	MICHAEL HAKANSON	LEGAL	GENERAL FUND	CE COURSE- RD 982 HARASSMENT PREVENTION	01/07/25	ONLINE
REALTOR ASSOCIATION/MLS	40.00	MICHAEL HAKANSON	LEGAL	GENERAL FUND	CE CLASS- COR 1906- ILLINOIS CORE	01/07/25	ONLINE
PAYPAL *APAL	80.00	T.CAGNONI	MAYOR	GENERAL FUND	IL APA WEBINAR	01/29/25	ONLINE
PROCTORU MEASURE	24.00	NATE WOLF	PARKING	PARKING	IDA GENERAL STANDARDS EXAM	01/03/25	ONLINE
PAYPAL *TAPRACTACT	2,100.00	GEIKEN, JESSE; WARREN, MATTHEW; MOOF	POLICE	GENERAL FUND	REGISTRATION FOR BALLISTIC SHIELD COURSE	12/12/25 - 12/13/25	ROCKFORD, IL
COMFORT SUITES MATOON	657.56	MURPHY, AARON	POLICE	GENERAL FUND	HOTEL FOR CRASH INVESTIGATION 2 COURSE	01/05/25 - 01/10/25	MATTOON, IL
NU CPS REGISTRATION	9,200.00	HATHFIELD, ROBBY; DOBRAN, JASON	POLICE	GENERAL FUND	REGISTRATION FOR STAFF AND COMMAND PROGRAM	02/10/25 - 06/20/25	DEKALB, IL
IDEOA.ORG	350.00	COX, ADAM	POLICE	GENERAL FUND	REGISTRATION FOR IDEOA TRAINING COURSE	04/09/25 - 04/11/25	EAST PEORIA, IL
IDEOA.ORG	350.00	SCHNEIDER, MICHAEL	POLICE	GENERAL FUND	REGISTRATION FOR IDEOA TRAINING COURSE	04/09/25 - 04/11/25	EAST PEORIA, IL
COMFORT SUITES MATOON	684.59	MURPHY, AARON	POLICE	GENERAL FUND	HOTEL FOR CRASH INVESTIGATION 2 COURSE	01/12/25 - 01/17/25	MATTOON, IL
SQ *LABOR ARBITRATION INS	900.00	REDD, CARLA; REFFETT, ROBERT	POLICE	GENERAL FUND	REGISTRATION FOR CHICAGO LABOR LAW & LABOR ARBITRATION CONFERENCE	04/11/25	CHICAGO, IL
SQ *LABOR ARBITRATION INS	450.00	EAGLESON, TY	POLICE	GENERAL FUND	REGISTRATION FOR CHICAGO LABOR LAW & LABOR ARBITRATION CONFERENCE	04/11/25	CHICAGO, IL
SQ *LABOR ARBITRATION INS	450.00	TORRANCE, EDDIE	POLICE	GENERAL FUND	REGISTRATION FOR CHICAGO LABOR LAW & LABOR ARBITRATION CONFERENCE	04/11/25	CHICAGO, IL
THE FAIRMONT HOTEL CHICA	271.31	EAGLESON, TY	POLICE	GENERAL FUND	HOTEL FOR CHICAGO LABOR LAW & LABOR ARBITRATION CONFERENCE	04/11/25	CHICAGO, IL
THE FAIRMONT HOTEL CHICA	292.44	TORRANCE, EDDIE	POLICE	GENERAL FUND	HOTEL FOR CHICAGO LABOR LAW & LABOR ARBITRATION CONFERENCE	04/11/25	CHICAGO, IL
ILLINOIS AWWA	56.00	JOSH BAYLOR & KEVIN LUNDGREN	WATER	WATER	PERMANGANATE FOR DRINKING WATER TREATMENT	02/04/25	ONLINE
OPC COL*SERVICE FEE	3.63	KEVIN LUNDGREN	WATER	WATER	SERVICE FEE FOR KEVIN'S CLASS ONLINE PURCHASE FOR BASIC RESIDENTIAL PLUMBING	03/18/25	ROCKFORD, IL
OPC COL*SERVICE FEE	3.63	ROBERT LOUIS	WATER	WATER	SERVICE FEE FOR BOBBY'S CLASS ONLINE PURCHASE FOR BASIC RESIDENTIAL PLUMBING	03/18/25	ROCKFORD, IL

MERCHANT	AMOUNT	EMPLOYEE	DEPARTMENT	FUND	TRAINING	DATES	LOCATION
ACI*ROCKVALLEY CONTED	145.00	KEVIN LUNDGREN	WATER	WATER	BASIC RESIDENTIAL PLUMBING	03/18/25	ROCKFORD, IL
ACI*ROCKVALLEY CONTED	145.00	ROBERT LOUIS	WATER	WATER	BASIC RESIDENTIAL PLUMBING	03/18/25	ROCKFORD, IL
SQ *APWA - ILLINOIS CHAPT	850.00	JUSTIN CHRISTMAN	WATER	WATER	ILLINOIS PUBLIC SERVICE INSTITUTE	10/05/25 - 10/10/25	EFFINGHAM, IL
ILLINOIS AWWA	250.00	JAMIE ROTT	WATER	WATER	ISAWWA WATERCON 2025	04/15/25 - 04/16/25	PEORIA, IL
ILLINOIS AWWA	453.00	JOHN EVANS	WATER	WATER	ISAWWA WATER DISTRIBUTION O&M FOR CLASS C/D	02/26/25 - 02/28/25	ROCKFORD, IL
ILLINOIS AWWA	453.00	HEATHER PADGETT	WATER	WATER	ISAWWA WATER DISTRIBUTION O&M FOR CLASS C/D	02/26/25 - 02/28/25	ROCKFORD, IL
TOTAL	42,051.56	Feb-25					

MERCHANT	AMOUNT	EMPLOYEE	DEPARTMENT	FUND	TRAINING	DATES	LOCATION
UNITED 016245932381	388.20	SARAH LEYS	CD ADMIN	GENERAL FUND	NCRC TRAVEL	03/24/25 -03/27/25	WASHINGTON, DC
AMERICAN AIR0012217361683	296.96	MARTINEZ	CDBG	CDBG	MARTINEZ TRAVEL	04/20/25 - 04/24/25	COLUMBUS, OH
AMERICAN AIR0012217361682	296.96	MANLEY	CDBG	CDBG	MANLEY TRAVEL	04/20/25 - 04/24/25	COLUMBUS, OH
COACH USA INC	106.90	MARTINEZ, MANLEY	CDBG	CDBG	MARTINEZ & MANLEY TRAVEL	04/20/25 - 04/24/25	COLUMBUS, OH
WINNEBAGO CO. SWCD	20.00	TIM HINKENS	CIP	CIP	WCSE AND SEDIMENT WORKSHOP	03/06/25	ROCKFORD, IL
WINNEBAGO CO. SWCD	40.00	RYAN LUNDBERG	CIP	CIP	WCSE AND SEDIMENT WORKSHOP	03/06/25	ROCKFORD, IL
FRONTIER AI PMIP4B	337.96	RUDY MORENO, JORDAN MOYER	CONST SERV	GENERAL FUND	AVOLVE INSPIRE - USER CONFERENCE RETURN FLIGHT	04/28/25 -05/01/25	SCOTSDALE, AZ
AMERICAN AIR0017220691908	158.48	RUDY MORENO	CONST SERV	GENERAL FUND	AVOLVE INSPIRE - USER CONFERENCE DEPARTING FLIGHT	04/28/25 -05/01/25	SCOTSDALE, AZ
AMERICAN AIR0017220691909	158.48	JORDAN MOYER	CONST SERV	GENERAL FUND	AVOLVE INSPIRE - USER CONFERENCE DEPARTING FLIGHT	04/28/25 -05/01/25	SCOTSDALE, AZ
HOTEL VALLEY HO HOTEL	1,300.74	RUDY MORENO, JORDAN MOYER	CONST SERV	GENERAL FUND	AVOLVE INSPIRE - USER CONFERENCE STAY HOTEL VALLEY HO	04/28/25 -05/01/25	SCOTSDALE, AZ
PRICELN'FRONTIER AIRLI	48.07	RUDY MORENO, JORDAN MOYER	CONST SERV	GENERAL FUND	AVOLVE INSPIRE - USER CONFERENCE AUTHORIZATION CHARGE	04/28/25 -05/01/25	SCOTSDALE, AZ
ORLEANS HOTEL & CASINO	468.90	NELSON SJOSTROM	CONST SERV	GENERAL FUND	2025 ICC EDUCODE ICC TRAINING-BOARDING ORLEANS HOTEL & CASINO	02/23/25 -02/27/25	LAS VEGAS, NV
ORLEANS HOTEL & CASINO	860.41	RUDOLFO MORENO	CONST SERV	GENERAL FUND	2025 ICC EDUCODE ICC TRAINING-BOARDING ORLEANS HOTEL & CASINO	02/23/25 -03/02/25	LAS VEGAS, NV
AIR CONDITIONING CONTRAC	224.10	NELSON SJOSTROM	CONST SERV	GENERAL FUND	ACCA RIGHTTEK-RESIDENTIAL SYSTEM DESIGN TRAINING	02/18/25 -02/27/25	ONLINE
INTNL CODE COUNCIL INC	250.00	RUDY MORENO	CONST SERV	GENERAL FUND	2021 COMMERCIAL BUILD INSPEC B2 STUDY GUIDE,CONCRETE MANUAL AND PDF	02/06/25	ROCKFORD, IL
INTNL CODE COUNCIL INC	57.30	RUDY MORENO	CONST SERV	GENERAL FUND	LEGAL ASPECTS OF CODE ADMIN, 2017 EDITION	02/10/25	ROCKFORD, IL
FSP'SUBURBAN BUILDING OFF	1,025.00	NELSON SJOSTROM,CHAD HOLADAY,JORD	CONST SERV	GENERAL FUND	SBOS TRAINING	03/14/25	WOODRIDGE,IL
FSP'SUBURBAN BUILDING OFF	700.00	CHAD HOLADAY,JORDAN MOYER,JESSICA ,	CONST SERV	GENERAL FUND	SBOS TRAINING	03/21/25	WOODRIDGE, IL
BUILDER'S BOOK, INC.	81.40	NELSON SJOSTROM	CONST SERV	GENERAL FUND	B1 RESIDENTIAL BUILDING INPSECTOR 2021 IRC STUDY TOOL	02/24/25	ROCKFORD, IL
INTNL CODE COUNCIL INC	240.00	RUDY MORENO	CONST SERV	GENERAL FUND	B2-COMMERCIAL BUILDING INSPECTOR 2021 ONLINE PROCTTORED TESTING	02/26/25	ONLINE
ORLEANS HOTEL & CASINO	77.05	RUDOLFO MORENO	CONST SERV	GENERAL FUND	2025 ICC EDUCODE ICC TRAINING-BOARDING ORLEANS HOTEL & CASINO	02/23/25 - 03/02/25	LAS VEGAS, NV
WINNEBAGO CO. SWCD	20.00	TIM HINKENS	ENGINEERING	GENERAL FUND	WCSE AND SEDIMENT WORKSHOP	03/06/25	ROCKFORD, IL
WINNEBAGO CO. SWCD	40.00	NICHOLAS RIPPENTROP	ENGINEERING	GENERAL FUND	WCSE AND SEDIMENT WORKSHOP	03/06/25	ROCKFORD, IL
WINNEBAGO CO. SWCD	40.00	SAMANTHA FLYNN	ENGINEERING	GENERAL FUND	WCSE AND SEDIMENT WORKSHOP	03/06/25	ROCKFORD, IL
WINNEBAGO CO. SWCD	40.00	BRAD HOLCOMB	ENGINEERING	GENERAL FUND	WCSE AND SEDIMENT WORKSHOP	03/06/25	ROCKFORD, IL
WINNEBAGO CO. SWCD	40.00	JEREMY MITCHELL	ENGINEERING	GENERAL FUND	WCSE AND SEDIMENT WORKSHOP	03/06/25	ROCKFORD, IL
HYATT REGENCY SAVANNAH	1,229.20	MARTIN BLOOM	ENGINEERING	GENERAL FUND	MUNICIPAL SPECIAL EVENTS CONFERENCE	01/16/25 - 01/20/25	SAVANNAH, GA
HYATT REGENCY SAVANNAH	1,229.20	KELLY NOKES	ENGINEERING	GENERAL FUND	MUNICIPAL SPECIAL EVENTS CONFERENCE	01/16/25 - 01/20/25	SAVANNAH, GA
WINNEBAGO CO. SWCD	40.00	SAMUEL BELLONE	ENGINEERING	GENERAL FUND	WCSE AND SEDIMENT WORKSHOP	03/06/25	ROCKFORD, IL
U OF I ONLINE PAYMENT	250.00	SAMUEL BELLONE	ENGINEERING	GENERAL FUND	WCSE AND SEDIMENT WORKSHOP	04/23/25	ONLINE
U OF I ONLINE PAYMENT	150.00	SAMUEL BELLONE	ENGINEERING	GENERAL FUND	WCSE AND SEDIMENT WORKSHOP	03/25/25	ONLINE
ILLINOIS GEOGRAPHIC INFO	75.00	JUSTIN EMERSON	ENGINEERING	GENERAL FUND	ILGISA CONFERENCE	03/07/25	SPRINGFIELD, IL
ILLINOIS GEOGRAPHIC INFO	75.00	ALICIA STEPLER	ENGINEERING	GENERAL FUND	ILGISA CONFERENCE	03/07/25	SPRINGFIELD, IL
EB *CSEC 101 UNDERSTAN	188.58	AVERY DILLON	FAMILY PEACE CENTER	FAMILY PEACE CENTER	WEBINAR: UNDERSTANDING & RESPONDING	02/04/25	ONLINE
EB *CSEC 101 UNDERSTAN	188.58	IVY WALLACE	FAMILY PEACE CENTER	FAMILY PEACE CENTER	WEBINAR: UNDERSTANDING & RESPONDING	02/04/25	ONLINE
ALLIANCE FOR HOPE INTERN	595.00	STEFANIE RODRIGUEZ	FAMILY PEACE CENTER	FAMILY PEACE CENTER	REGISTRATION FOR FJCC CONF.	04/29/25 - 05/01/25	SAN DIEGO, CA
CYPHERWORX INC	275.00	PPC VOLUNTEER LEISHA KURY	FAMILY PEACE CENTER	FAMILY PEACE CENTER	DOMESTIC VIOLENCE TRAINING	02/14/25	ONLINE
COACH USA INC	53.45	CARLSON	FAMILY PEACE CENTER	FAMILY PEACE CENTER	BUS TO OHARE FOR TRAVEL TO ALLIANCE FOR HOPE SUMMIT	03/04/25 - 03/06/25	WASHINGTON, DC
WIPEFL LLP	145.00	SUSAN PETERSON	FINANCE	GENERAL FUND	SUBRECIPIENT MONITORING	02/20/25	ONLINE
OPC COL'SERVICE FEE	2.63	NICHOLAS CARTER	FINANCE	GENERAL FUND	EXCEL 2021 LEVEL 3 (ROCK VALLEY COLLEGE)	04/09/25 - 04/16/25	ROCKFORD, IL
ACFROCKVALLEY CONTED	105.00	NICHOLAS CARTER	FINANCE	GENERAL FUND	EXCEL 2021 LEVEL 3 (ROCK VALLEY COLLEGE)	04/09/25 - 04/16/25	ROCKFORD, IL
INTNL CODE COUNCIL	75.00	JASON VIVEROS	FIRE	GENERAL FUND	2024 IBC EXTERIOR WALL & OPENING PROTECTION	02/27/25	ONLINE
INTNL CODE COUNCIL	75.00	JASON VIVEROS	FIRE	GENERAL FUND	2024 IBC SPECIAL BLDG TYPES, FEATURES & HAZARDS	02/28/25	ONLINE
INTNL CODE COUNCIL	75.00	NATHAN CARDEN	FIRE	GENERAL FUND	2024 IBC TYPES OF CONSTRUCTION	02/25/25	ONLINE
INTNL CODE COUNCIL	75.00	NATHAN CARDEN	FIRE	GENERAL FUND	APT BLDGS FIRE & LIFE SAFETY	02/26/25	ONLINE
INTNL CODE COUNCIL	75.00	TIMOTHY BROWN	FIRE	GENERAL FUND	2024 IBC OCCUPANCY CLASSIFICATION	02/24/25	ONLINE
INTNL CODE COUNCIL	75.00	TIMOTHY BROWN	FIRE	GENERAL FUND	2024 IBC USE OF FIRE SPRINKLERS & ALARMS	02/24/25	ONLINE
INTNL CODE COUNCIL	150.00	TIMOTHY BROWN	FIRE	GENERAL FUND	PLAN REVIEW SKILLS	02/27/25	ONLINE
INTNL CODE COUNCIL	150.00	CHRISTOPHER TUMEO	FIRE	GENERAL FUND	WHEN DISASTER STRIKES-EVAL TRNG	02/25/25	ONLINE
INTNL CODE COUNCIL	150.00	CHRISTOPHER TUMEO	FIRE	GENERAL FUND	2024 IBC MEANS OF EGRESS	02/26/25	ONLINE
INTNL CODE COUNCIL	75.00	CHRISTOPHER TUMEO	FIRE	GENERAL FUND	2024 IBC MIXED OCCUPANCIES	02/27/25	ONLINE
INTNL CODE COUNCIL	75.00	MICHAEL SCHNAPER	FIRE	GENERAL FUND	2024 IBC EXTERIOR WALL & OPENING PROTECTION	02/27/25	ONLINE
INTNL CODE COUNCIL	75.00	MICHAEL SCHNAPER	FIRE	GENERAL FUND	2024 IBC SPECIAL BLDG. TYPES, FEATURES & HAZARDS	02/28/25	ONLINE
LAW ENFORCEMENT SEMINARS	445.00	TIMOTHY BROWN	FIRE	GENERAL FUND	BACKGROUND INVESTIGATIONS	03/13/25 - 03/14/25	ONLINE
INTNL CODE COUNCIL	75.00	TIM MORRIS, JR	FIRE	GENERAL FUND	APT. BLDG. FIRE & LIFE SAFETY	02/26/25	ONLINE
INTNL CODE COUNCIL	75.00	TIMOTHY MORRIS, JR	FIRE	GENERAL FUND	LEADERSHIP IMPACT 2025 INNOVATION AND CHANGE	02/28/25	ONLINE
LAW ENFORCEMENT SEMINARS	445.00	TIMOTHY MORRIS, JR	FIRE	GENERAL FUND	BACKGROUND INVESTIGATIONS FOR POLICE APPLICANTS	03/13/25 - 03/14/25	ONLINE
PSI EXAMS	175.00	FIREFIGHTER PHIL RUSSELL	FIRE	GENERAL FUND	FAA TESTING/UAS DRONE EXAM - ROCK VALLEY COLLEGE	02/07/25	ROCKFORD, IL
MABAS ILLINOIS	325.00	DISTRICT CHIEF SLADE BERRY	FIRE	GENERAL FUND	MABAS IL TRAINING SUMMIT/COMMAND COMMUNICATIONS TRAINING	02/17/25 - 02/18/25	BLOOMINGTON IL
PSI EXAMS	175.00	FIREFIGHTER SAM CSUKOR	FIRE	GENERAL FUND	FAA TESTING/UAS DRONE EXAM - ROCK VALLEY COLLEGE	02/11/25	ROCKFORD, IL
PSI EXAMS	175.00	FIREFIGHTER MATT UNGER	FIRE	GENERAL FUND	FAA TESTING/UAS DRONE EXAM - ROCK VALLEY COLLEGE	02/11/25	ROCKFORD, IL
PSI EXAMS	175.00	FIREFIGHTER BRANDIN WATERS	FIRE	GENERAL FUND	FAA TESTING/UAS DRONE EXAM - ROCK VALLEY COLLEGE	02/11/25	ROCKFORD, IL
PADI AMERICAS INC	1,225.50	LIEUTENANT BROCK LANIER	FIRE	GENERAL FUND	PADI DIVE TEAM CERTIFICATION CARDS	02/24/25	ROCKFORD, IL
PADI AMERICAS INC	612.71	LIEUTENANT BROCK LANIER	FIRE	GENERAL FUND	PADI DIVE TEAM TRAINING MATERIALS	02/24/25	ROCKFORD, IL
PSI EXAMS	175.00	ERIC SCHIRMER	FIRE	GENERAL FUND	RVC EXAM FEE	02/04/25	ROCKFORD, IL
PSI EXAMS	175.00	BRIAN CAPEZIO	FIRE	GENERAL FUND	RVC DRONE EXAM FEE	02/11/25	ROCKFORD, IL
HILTON ADVPURCH8002367113	834.11	RYAN TAYLOR	FIRE	GENERAL FUND	CONFINED SPACE CLASS	03/09/25 - 03/14/25	CHAMPAIGN, IL
HILTON ADVPURCH8002367113	974.20	ETHAN FLYNN	FIRE	GENERAL FUND	CONFINED SPACE CLASS	03/09/25 - 03/14/25	CHAMPAIGN, IL
CARE COURSES	25.00	REBECA BRITTO	HUMAN SERVICES	HUMAN SERVICES	CARE COURSES BABY SIGNS-FH2501019EHS	02/07/25	VIRTUAL
CARE COURSES	25.00	ANGIE TORRE	HUMAN SERVICES	HUMAN SERVICES	CARE COURSES BABY SIGNS-FH2501019EHS	02/07/25	VIRTUAL
CARE COURSES	25.00	JOVELYN POWELL	HUMAN SERVICES	HUMAN SERVICES	CARE COURSES BABY SIGNS-FH2501019EHS	02/07/25	VIRTUAL
CARE COURSES	25.00	SAVANNAH PERLIN	HUMAN SERVICES	HUMAN SERVICES	CARE COURSES BABY SIGNS-FH2501019EHS	02/07/25	VIRTUAL
BANK OF SPRINGFIELD CTR	3.70	FANIQUA HUGHES	HUMAN SERVICES	HUMAN SERVICES	PARKING IHSA ANNUAL CONFERENCE 2025-FH2502013HS/EHS TTA	02/19/25 - 02/21/25	SPRINGFIELD, IL
BANK OF SPRINGFIELD CTR	1.30	FANIQUA HUGHES	HUMAN SERVICES	HUMAN SERVICES	PARKING IHSA ANNUAL CONFERENCE 2025-FH2502013HS/EHS TTA	02/19/25 - 02/21/25	SPRINGFIELD, IL
DOUBLETREE AB LINCOLN	192.34	SARA KASZCZUK	HUMAN SERVICES	HUMAN SERVICES	HOTEL IHSA ANNUAL CONFERENCE 2025-FH2502012HS/EHS TTA	02/19/25 - 02/21/25	SPRINGFIELD, IL
DOUBLETREE AB LINCOLN	67.58	SARA KASZCZUK	HUMAN SERVICES	HUMAN SERVICES	HOTEL IHSA ANNUAL CONFERENCE 2025-FH2502012HS/EHS TTA	02/19/25 - 02/21/25	SPRINGFIELD, IL
DOUBLETREE AB LINCOLN	192.34	FANIQUA HUGHES	HUMAN SERVICES	HUMAN SERVICES	HOTEL IHSA ANNUAL CONFERENCE 2025-FH2502011HS/EHS TTA	02/19/25 - 02/21/25	SPRINGFIELD, IL
DOUBLETREE AB LINCOLN	67.58	FANIQUA HUGHES	HUMAN SERVICES	HUMAN SERVICES	HOTEL IHSA ANNUAL CONFERENCE 2025-FH2502011HS/EHS TTA	02/19/25 - 02/21/25	SPRINGFIELD, IL

MERCHANT	AMOUNT	EMPLOYEE	DEPARTMENT	FUND	TRAINING	DATES	LOCATION
LEADERSHIP USING DATA	277.50	JESSICA CORNILSEN	HUMAN SERVICES	HUMAN SERVICES	LEADERSHIP USING DATA WEBINAR SERIES-FH2502014HS/EHS TTA	03/10/25 - 03/13/25	ONLINE
LEADERSHIP USING DATA	97.50	JESSICA CORNILSEN	HUMAN SERVICES	HUMAN SERVICES	LEADERSHIP USING DATA WEBINAR SERIES-FH2502014HS/EHS TTA	03/10/25 - 03/13/25	ONLINE
LEADERSHIP USING DATA	277.50	RON WEBB	HUMAN SERVICES	HUMAN SERVICES	LEADERSHIP USING DATA WEBINAR SERIES-FH2502016HS/EHS TTA	03/10/25 - 03/13/25	ONLINE
LEADERSHIP USING DATA	97.50	RON WEBB	HUMAN SERVICES	HUMAN SERVICES	LEADERSHIP USING DATA WEBINAR SERIES-FH2502016HS/EHS TTA	03/10/25 - 03/13/25	ONLINE
THE RIVERFRONT HOTEL NEW	782.72	ANQUINETTE PARHAM	HUMAN SERVICES	HUMAN SERVICES	HOTEL NCAP 2025 MANAGEMENT & LEADERSHIP TRAINING CONFERENECE	01/27/25 - 01/31/25	NEW ORLEANS, LA
ALLEONT AIR QNC	305.00	MICHAEL BROCK	IT	INFORMATION TECHNOLOGY	FLIGHT TO CPX AMERICAS 2025 SUMMIT	02/25/25 - 02/26/25	LAS VEGAS, NV
AMERICAN AIR0012214080846	340.49	J.CACCIAPAGLIA	MAYOR	GENERAL FUND	FLIGHT TO FJC CONFERENCE (FPC TO REIMB.)	04/27/25 - 05/01/25	SAN DIEGO, CA
AMERICAN AIR0012214080845	340.49	S.RODRIGUEZ	MAYOR	GENERAL FUND	FLIGHT TO FJC CONFERENCE (FPC TO REIMB.)	04/27/25 - 05/01/25	SAN DIEGO, CA
TRAVEL GUARD GROUP INC	37.26	J.CACCIAPAGLIA	MAYOR	GENERAL FUND	FLIGHT INSURANCE FOR FPC CONF. (FPC TO REIMB.)	04/27/25	SAN DIEGO, CA
COACH USA INC	53.45	S.RODRIGUEZ	MAYOR	GENERAL FUND	ROUNDRIP BUS TO O'HARE FOR FLIGHT TO FJC CONF. (FPC TO REIMB.)	04/29/25 - 05/01/25	SAN DIEGO, CA
COACH USA INC	67.20	J.CACCIAPAGLIA	MAYOR	GENERAL FUND	ROUNDRIP BUS TO O'HARE FOR FLIGHT TO FJC CONF. (FPC TO REIMB.)	04/29/25 - 05/01/25	SAN DIEGO, CA
UNITED 0162459649763	276.48	J.CACCIAPAGLIA	MAYOR	GENERAL FUND	RETURN FLIGHT FROM FJC CONF. (FPC TO REIMB.)	05/01/25	SAN DIEGO, CA
UNITED 0162459649764	276.48	S.RODRIGUEZ	MAYOR	GENERAL FUND	RETURN FLIGHT FROM FJC CONF. (FPC TO REIMB.)	05/01/25	SAN DIEGO, CA
UNITED 0164472068115	31.99	S.RODRIGUEZ	MAYOR	GENERAL FUND	FLIGHT SEAT SELECTION FEE FOR FJC CONF. (FPC TO REIMB.)	05/01/25	SAN DIEGO, CA
UNITED 0164472068116	40.99	J.CACCIAPAGLIA	MAYOR	GENERAL FUND	FLIGHT SEAT SELECTION FEE FOR FJC CONF. (FPC TO REIMB.)	05/01/25	SAN DIEGO, CA
COACH USA INC	53.45	MCMAMARA	MAYOR	GENERAL FUND	BUS TO O'HARE FOR TRAVEL TO ALLIANCE FOR HOPE SUMMIT	03/04/25 - 03/06/25	WASHINGTON, DC
MARTIN ONE SOURCE	58.00	MAGNUSON & GENTRY	PARKING	PARKING	2 IL PESTICIDE APP MANUALS & WORKBOOKS	02/05/25	ROCKFORD, IL
YWCA OF ROCKFORD	135.00	FRANCISCA FRENCH	PLANNING	GENERAL FUND	TICKET FOR FRANCISCA FRENCH FOR YWCA LEADER LUNCHEON	02/25/25	ROCKFORD, IL
PAYPAL *ILLINOISLAW	200.00	REFFETT, ROBERT	POLICE	GENERAL FUND	REGISTRATION FOR 2025 ILEAS CONFERENCE	03/30/25 - 04/01/25	SPRINGFIELD, IL
COACH USA INC	67.20	CACCIAPAGLIA	POLICE	GENERAL FUND	BUS TO O'HARE FOR TRAVEL TO ALLIANCE FOR HOPE SUMMIT	03/04/25 - 03/06/25	WASHINGTON, DC
HOLIDAY INN CARBONDALE	123.05	SQUIRES, BRIAN	POLICE	GENERAL FUND	HOTEL FOR SIU SPRING 2025 JOB & INTERNSHIP FAIR	02/17/25 - 02/18/25	CARBONDALE, IL
HOLIDAY INN CARBONDALE	123.05	WESCOTT, KYLE	POLICE	GENERAL FUND	HOTEL FOR SIU SPRING 2025 JOB & INTERNSHIP FAIR	02/17/25 - 02/18/25	CARBONDALE, IL
DAIGLE LAW GROUP	295.00	HATFIELD, ROBBY	POLICE	GENERAL FUND	REGISTRATION FOR TACTICAL OPERATIONS LIABILITY COURSE	03/30/25	ONLINE
SQ *SNIPERCRAFT MID-ATLAN	665.00	SCHAEFER, ENRIQUE	POLICE	GENERAL FUND	REGISTRATION FOR SNIPERCRAFT BASIC POLICE COURSE	04/14/25 - 04/18/25	JANESVILLE, WI
EUCI	895.00	JEREMY FINLEY	PW ADMIN	GENERAL FUND	EUCI WATER DEMAND FORECASTING	03/05/25	ONLINE
UW CE REGISTRATION CENTER	1,295.00	JAMIE ROTT	WATER	WATER	UNIVERSITY OF WISCONSIN - WATER STORAGE TANKS TRAINING	05/20/25 - 05/22/25	MADISON, WI
UW CE REGISTRATION CENTER	1,295.00	MATT BAILLARGEON	WATER	WATER	UNIVERSITY OF WISCONSIN - WATER STORAGE TANKS TRAINING	05/20/25 - 05/22/25	MADISON, WI
ILLINOIS AWWA	60.00	MELISSA JONES	WATER	WATER	ISAWWA EMPOWERING CONFERENCE	03/07/25	HOFFMAN ESTATES, IL
<b>TOTAL</b>	<b>28,297.21</b>	<b>Mar-25</b>					

**July 2025 PURCHASES, \$10,000 - \$25,000**

Purchase Order	Fiscal Year	Total Ordered	Total Liquidated	Name	City	State	Zip Code	Notes
25110376	2025	10,000.00	10,000.00	ONE BODY COLLABORATIVES	ROCKFORD	IL	61106	Per Agreement
25110382	2025	12,426.00	2,500.00	ROCKFORD AREA ARTS COUNCIL	ROCKFORD	IL	61104	Per Agreement
25150175	2025	12,000.00	12,000.00	PETERSON JOHNSON & MURRAY LLC	OAK BROOK	IL	60523	Professional Services
25170159	2025	25,000.00	25,000.00	ALIGNMENT ROCKFORD	ROCKFORD	IL	61103	Per Agreement
25179010	2025	20,000.00	20,000.00	MIDWEST MAILWORKS INC	ROCKFORD	IL	61104-7369	Per Contract
25179013	2025	24,999.00	24,999.00	OPPORTUNITY MODELING PARTNERS LLC	CHICAGO	IL	60613	Professional Services
25180479	2025	14,950.00	14,950.00	SENTINEL TECHNOLOGIES	DOWNERS GROVE	IL	60515	Software Maintenance
25180480	2025	15,360.00	15,360.00	PROGRESS SOFTWARE CORPORATION	RALEIGH	NC	27603	Software Maintenance
25180484	2025	24,992.00	24,992.00	ZOHO CORPORATION	PLEASANTON	CA	94588	Software Maintenance
25210358	2025	10,000.00	10,000.00	BRIAN STRAWSER	ROCKFORD	IL	61102	Per Agreement
25210366	2025	24,500.00	24,500.00	CELLEBRITE USA INC	GLEN ROCK	NJ	07452-3321	Membership Dues
25210371	2025	19,740.00	19,740.00	TJ CONEVERAS INC	ROCKFORD	IL	61102	Per Contract
25210372	2025	20,137.20	20,137.20	RAY OHERRON CO INC	DANVILLE	IL	61832	Per Contract
25210385	2025	24,999.00	24,999.00	EVIDENCE IQ INC	LEMONT	IL	60439	Membership Dues
25301126	2025	15,258.58	15,258.58	WESCO DISTRIBUTION INC	PITTSBURGH	PA	15219	3 Quotes
25301129	2025	10,412.75	0.00	ILLINOIS ENVIRONMENTAL PROTECTION AGENCY	SPRINGFIELD	IL	62794-9276	Per Agreement
25305110	2025	14,680.95	14,680.95	DLT SOLUTIONS LLC	HERNDON	VA	20171	Membership Dues
25305113	2025	13,699.61	13,699.61	DPI CONSTRUCTION INC	PECATONICA	IL	61063	Emergency Repair
25306190	2025	14,394.00	0.00	WEST SIDE TRACTOR SALES	LISLE	IL	60532	Per Agreement
25406200	2025	22,150.00	22,150.00	GERALDO ROOFING CORPORATION	WHEELING	IL	60090	Per Contract
25406201	2025	15,439.00	0.00	N TRAK GROUP LLC	LOVES PARK	IL	61111	Per Contract

**365,138.09**

MERCHANT	AMOUNT	EMPLOYEE	DEPARTMENT	FUND	TRAINING	DATES	LOCATION
WOMEN & WEALTH	127.75	SARAH LEYS	CD ADMINISTRATION	GENERAL FUND	WOMEN WHO LEAD GALA	3/29/25	ROCKFORD, IL
HOUSING ACTION ILLINOIS	40.00	SARAH LEYS	CD ADMINISTRATION	GENERAL FUND	HOUSING ACTION IL EVENT	4/24/25	CHICAGO, IL
WP*ELIMINATE RACISM	40.00	BARB CHIDLEY	CD ADMINISTRATION	GENERAL FUND	ELIMINATE RACISM 815 REGISTRATION	5/8/2025	ROCKFORD, IL
UNITED 0162474073878	309.96	GISELLE MARTINEZ	CD ADMINISTRATION	CD-BLOCK GRANT	NCDA REGION V CONFERENCE REG	4/21/25-4/23/25	COLUMBUS, OH
UNITED 0162474073879	309.96	CHRISTINE MANLEY	CD ADMINISTRATION	CD-BLOCK GRANT	NCDA REGION V CONFERENCE REG	4/21/25-4/23/25	COLUMBUS, OH
U OF I ONLINE PAYMENT	50.00	ALEXANDER SMITH	CIP	CIP	DOCUMENTATION AND CONTRACT QUANTITIES TRAINING	4/1/25	VIRTUAL
U OF I ONLINE PAYMENT	50.00	MATTHEW JACOBSON	CIP	CIP	DOCUMENTATION AND CONTRACT QUANTITIES TRAINING	4/1/25	VIRTUAL
IL TOLLWAY-AUTOREPLENISH	10.00	ROCKFORD, IL	CIP	CIP	IPASS REPLENISHMENT	3/11/25	ENGINEERING TEAM
IL TOLLWAY-AUTOREPLENISH	10.00	ROCKFORD, IL	CIP	CIP	IPASS REPLENISHMENT	3/12/25	ENGINEERING TEAM
COMFORT SUITES SPRNGFIEL	29.13	JUSTIN EMERSON	CIP	CIP	GIS REGIONAL MTG	03/07/25	SPRINGFIELD, IL
COMFORT SUITES SPRNGFIEL	29.13	ALECIA STEPLER	CIP	CIP	GIS REGIONAL MTG	03/07/25	SPRINGFIELD, IL
INT'L CODE COUNCIL INC	618.00	RUDY MORENO	CONSTR & DEV SERVICES	GENERAL FUND	ICC 2021 RBI STUDY GUIDE & EXAM, PROPERTY MAINT. STUDY GUIDE & EXAM	03/12/2025	ONLINE
JASONPHELPS	195.00	PATECIA RUSH	CONSTR & DEV SERVICES	GENERAL FUND	TYPE 1 HOOD CLASS	04/09/2025	ONLINE
INT'L CODE COUNCIL INC	69.00	PATECIA RUSH	CONSTR & DEV SERVICES	GENERAL FUND	ICC 2021 RESIDENTIAL MECHANICAL INSPECTOR STUDY GUIDE	03/18/2025	ONLINE
BUILDING AND FIRE CODE	760.00	THOMAS EARLYWINE, PATECIA RUSH	CONSTR & DEV SERVICES	GENERAL FUND	SEMINAR: UNDERSTANDING 2021 INTERNATIONAL MECHANICAL CODE	04/02/2025	ELGIN, IL
PY *ILLINOIS TAX INCREMEN	375.00	ANNA GARRISON	ECONOMIC DEVELOPMENT	GENERAL FUND	IEZA & ITIA SPRING CONFERENCE REG	5/7/25-5/9/25	SPRINGFIELD, IL
EVEN HOTEL CHICAGO TINLEY	182.40	BRAD HOLCOMB	ENGINEERING	GENERAL FUND	IAFSM ANNUAL CONFERENCE	3/11/25-3/12/25	TINLEY PARK
EVEN HOTEL CHICAGO TINLEY	182.40	JEREMY MITCHELL	ENGINEERING	GENERAL FUND	IAFSM ANNUAL CONFERENCE	3/11/25-3/12/25	TINLEY PARK
COMFORT SUITES SPRNGFIEL	87.38	JUSTIN EMERSON	ENGINEERING	GENERAL FUND	GIS REGIONAL MTG	03/07/25	SPRINGFIELD, IL
COMFORT SUITES SPRNGFIEL	87.38	ALECIA STEPLER	ENGINEERING	GENERAL FUND	GIS REGIONAL MTG	03/07/25	SPRINGFIELD, IL
CYPHERWORX INC	275.00	VOL. NAVDEEP KAUR	FAMILY PEACE CENTER	FAMILY PEACE CENTER	DV TRAINING	3/05/25	ONLINE
MEIJER STORE #192	18.82	FPC STAFF MEMBERS	FAMILY PEACE CENTER	FAMILY PEACE CENTER	REFRESHMENTS FOR FPC STAFF RETREAT	3/14/25	ROCKFORD, IL
PY *MARYS MARKET	153.30	FPC STAFF	FAMILY PEACE CENTER	FAMILY PEACE CENTER	LUNCH FOR FPC STAFF RETREAT	3/14/25	ROCKFORD, IL
SON DANGER ASSESSMENT	540.00	FPC VOLUNTEERS	FAMILY PEACE CENTER	FAMILY PEACE CENTER	DANGER ASSESSMENT TRAINING	ONGOING	ONLINE
ILLINOIS GOVERNMENT FINAN	120.00	PATTY ROHDE	FINANCE	GENERAL FUND	2025 PENSION INSTITUTE WEBINAR SERIES	03/19/25-03/20/25	WEBINAR
GOVERNMENT FINANCE OFF	50.00	DAJANA GLISIC	FINANCE	GENERAL FUND	GFOA TRAINING: 10 STEPS TO BETTER COLLABORATION BETWEEN FINANCE AND FIRE	03/04/25	ONLINE
GOVERNMENT FINANCE OFF	50.00	DAJANA GLISIC	FINANCE	GENERAL FUND	LEVERAGING AI IN THE FINANCE OFFICE	03/13/25	ONLINE
NATIONAL INSTITUTE OF GO	520.00	VISHRUTI PATEL	FINANCE	GENERAL FUND	NIGP CORE CERTIFICATE	04/01/25	ONLINE
ILLINOIS AWWA	240.00	KRISTIN BOEL, MAIRA ACOSTA, MIGUEL HERNANDEZ	FINANCE	GENERAL FUND	ISAW EMPOWERING CONF	3/7/25	HOFFMAN ESTATES, IL
AMERICAN AIR0014457310953	35.00	REBECCA TYO	FIRE	GENERAL FUND	CPSE-EXCELLENCE CONFERENCE - CHECKED BAGGAGE FEE	03/31/25-04/04/25	ORLANDO, FL
AMERICAN AIR0014457310952	35.00	JESSICA BODELL	FIRE	GENERAL FUND	CPSE-EXCELLENCE CONFERENCE - CHECKED BAGGAGE FEE	03/31/25-04/04/25	ORLANDO, FL
UBER *TRIP	56.75	MATT CORDONNIER+4	FIRE	GENERAL FUND	CPSE-EXCELLENCE CONFERENCE -UBER FEE FOR TRANSPORT FROM AIRPORT TO HOTEL	03/31/25-04/04/25	ORLANDO, FL
UBER *TRIP	11.35	MATT CORDONNIER+4	FIRE	GENERAL FUND	CPSE-EXCELLENCE CONFERENCE -UBER FEE FOR TRANSPORT FROM AIRPORT TO HOTEL	03/31/25-04/04/25	ORLANDO, FL
AEDSSENTIALS, INC	225.00	DISTRICT CHIEF SHAWN MUSZYNSKI	FIRE	GENERAL FUND	PHTLS REFRESHER CLASS-AED ESSENTIALS	3/19/2025	ROCKFORD, IL
AEDSSENTIALS, INC	215.00	DISTRICT CHIEF JOE MONTAVON	FIRE	GENERAL FUND	TRIFECTA REFRESHER CLASS-ACLS-BLS-PALS-AED ESSENTIALS	7/10/2025	ROCKFORD, IL
PSI EXAMS	175.00	FF DUSTIN COLLINS	FIRE	GENERAL FUND	UAS PART 107 DRONE EXAM - ROCK VALLEY COLLEGE	04/01/25	ROCKFORD, IL
PSI EXAMS	175.00	FF GARREN RAINER	FIRE	GENERAL FUND	UAS PART 107 DRONE EXAM - ROCK VALLEY COLLEGE	04/01/25	ROCKFORD, IL
SQ *NOTARY PUBLIC ASSOCIA	49.00	ROBYN GUSTAFSON	FIRE	GENERAL FUND	NOTARY CLASS	3/5/25	ONLINE
HOMES TO SUITES BY HILTON	832.81	MARIO DURAN	FIRE	GENERAL FUND	CONFINED SPACE CLASS	3/9-3/14/2025	CHAMPAIGN, IL
HOMES TO SUITES BY HILTON	832.81	SAMUEL RODRIGUEZ	FIRE	GENERAL FUND	CONFINED SPACE CLASS	3/9-3/14/2025	CHAMPAIGN, IL
NATIONAL REGISTRY EMT	32.00	SEBASTIAN PENA-TORRES	FIRE	GENERAL FUND	PARAMEDIC RECERTIFICATION APPLICATION FEE	03/18/25	ONLINE
CIRCLE K # 01422	35.54	CGREENWOOD, MSTRAWSER,TROBINSON	HEALTH & HUMAN SERVICES	HEALTH & HUMAN SERVICES	FUEL-OCA GRANT APPLICATION WORKSHOP PY26	3/4/25-3/5/25	SPRINGFIELD IL
SPRINGFIELD HOLIDAY INN	181.26	TE'AIRIA ROBINSON	HEALTH & HUMAN SERVICES	HEALTH & HUMAN SERVICES	HOTEL PY26 OCA GRANT APPLICATION WORKSHOP	3/4/25-3/5/25	SPRINGFIELD IL
SPRINGFIELD HOLIDAY INN	181.26	MARTHA STRAWSER	HEALTH & HUMAN SERVICES	HEALTH & HUMAN SERVICES	HOTEL PY26 OCA GRANT APPLICATION WORKSHOP	3/4/25-3/5/25	SPRINGFIELD IL
SPRINGFIELD HOLIDAY INN	181.26	CHRISTOPHER GREENWOOD	HEALTH & HUMAN SERVICES	HEALTH & HUMAN SERVICES	HOTEL PY26 OCA GRANT APPLICATION WORKSHOP	3/4/25-3/5/25	SPRINGFIELD IL
WWW.HANNACENTER.ORG	559.00	CARMELA CRUZ	HEALTH & HUMAN SERVICES	HEALTH & HUMAN SERVICES	TRAUMA EQUIPED TRAINING	3/10 - 3/13/25	VIRTUAL
WWW.HANNACENTER.ORG	559.00	MARY TROTTER	HEALTH & HUMAN SERVICES	HEALTH & HUMAN SERVICES	TRAUMA EQUIPED TRAINING	3/10 - 3/13/25	VIRTUAL
WWW.HANNACENTER.ORG	140.00	ANGIE TORRE	HEALTH & HUMAN SERVICES	HEALTH & HUMAN SERVICES	TRAUMA EQUIPED TRAINING SUPERVISOR ADD ON	3/10 - 3/13/25	VIRTUAL
WWW.HANNACENTER.ORG	1,118.00	REBECA BRITO AND ANGIE TORRE	HEALTH & HUMAN SERVICES	HEALTH & HUMAN SERVICES	TRAUMA EQUIPED TRAINING	3/10 - 3/13/25	VIRTUAL
PAYPAL *IACAAIL IACAAI	238.19	ANQUETTE PARHAM	HEALTH & HUMAN SERVICES	HEALTH & HUMAN SERVICES	REGISTRATION 2025 IACAA ANNUAL CONFERENCE	5/4 - 5/6/25	SPRINGFIELD, IL
PAYPAL *IACAAIL IACAAI	238.18	ANQUETTE PARHAM	HEALTH & HUMAN SERVICES	HEALTH & HUMAN SERVICES	REGISTRATION 2025 IACAA ANNUAL CONFERENCE	5/4 - 5/6/25	SPRINGFIELD, IL
PAYPAL *IACAAIL IACAAI	19.85	ANQUETTE PARHAM	HEALTH & HUMAN SERVICES	HEALTH & HUMAN SERVICES	REGISTRATION 2025 IACAA ANNUAL CONFERENCE	5/4 - 5/6/25	SPRINGFIELD, IL
PAYPAL *IACAAIL IACAAI	33.08	ANQUETTE PARHAM	HEALTH & HUMAN SERVICES	HEALTH & HUMAN SERVICES	REGISTRATION 2025 IACAA ANNUAL CONFERENCE	5/4 - 5/6/25	SPRINGFIELD, IL
PAYPAL *IACAAIL IACAAI	33.08	ANQUETTE PARHAM	HEALTH & HUMAN SERVICES	HEALTH & HUMAN SERVICES	REGISTRATION 2025 IACAA ANNUAL CONFERENCE	5/4 - 5/6/25	SPRINGFIELD, IL
PAYPAL *IACAAIL IACAAI	13.23	ANQUETTE PARHAM	HEALTH & HUMAN SERVICES	HEALTH & HUMAN SERVICES	REGISTRATION 2025 IACAA ANNUAL CONFERENCE	5/4 - 5/6/25	SPRINGFIELD, IL
PAYPAL *IACAAIL IACAAI	13.23	ANQUETTE PARHAM	HEALTH & HUMAN SERVICES	HEALTH & HUMAN SERVICES	REGISTRATION 2025 IACAA ANNUAL CONFERENCE	5/4 - 5/6/25	SPRINGFIELD, IL
PAYPAL *IACAAIL IACAAI	13.23	ANQUETTE PARHAM	HEALTH & HUMAN SERVICES	HEALTH & HUMAN SERVICES	REGISTRATION 2025 IACAA ANNUAL CONFERENCE	5/4 - 5/6/25	SPRINGFIELD, IL
PAYPAL *IACAAIL IACAAI	19.85	ANQUETTE PARHAM	HEALTH & HUMAN SERVICES	HEALTH & HUMAN SERVICES	REGISTRATION 2025 IACAA ANNUAL CONFERENCE	5/4 - 5/6/25	SPRINGFIELD, IL
PAYPAL *IACAAIL IACAAI	33.08	ANQUETTE PARHAM	HEALTH & HUMAN SERVICES	HEALTH & HUMAN SERVICES	REGISTRATION 2025 IACAA ANNUAL CONFERENCE	5/4 - 5/6/25	SPRINGFIELD, IL
PAYPAL *IACAAIL IACAAI	6.62	ANQUETTE PARHAM	HEALTH & HUMAN SERVICES	HEALTH & HUMAN SERVICES	REGISTRATION 2025 IACAA ANNUAL CONFERENCE	5/4 - 5/6/25	SPRINGFIELD, IL
MENTAL HEALTH AMERICA	700.00	SHURICE HUNTER	HUMAN RESOURCES	GENERAL FUND	MENTAL HEALTH TRAINING	10/16-10/17/25	WASHINGTON DC
MENTAL HEALTH AMERICA	700.00	STEPHANIE MATHEWS	HUMAN RESOURCES	GENERAL FUND	MENTAL HEALTH TRAINING	10/16-10/17/25	WASHINGTON DC
PELRA* IL	225.00	SHURICE HUNTER	HUMAN RESOURCES	GENERAL FUND	2025 IPELRA - AN INVESTIGATOR'S MINDSET & RESPONSIBILITIES	04/17/2025	YORKVILLE, IL
SCHNUCKS ROCKFORD PLAZA	17.68	COR STAFF	HUMAN RESOURCES	GENERAL FUND	REFRESHMENTS FOR MENTAL HEALTH TRAINING	3/18/25	ROCKFORD, IL
COURTYARD WASHINGTON C	555.40	THOMAS MCNAMARA	MAYOR'S OFFICE	GENERAL FUND	ALLIANCE FOR HOPE LEADERSHIP SUMMIT	03/4/25-03/6/25	WASHINGTON, DC
COURTYARD WASHINGTON C	520.62	THOMAS MCNAMARA	MAYOR'S OFFICE	GENERAL FUND	ALLIANCE FOR HOPE LEADERSHIP SUMMIT	03/4/25-03/6/25	WASHINGTON, DC
CROWNE PLAZA SPRINGFIELD	250.80	ROBERT REFFETT	POLICE	GENERAL FUND	HOTEL FOR ILEAS CONFERENCE	3/30-4/1/25	SPRINGFIELD, IL
COURTYARD WASHINGTON C	1,566.49	ANDREA CARLSON	POLICE	GENERAL FUND	ALLIANCE FOR HOPE LEADERSHIP SUMMIT	03/02/25-03/6/25	WASHINGTON, DC
COURTYARD WASHINGTON C	2,041.10	JENNIFER CACCIAPAGLIA	POLICE	GENERAL FUND	ALLIANCE FOR HOPE LEADERSHIP SUMMIT	03/02/25-03/6/25	WASHINGTON, DC
FBI LEEDA INC	795.00	MISIASZEK, MARIUSZ	POLICE	GENERAL FUND	REGISTRATION FOR FBI-LEEDA	03/10-03/14/2025	ROSEMONT, IL
HYATT REGENCY LISLE	122.88	WALKER, NOLAN	POLICE	GENERAL FUND	HOTEL FOR COVERT SURVEILLANCE COURSE	03/05-03/07/2025	GLEN ELLYN, IL
FBI LEEDA INC	795.00	STEWART, MICHELLE	POLICE	GENERAL FUND	REGISTRATION FOR FBI-LEEDA	04/14-04/18/2025	OSWEGO, IL
SQ *NATIONAL TACTICAL OFF	311.00	PRESLEY, JAMES, LAKE	POLICE	GENERAL FUND	REGISTRATION FOR NTOA TRAINING	04/09-04/10/2025	ST. LOUIS, MO
HYATT REGENCY LISLE	122.88	WALKER, NOLAN	POLICE	GENERAL FUND	HOTEL FOR COVERT SURVEILLANCE COURSE	03/05-03/07/2025	GLEN ELLYN, IL
NU CPS REGISTRATION	995.00	MURPHY, AARON	POLICE	GENERAL FUND	REGISTRATION FOR NUCPS VEHICLE DYNAMICS COURSE	04/07-04/11/2025	LAKE ZURICH, IL
NU CPS REGISTRATION	1,295.00	MURPHY, AARON	POLICE	GENERAL FUND	REGISTRATION FOR NUCPS TRAFFIC CRASH RECONSTRUCTION 1 COURSE	04/14-04/25/2025	LAKE ZURICH, IL

MERCHANT	AMOUNT	EMPLOYEE	DEPARTMENT	FUND	TRAINING	DATES	LOCATION
NU CPS REGISTRATION	1,295.00	MURPHY, AARON	POLICE	GENERAL FUND	REGISTRATION FOR NUCPS TRAFFIC CRASH RECONSTRUCTION 2 COURSE	04/28-05/09/2025	LAKE ZURICH, IL
PAYPAL *MIDWESTGANG	325.00	WALKER, NOLAN	POLICE	GENERAL FUND	REGISTRATION FOR MIDWEST GANG INVESTIGATORS CONFERNECE	05/04-05/07/2025	LANSING, MI
PAYPAL *MIDWESTGANG	325.00	CERASA, DAVID	POLICE	GENERAL FUND	REGISTRATION FOR MIDWEST GANG INVESTIGATORS CONFERNECE	05/04-05/07/2025	LANSING, MI
PAYPAL *MIDWESTGANG	325.00	BOONE, D'EVYRON	POLICE	GENERAL FUND	REGISTRATION FOR MIDWEST GANG INVESTIGATORS CONFERNECE	05/04-05/07/2025	LANSING, MI
CVENT* 2025 LEIU/IALEI	650.00	ADAMS, JOCELYN	POLICE	GENERAL FUND	REGISTRATION FOR 2025 LEIU/IALEIA CONFERENCE	04/07-04/11/2025	VANCOUVER, BRITISH COLUMBIA, CANADA
COACH USA INC	67.20	ADAMS, JOCELYN	POLICE	GENERAL FUND	BUS TICKET FOR 2025 LEIU/IALEIA CONFERENCE	04/07-04/11/2025	VANCOUVER, BRITISH COLUMBIA, CANADA
UNITED 0162467970036	898.28	ADAMS, JOCELYN	POLICE	GENERAL FUND	FLIGHT FOR 2025 LEIU/IALEIA CONFERENCE	04/07-04/11/2025	VANCOUVER, BRITISH COLUMBIA, CANADA
PAYPAL *MIDWESTGANG	325.00	CERASA, DAVID	POLICE	GENERAL FUND	REGISTRATION FOR MIDWEST GANG INVESTIGATORS CONFERNECE	05/04-05/07/2025	LANSING, MI
PAYPAL *MIDWESTGANG	325.00	BOONE, D'EVYRON	POLICE	GENERAL FUND	REGISTRATION FOR MIDWEST GANG INVESTIGATORS CONFERNECE	05/04-05/07/2025	LANSING, MI
ILLINOIS TACTICAL OFFI	440.00	CASE, KEVIN	POLICE	GENERAL FUND	REGISTRATION FOR ITOA COURSE	04/14-04/16/2025	JOLIET, IL
AMERICAN AIR0012223650009	251.96	SARANTOPOULOS, APOSTOLOS	POLICE	GENERAL FUND	FLIGHT FOR CRIME AGAINST WOMEN CONFERNECE	05/19-05/22/2025	DALLAS, TX
CONFERENCE ON CRIMES AGAI	675.00	SARANTOPOULOS, APOSTOLOS	POLICE	GENERAL FUND	REGISTRATION FOR CRIME AGAINST WOMEN CONFERNECE	05/19-05/22/2025	DALLAS, TX
GRACIE UNIV	1,500.00	GEIKEN, JESSE	POLICE	GENERAL FUND	REGISTRATION FOR GRACIE SURVIVAL TACTICS CERTIFICATION COURSE	06/16-06/20/2025	RACINE, WI
UNITED 0162469798489	368.97	WATTON, DANIEL	POLICE	GENERAL FUND	FLIGHT FOR NATIONAL LAW ENFORCEMENT MEMORIAL EVENTS	05/10-05/15/2025	WASHINGTON, DC
UNITED 0162469798490	368.97	SQUIRES, BRIAN	POLICE	GENERAL FUND	FLIGHT FOR NATIONAL LAW ENFORCEMENT MEMORIAL EVENTS	05/10-05/15/2025	WASHINGTON, DC
UNITED 0162469798491	368.97	VARGAS, JONATHAN	POLICE	GENERAL FUND	FLIGHT FOR NATIONAL LAW ENFORCEMENT MEMORIAL EVENTS	05/10-05/15/2025	WASHINGTON, DC
UNITED 0162469798492	368.97	HORMIG, KELLY	POLICE	GENERAL FUND	FLIGHT FOR NATIONAL LAW ENFORCEMENT MEMORIAL EVENTS	05/10-05/15/2025	WASHINGTON, DC
UNITED 0162469798493	368.97	WOODS, SHERRELL	POLICE	GENERAL FUND	FLIGHT FOR NATIONAL LAW ENFORCEMENT MEMORIAL EVENTS	05/10-05/15/2025	WASHINGTON, DC
UNITED 0162469798494	368.97	KIELY, GARY	POLICE	GENERAL FUND	FLIGHT FOR NATIONAL LAW ENFORCEMENT MEMORIAL EVENTS	05/10-05/15/2025	WASHINGTON, DC
UNITED 0164481360300	35.00	WATTON, DANIEL	POLICE	GENERAL FUND	LUGGAGE FOR NATIONAL LAW ENFORCEMENT MEMORIAL EVENTS	05/10-05/15/2025	WASHINGTON, DC
UNITED 0164481360301	45.00	WATTON, DANIEL	POLICE	GENERAL FUND	LUGGAGE FOR NATIONAL LAW ENFORCEMENT MEMORIAL EVENTS	05/10-05/15/2025	WASHINGTON, DC
UNITED 0164481360302	35.00	SQUIRES, BRIAN	POLICE	GENERAL FUND	LUGGAGE FOR NATIONAL LAW ENFORCEMENT MEMORIAL EVENTS	05/10-05/15/2025	WASHINGTON, DC
UNITED 0164481360303	45.00	SQUIRES, BRIAN	POLICE	GENERAL FUND	LUGGAGE FOR NATIONAL LAW ENFORCEMENT MEMORIAL EVENTS	05/10-05/15/2025	WASHINGTON, DC
UNITED 0164481360304	35.00	VARGAS, JONATHAN	POLICE	GENERAL FUND	LUGGAGE FOR NATIONAL LAW ENFORCEMENT MEMORIAL EVENTS	05/10-05/15/2025	WASHINGTON, DC
UNITED 0164481360305	45.00	VARGAS, JONATHAN	POLICE	GENERAL FUND	LUGGAGE FOR NATIONAL LAW ENFORCEMENT MEMORIAL EVENTS	05/10-05/15/2025	WASHINGTON, DC
UNITED 0164481360306	35.00	HORMIG, KELLY	POLICE	GENERAL FUND	LUGGAGE FOR NATIONAL LAW ENFORCEMENT MEMORIAL EVENTS	05/10-05/15/2025	WASHINGTON, DC
UNITED 0164481360307	45.00	HORMIG, KELLY	POLICE	GENERAL FUND	LUGGAGE FOR NATIONAL LAW ENFORCEMENT MEMORIAL EVENTS	05/10-05/15/2025	WASHINGTON, DC
UNITED 0164481360308	35.00	WOODS, SHERRELL	POLICE	GENERAL FUND	LUGGAGE FOR NATIONAL LAW ENFORCEMENT MEMORIAL EVENTS	05/10-05/15/2025	WASHINGTON, DC
UNITED 0164481360309	45.00	WOODS, SHERRELL	POLICE	GENERAL FUND	LUGGAGE FOR NATIONAL LAW ENFORCEMENT MEMORIAL EVENTS	05/10-05/15/2025	WASHINGTON, DC
UNITED 0164481360310	35.00	KIELY, GARY	POLICE	GENERAL FUND	LUGGAGE FOR NATIONAL LAW ENFORCEMENT MEMORIAL EVENTS	05/10-05/15/2025	WASHINGTON, DC
UNITED 0164481360311	45.00	KIELY, GARY	POLICE	GENERAL FUND	LUGGAGE FOR NATIONAL LAW ENFORCEMENT MEMORIAL EVENTS	05/10-05/15/2025	WASHINGTON, DC
UNITED 0164481360312	35.00	WATTON, DANIEL	POLICE	GENERAL FUND	LUGGAGE FOR NATIONAL LAW ENFORCEMENT MEMORIAL EVENTS	05/10-05/15/2025	WASHINGTON, DC
UNITED 0164481360313	45.00	WATTON, DANIEL	POLICE	GENERAL FUND	LUGGAGE FOR NATIONAL LAW ENFORCEMENT MEMORIAL EVENTS	05/10-05/15/2025	WASHINGTON, DC
UNITED 0164481360314	35.00	SQUIRES, BRIAN	POLICE	GENERAL FUND	LUGGAGE FOR NATIONAL LAW ENFORCEMENT MEMORIAL EVENTS	05/10-05/15/2025	WASHINGTON, DC
UNITED 0164481360315	45.00	SQUIRES, BRIAN	POLICE	GENERAL FUND	LUGGAGE FOR NATIONAL LAW ENFORCEMENT MEMORIAL EVENTS	05/10-05/15/2025	WASHINGTON, DC
UNITED 0164481360316	35.00	VARGAS, JONATHAN	POLICE	GENERAL FUND	LUGGAGE FOR NATIONAL LAW ENFORCEMENT MEMORIAL EVENTS	05/10-05/15/2025	WASHINGTON, DC
UNITED 0164481360317	45.00	VARGAS, JONATHAN	POLICE	GENERAL FUND	LUGGAGE FOR NATIONAL LAW ENFORCEMENT MEMORIAL EVENTS	05/10-05/15/2025	WASHINGTON, DC
UNITED 0164481360318	35.00	HORMIG, KELLY	POLICE	GENERAL FUND	LUGGAGE FOR NATIONAL LAW ENFORCEMENT MEMORIAL EVENTS	05/10-05/15/2025	WASHINGTON, DC
UNITED 0164481360319	45.00	HORMIG, KELLY	POLICE	GENERAL FUND	LUGGAGE FOR NATIONAL LAW ENFORCEMENT MEMORIAL EVENTS	05/10-05/15/2025	WASHINGTON, DC
UNITED 0164481360320	35.00	WOODS, SHERRELL	POLICE	GENERAL FUND	LUGGAGE FOR NATIONAL LAW ENFORCEMENT MEMORIAL EVENTS	05/10-05/15/2025	WASHINGTON, DC
UNITED 0164481360321	45.00	WOODS, SHERRELL	POLICE	GENERAL FUND	LUGGAGE FOR NATIONAL LAW ENFORCEMENT MEMORIAL EVENTS	05/10-05/15/2025	WASHINGTON, DC
UNITED 0164481360322	35.00	KIELY, GARY	POLICE	GENERAL FUND	LUGGAGE FOR NATIONAL LAW ENFORCEMENT MEMORIAL EVENTS	05/10-05/15/2025	WASHINGTON, DC
UNITED 0164481360323	45.00	KIELY, GARY	POLICE	GENERAL FUND	LUGGAGE FOR NATIONAL LAW ENFORCEMENT MEMORIAL EVENTS	05/10-05/15/2025	WASHINGTON, DC
AP020 - PF O'HARE ONLINE	66.00	REDD, CARLA	POLICE	GENERAL FUND	PRE-FLIGHT PARKING FOR MIDWEST REGIONAL MAIG SUMMIT	03/27-03/28/2025	CLEVELAND, OH
MOVEMENTFORWARD, INC.	399.00	GALLAGHER, PAUL	POLICE	GENERAL FUND	REGISTRATION FOR PLECET NATIONAL CONFERENCE	06/04-06/07/2025	CHICAGO, IL
MOVEMENTFORWARD, INC.	399.00	TILMON-LISTHROP, COURTNEY	POLICE	GENERAL FUND	REGISTRATION FOR PLECET NATIONAL CONFERENCE	06/04-06/07/2025	CHICAGO, IL
MOVEMENTFORWARD, INC.	399.00	WOODS, SHERRELL	POLICE	GENERAL FUND	REGISTRATION FOR PLECET NATIONAL CONFERENCE	06/04-06/07/2025	CHICAGO, IL
MOVEMENTFORWARD, INC.	399.00	SEALE, ANDREW	POLICE	GENERAL FUND	REGISTRATION FOR PLECET NATIONAL CONFERENCE	06/04-06/07/2025	CHICAGO, IL
MOVEMENTFORWARD, INC.	399.00	TURNER, PATRICE	POLICE	GENERAL FUND	REGISTRATION FOR PLECET NATIONAL CONFERENCE	06/04-06/07/2025	CHICAGO, IL
PAYPAL *TACTICALENE	925.00	GRACEFFA, JUSTIN	POLICE	GENERAL FUND	REGISTRATION FOR TEES COURSE	08/11-08/14/2025	BYHALIA, MS
HTL*FAIRFIELDINNSU	480.24	GRACEFFA, JUSTIN	POLICE	GENERAL FUND	HOTEL FOR TEES COURSE	08/11-08/14/2025	BYHALIA, MS
RESIDENCEINN BY MARRIO	246.40	BEN DAHLMEIER	TRAFFIC	GENERAL FUND	HOTEL FOR IMSA WORK ZONE & TRAFFIC SIGNAL TECH LEVEL 1	3/10/25-3/12/25	DAVENPORT, IA
RESIDENCEINN BY MARRIO	246.40	JUSTIN PIRRIE	TRAFFIC	GENERAL FUND	HOTEL FOR IMSA WORK ZONE & TRAFFIC SIGNAL TECH LEVEL 1	3/10/25-3/12/25	DAVENPORT, IA
ABOUT PHASE ACADEMY	1,125.00	NATHAN WOLF, BRIAN HEDRINGTON, BOB REVER	TRAFFIC	GENERAL FUND	IMSA SIGNS & PAVEMENT MARKINGS TECH 1 RENEWAL	4/14/25	ONLINE
ILLINOIS AWWA	150.00	KEVIN LUNDGREN	WATER	WATER	WATERCON 2025	4/16/25	PEORIA
ILLINOIS AWWA	28.00	KEVIN LUNDGREN	WATER	WATER	WATER DISTRIBUTION SYSTEM HYDRAULIC MODELING 101 - AN INTRODUCTION	4/3/25	VIRTUAL
ILLINOIS AWWA	109.00	KEVIN LUNDGREN	WATER	WATER	WATER LEAK DETECTION	4/17/25	LOVES PARK
BANK OF SPRINGFIELD CTR	1.00	JAMIE ROTT	WATER	WATER	PARKING FOR ISAWWA MEETING	3/4/25	SPRINGFIELD, IL
ILLINOIS AWWA	450.00	MIKE NORRIS	WATER	WATER	ISAWWA WATERCON 2025	4/14/25 - 4/16/25	PEORIA, IL
<b>TOTAL</b>	<b>39,233.42</b>		<b>Apr-25</b>				