



DATE: September 22, 2025

TO: Mayor McNamara
City Council

FROM: Carrie Hagerty, Finance Director

RE: Financial Discussion – August 2025

The monthly report provides information on General Fund revenue and expense performance through August 2025. The 2025 budget was approved with expenses of \$226.25 and revenues at \$226.3 million. The report also includes performance of major revenue sources for the Redevelopment funds and capital improvement program.

GENERAL FUND REVENUE PERFORMANCE

YEAR-TO-DATE FINANCIAL REPORT AS OF AUGUST 31, 2025

| | 8/31/2024 ACTUAL YTD | 8/31/2025 ACTUAL YTD | YTD EXPECTED REVENUE | YTD OVER (UNDER) BUDGET | YTD OVER (UNDER) PERCENT | PROJECTED ANNUAL REVENUE | 2025 ANNUAL BUDGET | PROJECTED OVER (UNDER) BUDGET | PROJECTED OVER (UNDER) PERCENT |
|--------------------------------------|----------------------------|----------------------------|----------------------------|----------------------------------|-----------------------------------|--------------------------------|--------------------------|--|---|
| MAJOR REVENUES | | | | | | | | | |
| PROPERTY TAXES | 29,283,873 | 30,565,205 | 30,565,205 | - | 0.0% | 47,760,958 | 47,760,958 | - | 0.0% |
| SALES TAX (6 of 12 payments) | 15,451,267 | 17,556,010 | 16,180,296 | 1,375,714 | 8.5% | 35,065,714 | 33,690,000 | 1,375,714 | 4.1% |
| USE TAX (7 of 12 payments) | 3,201,144 | 1,234,231 | 2,641,500 | (1,407,269) | -53.3% | 3,092,731 | 4,500,000 | (1,407,269) | -31.3% |
| INCOME TAX (7 of 12 payments) | 14,882,269 | 15,880,240 | 15,312,000 | 568,240 | 3.7% | 26,968,240 | 26,400,000 | 568,240 | 2.2% |
| PHONE UTILITY TAX (6 of 12 payments) | 1,034,720 | 1,058,516 | 965,960 | 92,556 | 9.6% | 1,992,556 | 1,900,000 | 92,556 | 4.9% |
| REPLACEMENT TAX (6 of 8 payments) | 10,521,722 | 7,300,496 | 12,373,882 | (5,073,386) | -41.0% | 10,950,392 | 16,023,778 | (5,073,386) | -31.7% |
| TOTAL MAJOR REVENUES | 74,374,995 | 73,594,698 | 78,038,843 | (4,444,145) | -5.7% | 125,830,591 | 130,274,736 | (4,444,145) | -3.4% |
| OTHER REVENUES | | | | | | | | | |
| LICENSES AND INSPECTIONS | 4,912,490 | 4,707,074 | 4,610,667 | 96,407 | 2.1% | 7,012,407 | 6,916,000 | 96,407 | 1.4% |
| UTILITY TAXES | 5,601,712 | 7,865,203 | 8,466,667 | (601,464) | -7.1% | 12,098,536 | 12,700,000 | (601,464) | -4.7% |
| OTHER TAX | 1,961,512 | 234,631 | 246,667 | (12,035) | -4.9% | 357,965 | 370,000 | (12,035) | -3.3% |
| INTERGOVERNMENTAL | 14,685,894 | 6,822,857 | 6,006,465 | 816,392 | 13.6% | 9,826,090 | 9,009,698 | 816,392 | 9.1% |
| CHARGES FOR SERVICES | 21,909,084 | 24,939,690 | 23,859,040 | 1,080,650 | 4.5% | 36,869,210 | 35,788,560 | 1,080,650 | 3.0% |
| FINES | 633,469 | 673,127 | 820,000 | (146,873) | -17.9% | 1,083,127 | 1,230,000 | (146,873) | -11.9% |
| MISCELLANEOUS | 7,565,775 | 6,113,387 | 4,733,667 | 1,379,720 | 29.1% | 8,480,220 | 7,100,500 | 1,379,720 | 19.4% |
| REIMBURSEMENT FOR SERVICES | 4,159,853 | 15,184,259 | 15,272,171 | (87,912) | -0.6% | 22,908,256 | 22,908,256 | - | 0.0% |
| TOTAL OTHER REVENUES | 61,429,788 | 66,540,228 | 64,015,343 | 2,524,885 | 3.9% | 98,635,811 | 96,023,014 | 2,612,797 | 2.7% |
| TOTAL REVENUES | 135,804,784 | 140,134,926 | 142,054,186 | (1,919,260) | -1.4% | 224,466,402 | 226,297,750 | (1,831,348) | -0.8% |

Statewide revenues, including use tax and replacement tax are under budget after six to seven months disbursement, while income tax is over budget. Sales tax and phone utility tax are over budget after six months disbursement. The first significant property tax disbursement was received in July. As expected, replacement tax and use tax continue to underperform and we will monitor these revenue sources throughout the year. A number of the other revenue sources are showing under budget due to timing of receipts, while miscellaneous and charges for services revenues are over budget resulting in other revenues being under budget 1.4%. The fire shop generated \$7,611 in revenue for mechanical work performed for outside agencies in August. 911 Division generated \$20,215 in revenue for 911 dispatch fees in August.

GENERAL FUND EXPENSE PERFORMANCE

| | 8/31/2024 ACTUAL YTD | 8/31/2025 ACTUAL YTD | YTD EXPECTED EXPENSE | YTD (OVER) UNDER BUDGET | YTD (OVER) UNDER PERCENT | PROJECTED ANNUAL EXPENSE | 2025 ANNUAL BUDGET | PROJECTED (OVER) UNDER BUDGET | PROJECTED (OVER) UNDER PERCENT |
|---------------------------------|----------------------------|----------------------------|----------------------------|----------------------------------|-----------------------------------|--------------------------------|--------------------------|--|---|
| MAYOR | 631,288 | 698,365 | 710,595 | 12,230 | 1.7% | 1,047,548 | 1,065,892 | 18,345 | 1.7% |
| COUNCIL | 318,690 | 355,858 | 358,825 | 2,967 | 0.8% | 533,787 | 538,237 | 4,450 | 0.8% |
| LEGAL | 1,510,504 | 1,382,433 | 1,759,207 | 376,774 | 21.4% | 2,073,650 | 2,638,811 | 565,162 | 21.4% |
| FINANCE | 5,250,824 | 6,328,008 | 6,802,609 | 474,601 | 7.0% | 9,492,012 | 10,203,914 | 711,902 | 7.0% |
| POLICE | 52,579,198 | 54,655,355 | 59,451,980 | 4,796,625 | 8.1% | 83,183,033 | 89,177,970 | 5,994,938 | 6.7% |
| FIRE | 45,875,196 | 48,072,119 | 52,483,165 | 4,411,046 | 8.4% | 78,108,179 | 78,724,747 | 616,569 | 0.8% |
| PUBLIC WORKS | 13,387,460 | 13,211,551 | 14,575,981 | 1,364,430 | 9.4% | 19,817,327 | 21,863,971 | 2,046,645 | 9.4% |
| COMMUNITY & ECONOMIC DEVELOPMEI | 9,971,667 | 11,802,818 | 11,910,367 | 107,549 | 0.9% | 17,704,227 | 17,865,550 | 161,323 | 0.9% |
| FIRE & POLICE COMMISSION | 99,873 | 138,472 | 209,475 | 71,003 | 33.9% | 207,708 | 314,213 | 106,505 | 33.9% |
| ELECTION COMMISSION | 543,993 | 827,611 | 1,034,004 | 206,393 | 20.0% | 1,551,006 | 1,551,006 | - | 0.0% |
| HUMAN RESOURCES | 808,233 | 791,877 | 1,016,591 | 224,714 | 22.1% | 1,187,816 | 1,524,886 | 337,071 | 22.1% |
| WORKFORCE INVESTMENT BOARD | 498,945 | 610,947 | 523,242 | (87,705) | -16.8% | 784,863 | 784,863 | - | 0.0% |
| TOTAL EXPENDITURES | 131,475,871 | 138,875,414 | 150,836,040 | 11,960,626 | 7.9% | 215,691,153 | 226,254,060 | 10,562,907 | 4.7% |

Expenditures are at or under budget through eight months except for an overage in Workforce Investment Board. Highlights of expenses to date are outlined below, and detail by budget unit is attached to this memo.

Public Safety

-) Regular salaries for the Police Department are under budget. Overtime is over budget at \$3,350,227 or 106.7%, compared to \$2,984,146 for the same period last year.
-) Regular salaries for the Fire Department are under budget. Overtime is over budget at \$1,961,623 or 104.3%, compared to \$2,038,156 for the same period last year.
-) Regular salaries for the 911 Division are under budget. Overtime is over budget at \$658,500 or 115.1%.

Public Works

-) Snow and ice expenses total \$3,377,814 at the end of August, or 75.0% of the total budget.
-) Street Division overtime is under budget at \$81,415 or 32.6% of the total budget.
-) Road salt expenses through August total \$982,131, with \$817,869 remaining for future road salt purchases.
-) Pothole patching is under budget at \$627,159 or 40.5% of the total.
-) In the Traffic Division, street light electricity is estimated at \$1,625,950 or 79.9% and will continue to be monitored throughout the year.

CIP REVENUE PERFORMANCE

CITY OF ROCKFORD CAPITAL IMPROVEMENT FUND

YEAR-TO-DATE FINANCIAL REPORT AS OF AUGUST 31, 2025

| | 8/31/2024 ACTUAL YTD | 8/31/2025 ACTUAL YTD | YTD EXPECTED REVENUE | YTD OVER (UNDER) BUDGET | YTD OVER (UNDER) PERCENT | PROJECTED ANNUAL REVENUE | 2025 ANNUAL BUDGET | PROJECTED OVER (UNDER) BUDGET | PROJECTED OVER (UNDER) PERCENT |
|-----------------------------------|----------------------------|----------------------------|----------------------------|----------------------------------|-----------------------------------|--------------------------------|--------------------------|--|---|
| CIP SALES TAX (6 of 12 payments) | 10,733,755 | 11,967,575 | 10,702,382 | 1,265,193 | 11.8% | 23,608,370 | 22,343,177 | 1,265,193 | 5.7% |
| MOTOR FUEL TAX (8 of 12 payments) | 4,298,986 | 4,444,547 | 4,345,842 | 98,705 | 2.3% | 6,889,083 | 6,790,378 | 98,705 | 1.5% |
| TOTAL REVENUES | 15,032,741 | 16,412,122 | 15,048,224 | 1,363,898 | 9.1% | 30,497,453 | 29,133,555 | 1,363,898 | 4.7% |

CIP sales tax disbursements are over budget with six disbursements. Motor Fuel Tax receipts are over budget with eight disbursements received to date.

DEVELOPMENT FUNDS REVENUE PERFORMANCE

CITY OF ROCKFORD REDEVELOPMENT/TOURISM FUNDS

YEAR-TO-DATE FINANCIAL REPORT AS OF AUGUST 31, 2025

| | 8/31/2024 ACTUAL YTD | 8/31/2025 ACTUAL YTD | YTD EXPECTED REVENUE | YTD OVER (UNDER) BUDGET | YTD OVER (UNDER) PERCENT | PROJECTED ANNUAL REVENUE | 2025 ANNUAL BUDGET | PROJECTED OVER (UNDER) BUDGET | PROJECTED OVER (UNDER) PERCENT |
|-------------------------------------|----------------------------|----------------------------|----------------------------|----------------------------------|-----------------------------------|--------------------------------|--------------------------|--|---|
| REDEVELOPMENT FUND | | | | | | | | | |
| HOTEL/MOTEL TAX (8 of 12 months) | 1,901,545 | 2,124,569 | 1,873,859 | 250,710 | 13.4% | 3,322,610 | 3,071,900 | 250,710 | 8.2% |
| PACKAGE LIQUOR TAX (8 of 12 months) | 504,646 | 494,819 | 507,717 | (12,898) | -2.5% | 793,002 | 805,900 | (12,898) | -1.6% |
| RESTAURANT TAX (8 of 12 months) | 3,161,769 | 3,351,054 | 3,098,688 | 252,366 | 8.1% | 5,094,066 | 4,841,700 | 252,366 | 5.2% |
| TOTAL REVENUES | 5,567,960 | 5,970,442 | 5,480,264 | 490,178 | 8.9% | 9,209,678 | 8,719,500 | 490,178 | 5.6% |

Redevelopment Fund revenue is 8.9% over budget.

CASINO TAX REVENUE PERFORMANCE

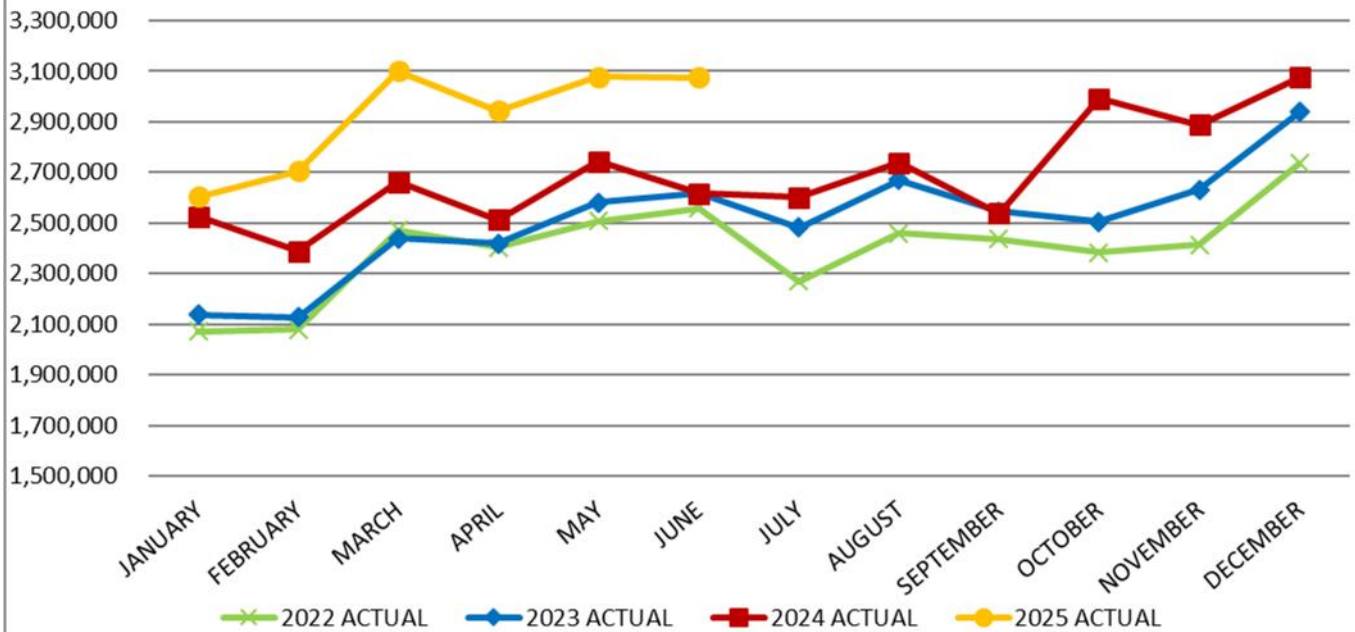
CITY OF ROCKFORD CASINO TAX FUND

YEAR-TO-DATE FINANCIAL REPORT AS OF AUGUST 31, 2025

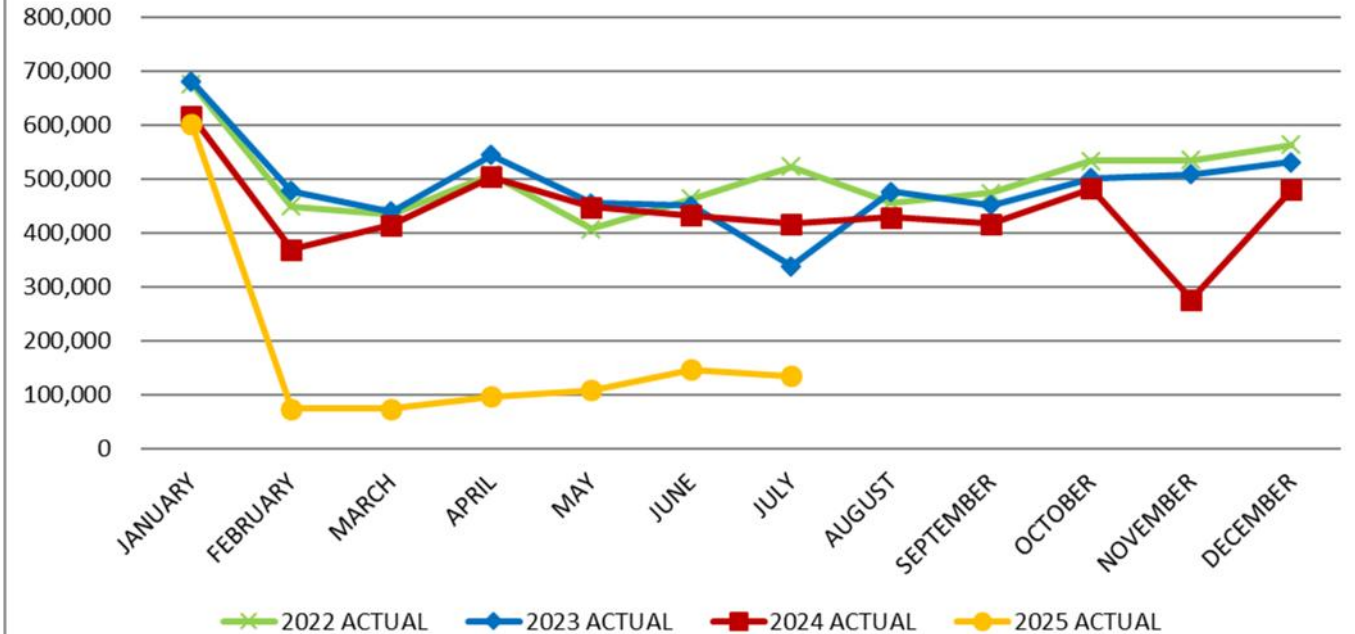
| | 8/31/2024 ACTUAL YTD | 8/31/2025 ACTUAL YTD | YTD EXPECTED REVENUE | YTD OVER (UNDER) BUDGET | YTD OVER (UNDER) PERCENT | PROJECTED ANNUAL REVENUE | BUDGET ANNUAL BUDGET | PROJECTED OVER (UNDER) BUDGET | PROJECTED OVER (UNDER) PERCENT |
|-------------------------------|----------------------------|----------------------------|----------------------------|----------------------------------|-----------------------------------|--------------------------------|----------------------------|--|---|
| CASINO TAX (7 OF 12 PAYMENTS) | 1,774,732 | 3,599,337 | 3,955,014 | (355,677) | -9.0% | 6,644,323 | 7,000,000 | (355,677) | -5.1% |
| TOTAL REVENUES | 1,774,732 | 3,599,337 | 3,955,014 | (355,677) | -9.0% | 6,644,323 | 7,000,000 | (355,677) | -5.1% |

Casino Tax Fund revenue is 9.0% under budget, however there is a guarantee of \$7,000,000.

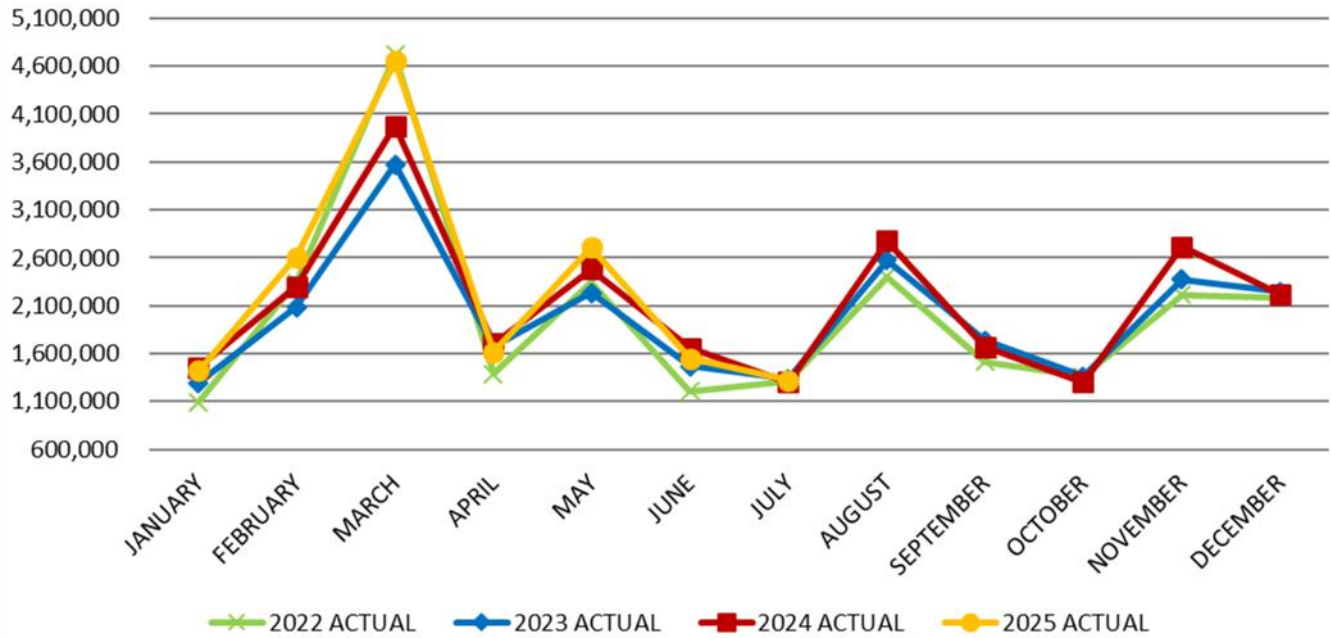
Sales Tax Actual Revenue



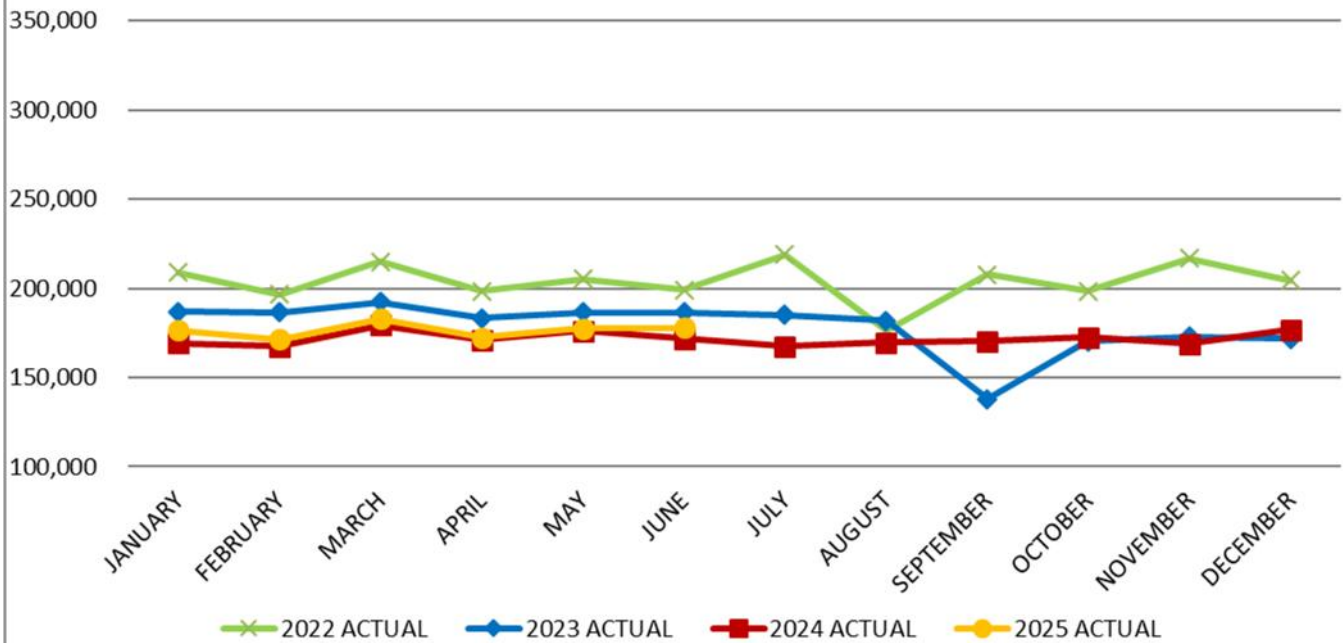
Use Tax Actual Revenue



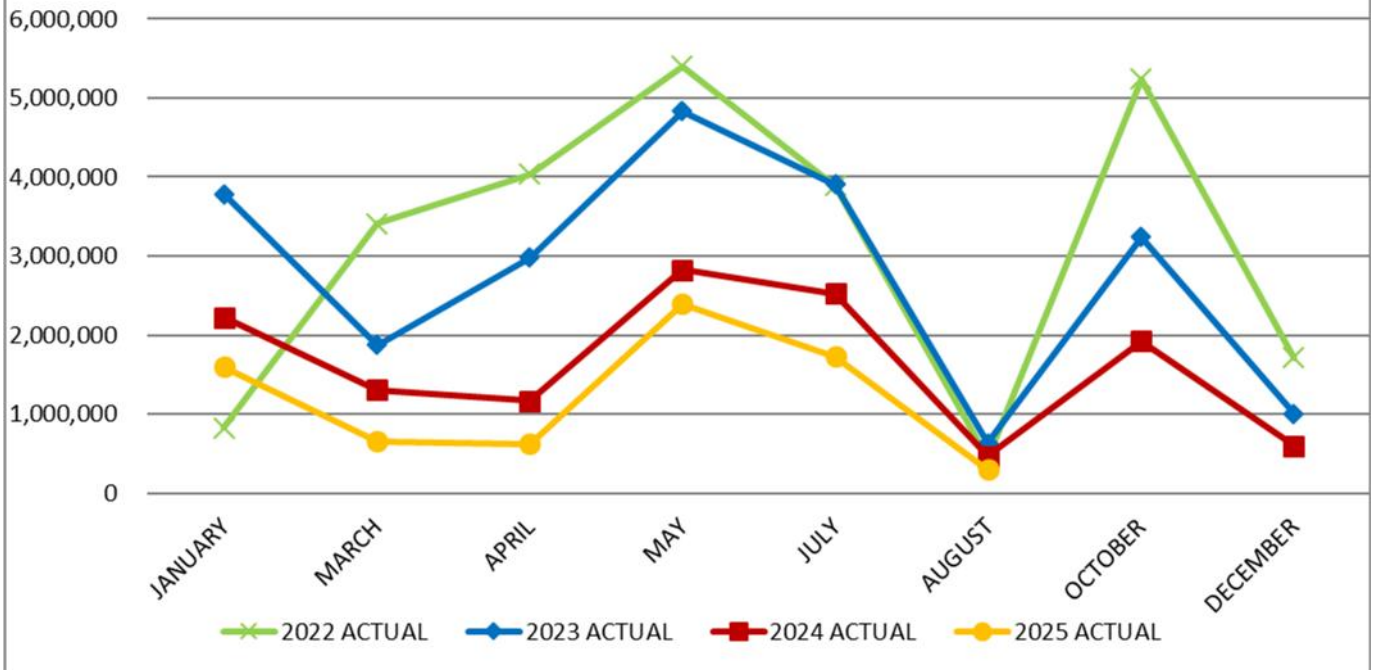
Income Tax Actual Revenue



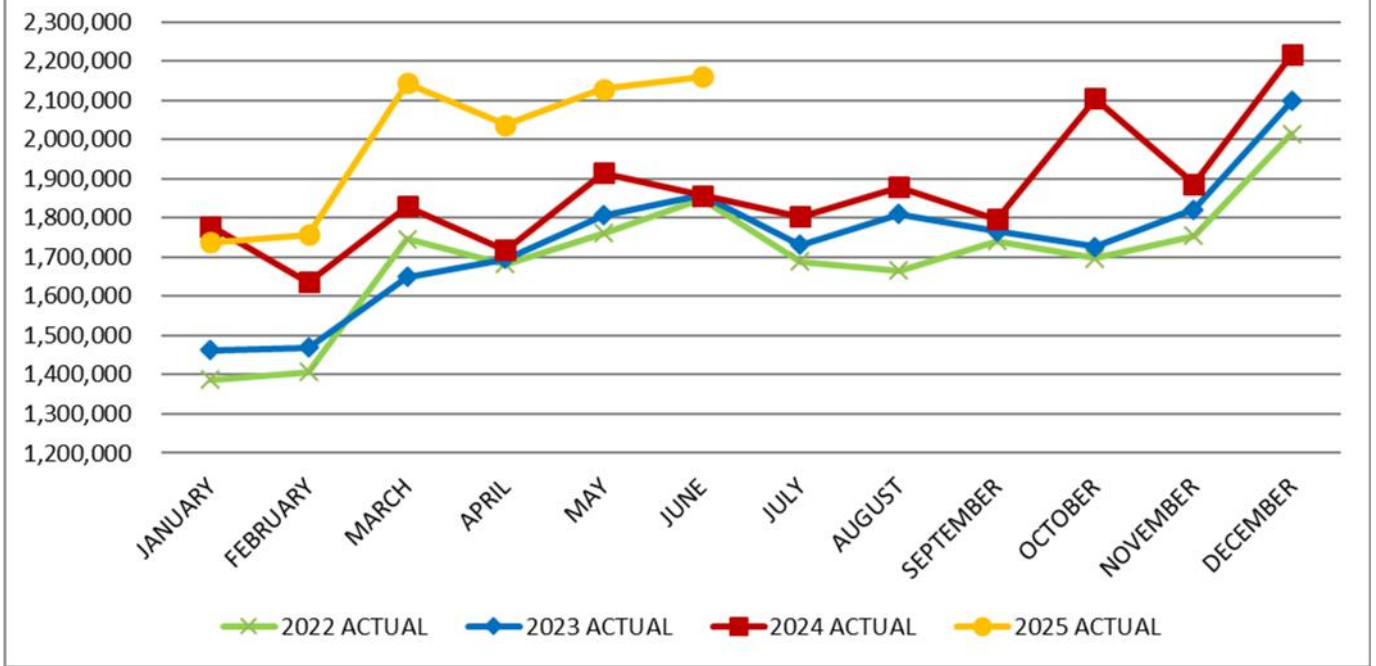
Phone Tax Actual Revenue



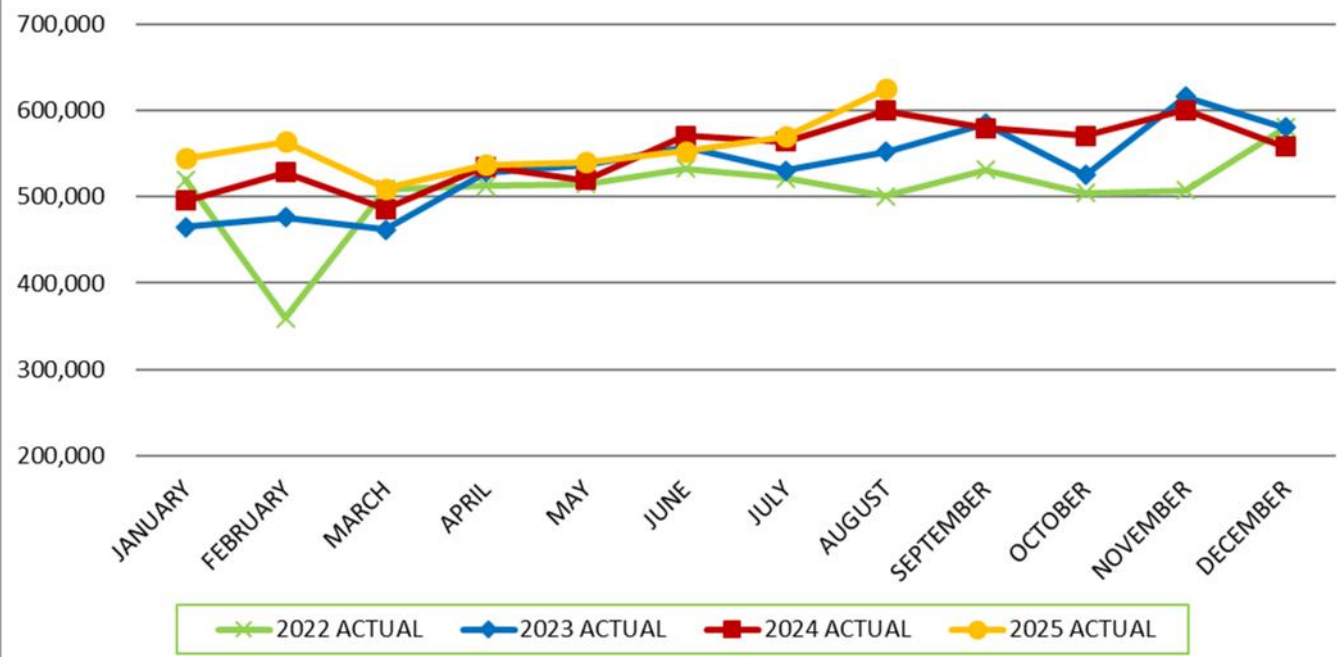
Replacement Tax Actual Revenue



CIP Sales Tax Actual Revenue



Motor Fuel Tax Actual Revenue



**YTD BUDGET REPORT
MAYOR'S OFFICE**

| | 2025 | 8/31/2025 | 66.7% PERCENT | AVAILABLE |
|---------------------------------|------------------|----------------|------------------|-----------------|
| ACCOUNT | BUDGET | EXPENDITURES | EXPENDED | BUDGET |
| 71112 SALARIES PERMANENT | 481,751 | 325,955 | 67.7% | 155,796 |
| 71113 SALARIES TEMPORARY | 30,000 | 2,312 | 7.7% | 27,688 |
| 71251 IMRF | 65,666 | 45,731 | 69.6% | 19,935 |
| 71253 UNEMPLOYMENT | 212 | 108 | 50.8% | 104 |
| 71262 WORKMEN'S COMPENSATION | 1,351 | 804 | 59.5% | 547 |
| 71263 HEALTH INSURANCE | 86,853 | 57,789 | 66.5% | 29,065 |
| 71264 LIFE INSURANCE | 440 | 139 | 31.5% | 301 |
| 71271 PARKING BENEFITS | 2,864 | 1,909 | 66.7% | 955 |
| 71292 CELL PHONE ALLOWANCE | - | 136 | 100.0% | (136) |
| TOTAL PERSONNEL | 669,137 | 434,882 | 65.0% | 234,255 |
| 72203 WIRELESS | 9,000 | 4,716 | 52.4% | 4,284 |
| 72204 TELEPHONE - VOIP | 2,490 | 1,660 | 66.7% | 830 |
| 72211 PRINTING & PUBLICATION | 2,000 | - | 0.0% | 2,000 |
| 72212 POSTAGE | 50 | - | 0.0% | 50 |
| 72214 TRAVEL | 2,500 | 3,578 | 143.1% | (1,078) |
| 72215 DUES | 8,500 | 964 | 11.3% | 7,537 |
| 72216 SUBSCRIPTIONS | 600 | 1,047 | 174.6% | (447) |
| 72264 VEHICLE REPAIRS | 3,210 | 4,137 | 128.9% | (927) |
| 72265 FUEL | 3,670 | 1,842 | 50.2% | 1,828 |
| 72267 RISK MANAGEMENT | 9,400 | 6,267 | 66.7% | 3,133 |
| 72271 RENTAL EQUIPMENT | 2,465 | 1,069 | 43.4% | 1,396 |
| 72272 RENTAL BUILDING | 159,180 | 106,250 | 66.7% | 52,930 |
| 72290 EDUCATION AND TRAINING | 2,000 | 268 | 13.4% | 1,732 |
| 72299 MISC CONTRACTUAL | 100,000 | 39,568 | 39.6% | 60,432 |
| TOTAL CONTRACTUAL | 362,255 | 209,492 | 57.8% | 152,763 |
| 75525 FOOD | 9,500 | 5,177 | 54.5% | 4,323 |
| 75560 OFFICE GENERAL SUPPLIES | 5,000 | 1,200 | 24.0% | 3,800 |
| 75561 PHOTOGRAPHY & REPRODUCTN | - | 1,952 | 100.0% | (1,952) |
| 75569 MISCELLANEOUS SUPPLIES | 20,000 | 25 | 0.1% | 19,975 |
| TOTAL SUPPLIES | 34,500 | 8,354 | 24.2% | 26,146 |
| 79922 VEHICLE & OPERATING EQUIP | - | 45,637 | 100.0% | (45,637) |
| TOTAL CAPITAL | 0 | 45,637 | 100.0% | (45,637) |
| TOTAL MAYOR'S OFFICE | 1,065,892 | 698,365 | 65.5% | 367,527 |

**YTD BUDGET REPORT
CITY COUNCIL**

| ACCOUNT | 2025 BUDGET | 8/31/2025 EXPENDITURES | 66.7% | AVAILABLE BUDGET |
|-------------------------------|----------------|---------------------------|---------------------|---------------------|
| | | | PERCENT EXPENDED | |
| 71112 SALARIES PERMANENT | 168,000 | 133,371 | 79.4% | 34,629 |
| 71113 SALARIES TEMPORARY | 350 | - | 0.0% | 350 |
| 71251 IMRF | 22,904 | 11,569 | 50.5% | 11,335 |
| 71263 HEALTH INSURANCE | 120,458 | 86,541 | 71.8% | 33,917 |
| 71264 LIFE INSURANCE | 1,540 | 224 | 14.6% | 1,316 |
| 71271 PARKING BENEFITS | 10,024 | 6,683 | 66.7% | 3,341 |
| TOTAL PERSONNEL | 323,276 | 238,388 | 73.7% | 84,888 |
| 72203 WIRELESS | 9,000 | 3,516 | 39.1% | 5,484 |
| 72211 PRINTING | 300 | 320 | 106.7% | (20) |
| 72214 TRAVEL | 5,000 | - | 0.0% | 5,000 |
| 72218 SERVICE CONTRACTS | 120,000 | 60,000 | 50.0% | 60,000 |
| 72263 MICROCOMPUTER | 3,960 | 2,640 | 66.7% | 1,320 |
| 72267 RISK MANAGEMENT | 1,445 | 963 | 66.7% | 482 |
| 72272 RENTAL BUILDING | 65,040 | 43,360 | 66.7% | 21,680 |
| 72290 EDUCATION AND TRAINING | 3,500 | 250 | 7.1% | 3,250 |
| TOTAL CONTRACTUAL | 208,245 | 111,049 | 53.3% | 97,196 |
| 75525 FOOD | 5,000 | 1,720 | 34.4% | 3,280 |
| 75560 OFFICE GENERAL SUPPLIES | 716 | - | 0.0% | 716 |
| 75569 MISCELLANEOUS SUPPLIES | 1,000 | - | 0.0% | 1,000 |
| 75570 COMPUTER NONCAPITAL | - | 4,700 | 100.0% | (4,700) |
| TOTAL SUPPLIES | 6,716 | 6,421 | 95.6% | 295 |
| TOTAL CITY COUNCIL | 538,237 | 355,858 | 66.1% | 182,379 |

**YTD BUDGET REPORT
LEGAL DEPARTMENT**

| | 2025 | 8/31/2025 | 66.7% | |
|---------------------------------|------------------|------------------|---------------------|---------------------|
| ACCOUNT | BUDGET | EXPENDITURES | PERCENT EXPENDED | AVAILABLE BUDGET |
| 71112 SALARIES PERMANENT | 1,322,119 | 800,676 | 60.6% | 521,443 |
| 71113 SALARIES TEMPORARY | 31,500 | 17,165 | 54.5% | 14,335 |
| 71122 SALARIES OVERTIME PERM | 41,004 | 7 | 0.0% | 40,997 |
| 71251 IMRF | 185,059 | 112,765 | 60.9% | 72,294 |
| 71253 UNEMPLOYMENT | 778 | 509 | 65.4% | 269 |
| 71262 WORKMEN'S COMPENSATION | 3,814 | 2,291 | 60.1% | 1,523 |
| 71263 HEALTH INSURANCE | 354,498 | 210,938 | 59.5% | 143,561 |
| 71264 LIFE INSURANCE | 1,599 | 465 | 29.1% | 1,134 |
| 71271 PARKING BENEFITS | 10,388 | 6,925 | 66.7% | 3,463 |
| 71292 CELL PHONE ALLOWANCE | 884 | 289 | 32.7% | 595 |
| TOTAL PERSONNEL | 1,951,643 | 1,152,029 | 59.0% | 799,614 |
| 72203 WIRELESS | 8,500 | 4,074 | 47.9% | 4,426 |
| 72204 TELEPHONE VOIP | 7,470 | 4,980 | 66.7% | 2,490 |
| 72211 PRINTING & PUBLICATION | 4,200 | 2,600 | 61.9% | 1,600 |
| 72212 POSTAGE | 700 | 214 | 30.6% | 486 |
| 72214 TRAVEL | 1,710 | - | 0.0% | 1,710 |
| 72215 DUES | 25,400 | 1,950 | 7.7% | 23,450 |
| 72216 SUBSCRIPTIONS | 12,600 | 910 | 7.2% | 11,690 |
| 72217 ADVERTISING | 300 | - | 0.0% | 300 |
| 72218 SERVICE CONTRACTS | 71,620 | 10,174 | 14.2% | 61,446 |
| 72241 INSURANCE EXPENSE | 150 | - | 0.0% | 150 |
| 72263 MICROCOMPUTER | 93,640 | 62,427 | 66.7% | 31,213 |
| 72267 RISK MANAGEMENT | 5,352 | 3,568 | 66.7% | 1,784 |
| 72271 RENTAL EQUIPMENT | 4,346 | 1,595 | 36.7% | 2,751 |
| 72272 RENTAL BUILDING | 159,180 | 106,120 | 66.7% | 53,060 |
| 72281 PROF FEE LEGAL | 241,000 | 3,292 | 1.4% | 237,708 |
| 72290 EDUCATION AND TRAINING | 10,000 | 75 | 0.8% | 9,925 |
| TOTAL CONTRACTUAL | 646,168 | 201,977 | 31.3% | 444,191 |
| 75509 BOOKS | 25,000 | 24,205 | 96.8% | 795 |
| 75520 SMALL EQUIPMENT AND TOOLS | 500 | - | 0.0% | 500 |
| 75525 FOOD | 500 | 372 | 74.4% | 128 |
| 75560 OFFICE GENERAL SUPPLIES | 10,000 | 3,631 | 36.3% | 6,369 |
| 75570 COMPUTER NONCAPITAL | 5,000 | 218 | 4.4% | 4,783 |
| TOTAL SUPPLIES | 41,000 | 28,426 | 69.3% | 12,574 |
| TOTAL LEGAL DEPARTMENT | 2,638,811 | 1,382,433 | 52.4% | 1,256,378 |

**YTD BUDGET REPORT
FINANCE DEPARTMENT**

| | | | 66.7% | |
|---------------------------------|------------------|---------------------------|---------------------|---------------------|
| ACCOUNT | 2025 BUDGET | 8/31/2025 EXPENDITURES | PERCENT EXPENDED | AVAILABLE BUDGET |
| 71112 SALARIES PERMANENT | 2,481,630 | 1,590,081 | 64.1% | 891,549 |
| 71113 SALARIES TEMPORARY | 12,500 | 4,352 | 34.8% | 8,148 |
| 71122 SALARIES OVERTIME PERM | 6,000 | 685 | 11.4% | 5,315 |
| 71181 AFSCME WELLNESS BONUS | 551 | 133 | 24.1% | 418 |
| 71251 IMRF | 338,349 | 264,815 | 78.3% | 73,534 |
| 71253 UNEMPLOYMENT | 1,761 | 1,058 | 60.1% | 703 |
| 71262 WORKMEN'S COMPENSATION | 6,913 | 4,752 | 68.7% | 2,161 |
| 71263 HEALTH INSURANCE | 570,529 | 362,502 | 63.5% | 208,027 |
| 71264 LIFE INSURANCE | 3,581 | 1,079 | 30.1% | 2,502 |
| 71271 PARKING BENEFITS | 21,865 | 14,577 | 66.7% | 7,288 |
| 71292 CELL PHONE ALLOWANCE | 2,210 | 629 | 28.5% | 1,581 |
| TOTAL PERSONNEL | 3,445,889 | 2,244,662 | 65.1% | 1,201,227 |
| 72203 WIRELESS | 3,710 | 1,522 | 41.0% | 2,188 |
| 72204 TELEPHONE VOIP | 13,700 | 9,133 | 66.7% | 4,567 |
| 72211 PRINTING & PUBLICATION | 4,350 | 1,286 | 29.6% | 3,064 |
| 72212 POSTAGE | 227,625 | 161,392 | 70.9% | 66,233 |
| 72214 TRAVEL | 2,450 | 1,070 | 43.7% | 1,380 |
| 72215 DUES | 4,160 | 1,970 | 47.4% | 2,190 |
| 72216 SUBSCRIPTIONS | 170 | 249 | 146.7% | (79) |
| 72217 ADVERTISING | 10,000 | 6,641 | 66.4% | 3,359 |
| 72218 SERVICE CONTRACTS | 369,100 | 174,029 | 47.1% | 195,071 |
| 72229 UNEMPLOYMENT TAX BENEFIT | - | 23,964 | 100.0% | (23,964) |
| 72231 UTILITIES-BLDG & OFF | 100 | - | 0.0% | 100 |
| 72263 MICROCOMPUTER | 300,480 | 200,320 | 66.7% | 100,160 |
| 72264 VEHICLE REPAIRS | 500 | - | 0.0% | 500 |
| 72267 RISK MANAGEMENT | 316,730 | 211,153 | 66.7% | 105,577 |
| 72270 CREDIT CARD SERVICE FEE | 500,000 | 283,170 | 56.6% | 216,830 |
| 72271 RENTAL EQUIPMENT | 11,400 | 3,501 | 30.7% | 7,899 |
| 72272 RENTAL BUILDING | 287,510 | 191,673 | 66.7% | 95,837 |
| 72282 PROF FEE AUDITING | 9,240 | 6,160 | 66.7% | 3,080 |
| 72288 PROF FEE MISC | 145,000 | 25,000.00 | 17.2% | 120,000 |
| 72290 EDUCATION AND TRAINING | 12,350 | 8,951 | 72.5% | 3,399 |
| 72292 CONSULTING FEE | 12,600 | - | 0.0% | 12,600 |
| 72299 MISCELLANEOUS CONTRACTUAL | 43,450 | 32,391 | 74.5% | 11,059 |
| TOTAL CONTRACTUAL | 2,274,625 | 1,343,576 | 59.1% | 931,049 |
| 75509 BOOKS | - | 18 | 100.0% | (18) |
| 75520 SMALL EQUIPMENT AND TOOLS | 150 | 359 | 239.3% | (209) |
| 75524 CLOTHING | 500 | 3,012 | 602.3% | (2,512) |
| 75525 FOOD | 6,200 | 1,958 | 31.6% | 4,242 |
| 75560 OFFICE GENERAL SUPPLIES | 26,250 | 13,615 | 51.9% | 12,635 |
| TOTAL SUPPLIES | 33,100 | 18,962 | 57.3% | 14,138 |

**YTD BUDGET REPORT
FINANCE DEPARTMENT**

| ACCOUNT | 2025 BUDGET | 8/31/2025 EXPENDITURES | 66.7% | AVAILABLE BUDGET |
|--------------------------------|----------------|---------------------------|---------------------|---------------------|
| | | | PERCENT EXPENDED | |
| 72302 TRANF TO TRANSIT SUBSIDY | 1,869,000 | 1,090,250 | 58.3% | 778,750 |
| 76754 COMM DEVELOP PROJECT | - | 104,178 | 100.0% | (104,178) |
| 76760 PROPERTY TAXES | - | 243 | 100.0% | (243) |
| 76794 SALES TAX REBATE | 355,000 | - | 0.0% | 355,000 |
| 77729 TRANF TO CPTL IMPROVE FD | 1,500,000 | 1,320,548 | 88.0% | 179,452 |
| 77733 TRANF TO BLDG MAINT | 124,500 | 83,000 | 66.7% | 41,500 |
| TOTAL OTHER | 4,450,300 | 2,720,808 | 61.1% | 1,729,492 |
| TOTAL FINANCE DEPARTMENT | 10,203,914 | 6,328,008 | 62.0% | 3,875,906 |

YTD BUDGET REPORT
HUMAN RESOURCES DEPARTMENT

| | | | 66.7% | |
|---|------------------|---------------------------|---------------------|---------------------|
| ACCOUNT | 2025 BUDGET | 8/31/2025 EXPENDITURES | PERCENT EXPENDED | AVAILABLE BUDGET |
| 71112 SALARIES PERMANENT | 604,351 | 396,330 | 65.6% | 208,021 |
| 71113 SALARIES TEMPORARY | - | 2,952 | 100.0% | (2,952) |
| 71180 EMPLOYMENT AGENCY WAGES | 2,800 | - | 0.0% | 2,800 |
| 71251 IMRF/FICA | 82,376 | 55,604 | 67.5% | 26,772 |
| 71253 UNEMPLOYMENT | 319 | 220 | 69.0% | 99 |
| 71262 WORKMEN'S COMPENSATION | 1,696 | 1,728 | 101.9% | (32) |
| 71263 HEALTH INSURANCE | 121,057 | 77,401 | 63.9% | 43,656 |
| 71264 LIFE INSURANCE | 661 | 181 | 27.4% | 480 |
| 71271 PARKING BENEFITS | 4,297 | 2,865 | 66.7% | 1,433 |
| TOTAL PERSONNEL | 817,557 | 537,281 | 65.7% | 280,276 |
| 72203 WIRELESS | 5,300 | 2,718 | 51.3% | 2,582 |
| 72204 TELEPHONE VOIP | 3,320 | 2,213 | 66.7% | 1,107 |
| 72211 PRINTING & PUBLICATION | 4,300 | - | 0.0% | 4,300 |
| 72212 POSTAGE | 110 | 21 | 19.4% | 89 |
| 72214 TRAVEL | 34,400 | 1,017 | 3.0% | 33,383 |
| 72215 DUES | 1,700 | 125 | 7.4% | 1,575 |
| 72216 SUBSCRIPTIONS | 8,275 | 355 | 4.3% | 7,920 |
| 72217 ADVERTISING | 40,000 | 14,942 | 37.4% | 25,058 |
| 72218 SERVICE CONTRACTS | 125,000 | 26,763 | 21.4% | 98,237 |
| 72255 MAINT-OFFICE & FURNITURE | 500 | - | 0.0% | 500 |
| 72263 MICROCOMPUTER | 86,180 | 57,453 | 66.7% | 28,727 |
| 72267 RISK MANAGEMENT | 2,164 | 1,443 | 66.7% | 722 |
| 72271 RENTAL EQUIPMENT | 4,000 | 1,060 | 26.5% | 2,940 |
| 72272 RENTAL BUILDING | 72,680 | 48,453 | 66.7% | 24,227 |
| 72281 PROF FEE LEGAL | 1,500 | - | 0.0% | 1,500 |
| 72284 PROF FEE MEDICAL | 85,000 | 5,309 | 6.2% | 79,691 |
| 72285 NEGOTIATIONS | 500 | - | 0.0% | 500 |
| 72288 MISC PROF FEES | 22,500 | 9,244 | 41.1% | 13,256 |
| 72290 EDUCATION AND TRAINING | 165,000 | 76,756 | 46.5% | 88,244 |
| 72299 MISCELLANEOUS CONTRACTUAL | 27,500 | 3,017 | 11.0% | 24,483 |
| TOTAL CONTRACTUAL | 689,929 | 250,890 | 36.4% | 439,039 |
| 75509 BOOKS | 500 | - | 0.0% | 500 |
| 75524 CLOTHING | 900 | - | 0.0% | 900 |
| 75525 FOOD | 4,000 | 100 | 2.5% | 3,900 |
| 75560 OFFICE GENERAL SUPPLIES | 10,500 | 3,607 | 34.3% | 6,893 |
| 75561 PHOTOGRAPHY & REPRODUCTN | 1,500 | - | 0.0% | 1,500 |
| TOTAL SUPPLIES | 17,400 | 3,707 | 21.3% | 13,693 |
| TOTAL HUMAN RESOURCES DEPARTMENT | 1,524,886 | 791,877 | 51.9% | 733,009 |

**YTD BUDGET REPORT
BOARD OF ELECTIONS**

| ACCOUNT | 2025 BUDGET | 8/31/2025 EXPENDITURES | 66.7% | AVAILABLE BUDGET |
|---------------------------------|------------------|---------------------------|-----------------|---------------------|
| | | | PERCENT USED | |
| 71111 SALARIES ADMINISTRATION | 11,218 | - | 0.0% | 11,218 |
| 71112 SALARIES PERMANENT | 183,227 | 92,286 | 50.4% | 90,941 |
| 71113 SALARIES TEMPORARY | 325,336 | - | 0.0% | 325,336 |
| 71122 SALARIES OVERTIME PERM | 23,800 | 3,160 | 13.3% | 20,640 |
| 71123 SALARIES OVERTIME TEMP | 9,000 | - | 0.0% | 9,000 |
| 71180 EMPLOYEE AGENCY WAGES | 15,000 | - | 0.0% | 15,000 |
| 71251 IMRF | 34,725 | 13,609 | 39.2% | 21,116 |
| 71253 UNEMPLOYMENT | 900 | 311 | 34.6% | 589 |
| 71263 HEALTH INSURANCE | 66,650 | 114,835 | 172.3% | (48,185) |
| TOTAL PERSONNEL | 669,856 | 224,201 | 33.5% | 445,655 |
| 72211 PRINTING & PUBLICATION | 130,050 | - | 0.0% | 130,050 |
| 72212 POSTAGE | 47,000 | - | 0.0% | 47,000 |
| 72213 TELEPHONE | 1,000 | - | 0.0% | 1,000 |
| 72214 TRAVEL | 3,000 | - | 0.0% | 3,000 |
| 72215 DUES | 2,000 | - | 0.0% | 2,000 |
| 72216 SUBSCRIPTIONS | 1,000 | - | 0.0% | 1,000 |
| 72217 ADVERTISING | 45,900 | - | 0.0% | 45,900 |
| 72231 UTILITIES-BLDG & OFF | 21,130 | 410 | 1.9% | 20,720 |
| 72241 INSURANCE EXPENSE | 21,000 | - | 0.0% | 21,000 |
| 72251 MAINT-BUILDING | 6,500 | - | 0.0% | 6,500 |
| 72255 MAINT-OFFICE & FURNITURE | 5,000 | - | 0.0% | 5,000 |
| 72259 CONTRACTED JANITORIAL SER | 9,460 | - | 0.0% | 9,460 |
| 72271 RENTAL EQUIPMENT | 8,400 | - | 0.0% | 8,400 |
| 72272 RENTAL BUILDING | 4,500 | 3,000 | 66.7% | 1,500 |
| 72281 PROF FEE LEGAL | 35,500 | - | 0.0% | 35,500 |
| 72282 PROF FEE AUDITING | 10,000 | - | 0.0% | 10,000 |
| 72295 GARBAGE - COMPOSTING | 1,800 | - | 0.0% | 1,800 |
| 72297 GARBAGE COLLECTION | 1,800 | - | 0.0% | 1,800 |
| 72299 MISCELLANEOUS CONTRACTUAL | 434,510 | 600,000 | 138.1% | (165,490) |
| TOTAL CONTRACTUAL | 789,550 | 603,410 | 76.4% | 186,140 |
| 75520 SMALL EQUIPMENT AND TOOLS | 5,500 | - | 0.0% | 5,500 |
| 75546 JANITORIAL SUPPLIES | 3,000 | - | 0.0% | 3,000 |
| 75560 OFFICE GENERAL SUPPLIES | 16,500 | - | 0.0% | 16,500 |
| 75570 COMPUTER NONCAPITAL | 16,600 | - | 0.0% | 16,600 |
| TOTAL SUPPLIES | 41,600 | - | 0.0% | 41,600 |
| 79920 OFFICE EQUIP & FURNT | 50,000 | - | 0.0% | 50,000 |
| TOTAL OTHER | 50,000 | - | 0.0% | 50,000 |
| TOTAL BOARD OF ELECTIONS | 1,551,006 | 827,611 | 53.4% | 723,395 |

**YTD BUDGET REPORT
POLICE DEPARTMENT**

| ACCOUNT | 2025 | 8/31/2025 | 66.7% | AVAILABLE |
|---------------------------------|-------------------|-------------------|---------------------|-------------------|
| | BUDGET | EXPENDITURES | PERCENT EXPENDED | |
| 71112 SALARIES PERMANENT | 33,218,871 | 20,804,292 | 62.6% | 12,414,579 |
| 71113 SALARIES TEMPORARY | 127,450 | - | 0.0% | 127,450 |
| 71118 SEVERANCE PAY | 265,000 | 465,934 | 175.8% | (200,934) |
| 71119 OUT OF CLASS PAY | 11,700 | 623 | 5.3% | 11,077 |
| 71122 SALARIES OVERTIME PERM | 3,138,884 | 3,350,227 | 106.7% | (211,343) |
| 71180 EMPLOYEE AGENCY WAGES | 35,000 | 38,320 | 109.5% | (3,320) |
| 71181 AFSCME WELLNESS BONUS | - | 264 | 100.0% | (264) |
| 71230 PENSION CONTRIBUTION | 15,721,965 | 10,252,846 | 65.2% | 5,469,119 |
| 71251 IMRF | 875,063 | 614,871 | 70.3% | 260,192 |
| 71253 UNEMPLOYMENT | 18,507 | 11,009 | 59.5% | 7,498 |
| 71262 WORKMEN'S COMPENSATION | 1,129,243 | 885,752 | 78.4% | 243,491 |
| 71263 HEALTH INSURANCE | 6,896,884 | 3,969,226 | 57.6% | 2,927,658 |
| 71264 LIFE INSURANCE | 62,975 | 11,019 | 17.5% | 51,956 |
| 71265 RETIREE HEALTH INSURANCE | 182,000 | - | 0.0% | 182,000 |
| 71272 CLOTHING ALLOWANCE | 82,400 | 85,018 | 103.2% | (2,618) |
| 71274 POWER TEST AWARD | 93,000 | - | 0.0% | 93,000 |
| 71290 PAGER ALLOWANCE | 34,062 | 31,530 | 92.6% | 2,532 |
| TOTAL PERSONNEL | 61,954,454 | 40,575,031 | 65.5% | 21,379,423 |
| 72203 WIRELESS SERVICE | 275,000 | 142,514 | 51.8% | 132,486 |
| 72204 VOIP | 77,640 | 51,760 | 66.7% | 25,880 |
| 72211 PRINTING & PUBLICATION | 37,850 | 3,734 | 9.9% | 34,116 |
| 72212 POSTAGE | 13,450 | 3,367 | 25.0% | 10,083 |
| 72213 TELEPHONE | - | 1,999 | 100.0% | (1,999) |
| 72214 TRAVEL | 91,250 | 46,238 | 50.7% | 45,012 |
| 72215 DUES | 28,610 | 5,874 | 20.5% | 22,736 |
| 72216 SUBSCRIPTIONS | 4,145 | 624 | 15.1% | 3,521 |
| 72217 ADVERTISING | 23,000 | 31,279 | 136.0% | (8,279) |
| 72218 SERVICE CONTRACTS | 3,122,980 | 2,301,624 | 73.7% | 821,356 |
| 72219 OTHER CONTRACTUAL SERVICE | 53,900 | 3,590 | 6.7% | 50,310 |
| 72231 UTILITIES-BLDG & OFF | 57,300 | 54,337 | 94.8% | 2,963 |
| 72251 MAINT-BUILDING | 580,978 | - | 0.0% | 580,978 |
| 72252 MAINT-EQUIPMENT | 40,600 | - | 0.0% | 40,600 |
| 72254 MAINT-VEHICLES | 166,250 | 329 | 0.2% | 165,921 |
| 72255 MAINT-OFFICE & FURNITURE | - | - | 100.0% | - |
| 72257 MAINT-COMMUNICATION EQUIP | 1,061,410 | 862,984 | 81.3% | 198,426 |
| 72263 MICROCOMPUTER | 2,626,810 | 1,751,207 | 66.7% | 875,603 |
| 72264 VEHICLE REPAIRS | 1,065,621 | 546,672 | 51.3% | 518,949 |
| 72265 FUEL | 798,360 | 412,117 | 51.6% | 386,243 |
| 72266 VEHICLE VENDOR SERVICE | 25,400 | 9,918 | 39.0% | 15,482 |
| 72267 RISK MANAGEMENT | 660,809 | 440,539 | 66.7% | 220,270 |

**YTD BUDGET REPORT
POLICE DEPARTMENT**

| | 2025 | 8/31/2025 | 66.7% | |
|--------------------------------------|------------|--------------|---------------------|---------------------|
| ACCOUNT | BUDGET | EXPENDITURES | PERCENT EXPENDED | AVAILABLE BUDGET |
| 72269 SERV CHARGE COMMUNICATION | 4,279,429 | 2,852,953 | 66.7% | 1,426,476 |
| 72270 CREDIT CARD SERVICE FEE | 15,000 | 975 | 6.5% | 14,025 |
| 72271 RENTAL EQUIPMENT | 161,340 | 28,273 | 17.5% | 133,067 |
| 72272 RENTAL BUILDING | 638,920 | 425,947 | 66.7% | 212,973 |
| 72284 PROF FEE MEDICAL | 17,700 | 7,461 | 42.2% | 10,239 |
| 72290 EDUCATION AND TRAINING | 770,405 | 118,150 | 15.3% | 652,255 |
| 72292 CONSULTING FEE | 10,000 | - | 0.0% | 10,000 |
| 72299 MISCELLANEOUS CONTRACTUAL | 67,900 | 6,566 | 9.7% | 61,334 |
| TOTAL CONTRACTUAL | 16,772,057 | 10,111,029 | 60.3% | 6,661,028 |
| 75509 BOOKS | 1,850 | - | 0.0% | 1,850 |
| 75520 SMALL EQUIPMENT AND TOOLS | 905,654 | 144,268 | 15.9% | 761,386 |
| 75521 MEDICINE AND DRUGS | 22,100 | 6,574 | 29.7% | 15,526 |
| 75524 CLOTHING | 325,840 | 126,117 | 38.7% | 199,723 |
| 75525 FOOD | 52,400 | 6,618 | 12.6% | 45,782 |
| 75527 LINENS AND LAUNDRY | 4,000 | 2,945 | 73.6% | 1,055 |
| 75545 MAINT-COMMUNICATIONS | 12,400 | - | 0.0% | 12,400 |
| 75546 MAINT-JANITORIAL & CLNG | 1,100 | - | 0.0% | 1,100 |
| 75560 OFFICE GENERAL SUPPLIES | 34,650 | 11,302 | 32.6% | 23,348 |
| 75561 PHOTOGRAPHY & REPRODUCTN | 15,100 | - | 0.0% | 15,100 |
| 75569 MISCELLANEOUS SUPPLIES | - | 4,162 | 100.0% | (4,162) |
| 75570 COMPUTER NONCAPITAL | 163,306 | 83,702 | 51.3% | 79,604 |
| 75590 BUILDING NONCAPITAL | 10,000 | - | 0.0% | 10,000 |
| 75591 OTHER BUILDING IMPR NONCAPITAL | 27,175 | - | 0.0% | 27,175 |
| 75592 EQUIP & FURNITURE NONCAPITAL | 968,100 | 216,313 | 22.3% | 751,787 |
| TOTAL SUPPLIES | 2,543,675 | 602,002 | 23.7% | 1,941,673 |
| 76760 PROPERTY TAXES | 40,000 | - | 0.0% | 40,000 |
| 76790 MISCELLANEOUS | - | 9,300 | 100.0% | (9,300) |
| 77721 TRANSFER TO DEBT SERVICE | 2,777,392 | 1,564,768 | 56.3% | 1,212,624 |
| 77762 TRANSFER TO CAPITAL FUND | 1,231,459 | 820,973 | 66.7% | 410,487 |
| 77768 TRANSFER TO SPEC REV FD | 387,266 | 208,845 | 53.9% | 178,421 |
| 78758 NOTE/BOND ISSUE COST | - | 650 | 100.0% | (650) |
| TOTAL OTHER | 4,436,117 | 2,604,536 | 58.7% | 1,831,581 |
| 79922 VEHICLE & OPERATING EQUIP | 3,471,667 | 762,757 | 22.0% | 2,708,910 |
| TOTAL CAPITAL | 3,471,667 | 762,757 | 22.0% | 2,708,910 |
| TOTAL POLICE DEPARTMENT | 89,177,970 | 54,655,355 | 61.3% | 34,522,615 |

**YTD BUDGET REPORT
FIRE DEPARTMENT**

| | 2025 | 8/31/2025 | 66.7% PERCENT USED | AVAILABLE BUDGET |
|-------------------------------------|-------------------|-------------------|--------------------------|---------------------|
| | BUDGET | EXPENDED | | |
| 71112 SALARIES PERMANENT | 29,743,412 | 19,562,593 | 65.8% | 10,180,819 |
| 71113 SALARIES TEMPORARY | 25,000 | 18,957 | 75.8% | 6,043 |
| 71118 SEVERANCE PAY | 350,000 | 403,620 | 115.3% | (53,620) |
| 71119 OUT OF CLASS PAY | 168,000 | 146,041 | 86.9% | 21,959 |
| 71122 SALARIES OVERTIME PERM | 1,881,575 | 1,961,623 | 104.3% | (80,048) |
| 71181 AFSCME WELLNESS BONUS | 200 | - | 0.0% | 200 |
| 71230 PENSION CONTRIBUTION | 18,890,901 | 12,437,798 | 65.8% | 6,453,103 |
| 71251 IMRF/FICA | 495,500 | 362,574 | 73.2% | 132,926 |
| 71253 UNEMPLOYMENT | 15,484 | 10,207 | 65.9% | 5,277 |
| 71262 WORKMEN'S COMPENSATION | 1,559,955 | 1,275,287 | 81.8% | 284,668 |
| 71263 HEALTH INSURANCE | 6,245,313 | 4,142,066 | 66.3% | 2,103,247 |
| 71264 LIFE INSURANCE | 31,751 | 10,186 | 32.1% | 21,565 |
| 71265 RETIREE HEALTH INSURANCE | 200,200 | - | 0.0% | 200,200 |
| 71271 PARKING | 47,058 | 31,372 | 66.7% | 15,686 |
| 71272 CLOTHING ALLOWANCE | 92,305 | 36,990 | 40.1% | 55,315 |
| 71290 PAGER ALLOWANCE | 30,000 | 46,706 | 155.7% | (16,706) |
| 71292 CELL PHONE ALLOWANCE | - | 289 | 100.0% | (289) |
| TOTAL PERSONNEL | 59,776,654 | 40,446,309 | 67.7% | 19,330,345 |
| 72203 WIRELESS SERVICE | 60,000 | 39,406 | 65.7% | 20,594 |
| 72204 TELEPHONE-VOIP | 63,110 | 42,073 | 66.7% | 21,037 |
| 72211 PRINTING & PUBLICATION | 6,950 | 2,392 | 34.4% | 4,558 |
| 72212 POSTAGE | 5,500 | 2,147 | 39.0% | 3,353 |
| 72213 TELEPHONE | 3,200 | 2,831 | 88.5% | 369 |
| 72214 TRAVEL | 30,350 | 18,256 | 60.2% | 12,094 |
| 72215 DUES | 17,600 | 15,731 | 89.4% | 1,869 |
| 72216 SUBSCRIPTIONS | 13,900 | 5,027 | 36.2% | 8,873 |
| 72217 ADVERTISING | 20,000 | 217 | 1.1% | 19,783 |
| 72218 SERVICE CONTRACTS | 1,157,400 | 311,062 | 26.9% | 846,338 |
| 72231 UTILITIES-BLDG & OFF | 98,100 | 89,418 | 91.1% | 8,682 |
| 72251 MAINT-BUILDING | 1,200 | 5,544 | 462.0% | (4,344) |
| 72257 MAINT-COMMUNICATION EQUIPMENT | 35,150 | 2,668 | 7.6% | 32,482 |
| 72259 CONTRACTED JANITORIAL SERVICE | 18,000 | 10,164 | 56.5% | 7,836 |
| 72263 MICROCOMPUTER | 979,582 | 653,055 | 66.7% | 326,527 |
| 72264 VEHICLE REPAIRS | 18,190 | 59,585 | 327.6% | (41,395) |
| 72265 FUEL | 413,220 | 188,048 | 45.5% | 225,172 |
| 72266 VEHICLE VENDOR SERVICE | 137,000 | 130,620 | 95.3% | 6,380 |
| 72267 RISK MANAGEMENT | 255,142 | 170,095 | 66.7% | 85,047 |
| 72269 SERV CHARGE COMMUNICATION | 1,743,717 | 1,162,478 | 66.7% | 581,239 |
| 72271 RENTAL EQUIPMENT | 12,000 | 9,062 | 75.5% | 2,938 |
| 72272 RENTAL BUILDING | 372,410 | 248,273 | 66.7% | 124,137 |
| 72274 RENTAL CAR CENTRAL GARAGE | - | 2,939 | 100.0% | (2,939) |

**YTD BUDGET REPORT
FIRE DEPARTMENT**

| | 2025 | 8/31/2025 | 66.7% PERCENT USED | AVAILABLE BUDGET |
|-------------------------------------|-------------------|-------------------|--------------------------|---------------------|
| | BUDGET | EXPENDED | | |
| 72283 ENGINEERING-DESIGN | - | 11,662 | 100.0% | (11,662) |
| 72284 PROF FEE MEDICAL | 31,100 | 3,068 | 9.9% | 28,032 |
| 72288 PROF FEES - MISCELLANEOUS | 35,000 | 51,233 | 146.4% | (16,233) |
| 72290 EDUCATION AND TRAINING | 68,200 | 54,276 | 79.6% | 13,924 |
| 72297 GARBAGE COLLECTION | 6,500 | 10,293 | 158.4% | (3,793) |
| 72299 MISCELLANEOUS CONTRACTUAL | 26,750 | 59,920 | 224.0% | (33,170) |
| 73100 PASS THROUGH GRANT | - | 179,406 | 100.0% | (179,406) |
| TOTAL CONTRACTUAL | 5,629,271 | 3,540,948 | 62.9% | 2,088,323 |
| 75509 BOOKS | 6,000 | 5,062 | 84.4% | 938 |
| 75520 SMALL EQUIPMENT AND TOOLS | 381,130 | 219,764 | 57.7% | 161,366 |
| 75521 MEDICINE AND DRUGS | 120,020 | 67,455 | 56.2% | 52,565 |
| 75524 CLOTHING | 716,850 | 347,080 | 48.4% | 369,770 |
| 75525 FOOD | 10,500 | 2,881 | 27.4% | 7,619 |
| 75526 FUEL AND LUBRICANTS | 30,000 | 10,218 | 34.1% | 19,782 |
| 75527 LINENS AND LAUNDRY | 37,125 | 22,139 | 59.6% | 14,986 |
| 75529 OTHER SUPPLIES | 20,000 | 704 | 3.5% | 19,296 |
| 75540 MAINT-BUILDING | 10,000 | 10,565 | 105.6% | (565) |
| 75541 MAINT- GROUNDS | 23,000 | 3,329 | 14.5% | 19,671 |
| 75543 MAINT-EQUIPMENT | 207,850 | 86,291 | 41.5% | 121,559 |
| 75544 MAINT-VEHICLES | 500,500 | 216,410 | 43.2% | 284,090 |
| 75545 MAINT-COMMUNICATIONS | 5,000 | 13,002 | 260.0% | (8,002) |
| 75546 MAINT-JANITORIAL & CLNG | 60,000 | 36,177 | 60.3% | 23,823 |
| 75560 OFFICE GENERAL SUPPLIES | 39,200 | 36,485 | 93.1% | 2,715 |
| 75561 PHOTOGRAPHY & REPRODUCTN | 41,000 | 15,875 | 38.7% | 25,125 |
| 75570 COMPUTER NONCAPITAL | 635,378 | 187,707 | 29.5% | 447,671 |
| 75590 BUILDINGS & IMPROV NONCAPITAL | - | 15,675 | 100.0% | (15,675) |
| 75592 EQUIP & FURNITURE NONCAPITAL | 275,000 | 110,777 | 40.3% | 164,223 |
| TOTAL SUPPLIES | 3,118,553 | 1,407,596 | 45.1% | 1,710,957 |
| 76790 MISCELLANEOUS | - | 634 | 100.0% | (634) |
| 77721 TRANS TO DEBT SERVICE | 382,994 | 254,729 | 66.5% | 128,265 |
| 77762 TRANS TO CAPITAL LEASE | 1,107,175 | 738,116 | 66.7% | 369,059 |
| TOTAL OTHER | 1,490,169 | 993,479 | 66.7% | 496,690 |
| 79911 BUILDING-IMPROVEMENTS | - | 731,052 | 100% | (731,052) |
| 79922 VEHICLE & OPERATING EQUIP | 8,710,100 | 879,871 | 10.1% | 7,830,229 |
| 79938 CONSTRUCTION PROJECT | - | 72,864 | 100% | (72,864) |
| TOTAL CAPITAL | 8,710,100 | 1,683,787 | 19.3% | 7,026,313 |
| TOTAL FIRE DEPARTMENT | 78,724,747 | 48,072,119 | 61.1% | 30,652,628 |

YTD BUDGET REPORT
911 DIVISION

| | 2025 | 8/31/2025 | 66.7% | |
|---------------------------------|------------------|------------------|--------------|------------------|
| | BUDGET | EXPENDED | PERCENT USED | AVAILABLE BUDGET |
| 71112 SALARIES PERMANENT | 4,192,962 | 2,650,857 | 63.2% | 1,542,105 |
| 71113 SALARIES TEMPORARY | - | 977 | 100.0% | (977) |
| 71122 SALARIES OVERTIME PERM | 572,000 | 658,500 | 115.1% | (86,500) |
| 71181 AFSCME WELLNESS BONUS | 500 | 268 | 53.6% | 232 |
| 71251 IMRF/FICA | 571,522 | 463,458 | 81.1% | 108,064 |
| 71253 UNEMPLOYMENT | 2,970 | 1,713 | 57.7% | 1,257 |
| 71262 WORKMEN'S COMPENSATION | 11,586 | 9,336 | 80.6% | 2,250 |
| 71263 HEALTH INSURANCE | 1,100,138 | 624,389 | 56.8% | 475,749 |
| 71264 LIFE INSURANCE | 5,830 | 1,757 | 30.1% | 4,073 |
| 71272 CLOTHING ALLOWANCE | 8,500 | 6,445 | 75.8% | 2,055 |
| 71292 CELL PHONE ALLOWANCE | 1,000 | 578 | 57.8% | 422 |
| TOTAL PERSONNEL | 6,467,008 | 4,418,277 | 68.3% | 2,048,731 |
| 72203 WIRELESS SERVICE | 2,900 | 1,854 | 63.9% | 1,046 |
| 72211 PRINTING & PUBLICATION | 1,000 | - | 0.0% | 1,000 |
| 72212 POSTAGE | 100 | - | 0.0% | 100 |
| 72213 TELEPHONE | 190,000 | - | 0.0% | 190,000 |
| 72214 TRAVEL | 500 | - | 0.0% | 500 |
| 72215 DUES | 500 | - | 0.0% | 500 |
| 72216 SUBSCRIPTIONS | 300 | - | 0.0% | 300 |
| 72218 SERVICE CONTRACTS | 404,000 | 211 | 0.1% | 403,789 |
| 72251 MAINT-BUILDING | 2,500 | 1,266 | 50.7% | 1,234 |
| 72263 MICROCOMPUTER | 153,110 | 102,073 | 66.7% | 51,037 |
| 72267 RISK MANAGEMENT | 29,550 | 19,700 | 66.7% | 9,850 |
| 72271 RENTAL EQUIPMENT | 5,000 | 1,584 | 31.7% | 3,416 |
| 72282 PROF FEE AUDITING | 5,930 | - | 0.0% | 5,930 |
| 72290 EDUCATION AND TRAINING | 5,200 | - | 0.0% | 5,200 |
| 72292 CONSULTING FEE | 200 | - | 0.0% | 200 |
| 72299 MISCELLANEOUS CONTRACTUAL | 50,000 | - | 0.0% | 50,000 |
| TOTAL CONTRACTUAL | 850,790 | 126,689 | 14.9% | 724,101 |
| 75520 SMALL EQUIPMENT AND TOOLS | 4,000 | - | 0.0% | 4,000 |
| 75524 CLOTHING | 23,000 | 11,921 | 51.8% | 11,079 |
| 75525 FOOD | 200 | - | 0.0% | 200 |
| 75527 LINENS AND LAUNDRY | 100 | - | 0.0% | 100 |
| 75546 MAINT-JANITORIAL & CLNG | 200 | - | 0.0% | 200 |
| 75560 OFFICE GENERAL SUPPLIES | 2,000 | 510 | 25.5% | 1,490 |
| 75570 COMPUTER NON-CAPITAL | 12,500 | 2,443 | 19.5% | 10,057 |
| TOTAL SUPPLIES | 42,000 | 14,875 | 35.4% | 27,125 |
| 76780 DEPRECIATION | 9,837 | - | 0.0% | 9,837 |
| TOTAL OTHER | 9,837 | - | 0.0% | 9,837 |
| TOTAL 911 DIVISION | 7,369,635 | 4,559,841 | 61.9% | 2,809,794 |

YTD BUDGET REPORT
BOARD OF FIRE & POLICE COMMISSIONERS

| | | | 66.7% | |
|---------------------------------|----------------|---------------------------|---------------------|---------------------|
| ACCOUNT | 2025 BUDGET | 8/31/2025 EXPENDITURES | PERCENT EXPENDED | AVAILABLE BUDGET |
| 71113 SALARIES TEMPORARY | 40,000 | 50,964 | 127.4% | (10,964) |
| 71251 IMRF | 6,581 | 3,899 | 59.2% | 2,682 |
| 71253 UNEMPLOYMENT | 106 | 61 | 58.0% | 45 |
| 71262 WORKMEN'S COMPENSATION | 112 | 3,460 | 3089.7% | (3,348) |
| TOTAL PERSONNEL | 46,799 | 58,385 | 124.8% | (11,586) |
| 72211 PRINTING & PUBLICATION | 1,000 | - | 0.0% | 1,000 |
| 72215 DUES | 375 | - | 0.0% | 375 |
| 72217 ADVERTISING | 20,000 | 230 | 1.2% | 19,770 |
| 72218 SERVICE CONTRACTS | 5,200 | 51,053 | 981.8% | (45,853) |
| 72219 OTHER CONTRACTUAL | 10,500 | 5,250 | 50.0% | 5,250 |
| 72272 RENTAL BUILDING | 100 | 67 | 66.5% | 34 |
| 72281 PROF FEE LEGAL | 1,000 | - | 0.0% | 1,000 |
| 72284 PROF FEE MEDICAL | 14,900 | - | 0.0% | 14,900 |
| 72290 EDUCATION AND TRAINING | 2,500 | - | 0.0% | 2,500 |
| 72292 CONSULTING FEE | 208,839 | 23,181 | 11.1% | 185,658 |
| 72299 MISCELLANEOUS CONTRACTUAL | 2,500 | - | 0.0% | 2,500 |
| TOTAL CONTRACTUAL | 266,914 | 79,781 | 29.9% | 187,133 |
| 75520 SMALL EQUIPMENT AND TOOLS | 300 | - | 0.0% | 300 |
| 75525 FOOD | - | 307 | 100.0% | (307) |
| 75560 OFFICE GENERAL SUPPLIES | 200 | - | 0.0% | 200 |
| TOTAL SUPPLIES | 500 | 307 | 61.4% | (107) |
| TOTAL BFPC | 314,213 | 138,472 | 44.1% | 175,441 |

YTD BUDGET REPORT
COMMUNITY DEVELOPMENT ADMINISTRATION

| | | | 66.7% | |
|------------------------------------|----------------|-----------------------|-----------------|---------------------|
| ACCOUNT | 2025 BUDGET | 8/31/2025 EXPENSES | PERCENT USED | AVAILABLE BUDGET |
| 71112 SALARIES PERMANENT | 207,362 | 141,183 | 68.1% | 66,179 |
| 71251 IMRF | 28,264 | 19,740 | 69.8% | 8,524 |
| 71253 UNEMPLOYMENT | 91 | 79 | 86.5% | 12 |
| 71262 WORKMEN'S COMPENSATION | 1,530 | 1,957 | 127.9% | (427) |
| 71263 HEALTH INSURANCE | 38,610 | 27,879 | 72.2% | 10,731 |
| 71264 LIFE INSURANCE | 187 | 78 | 41.6% | 109 |
| 71271 PARKING BENEFITS | 1,218 | 812 | 66.7% | 406 |
| TOTAL PERSONNEL | 277,262 | 191,727 | 69.2% | 85,535 |
| 72203 WIRELESS | 1,428 | 540 | 37.8% | 888 |
| 72204 TELEPHONE-VOIP | 830 | 553 | 66.7% | 277 |
| 72211 PRINTING & PUBLICATION | 2,057 | 196 | 9.5% | 1,861 |
| 72212 POSTAGE | 30 | 4 | 14.2% | 26 |
| 72214 TRAVEL | 2,550 | 664 | 26.0% | 1,886 |
| 72215 DUES | 2,500 | 165 | 6.6% | 2,335 |
| 72216 SUBSCRIPTIONS | 8,600 | 2,279 | 26.5% | 6,321 |
| 72218 SERVICE CONTRACTS | 4,660 | 4,008 | 86.0% | 652 |
| 72263 MICROCOMPUTER | 32,110 | 21,407 | 66.7% | 10,703 |
| 72264 VEHICLE REPAIRS | 3,030 | 4,706 | 155.3% | (1,676) |
| 72265 FUEL | 1,650 | 2,112 | 128.0% | (462) |
| 72266 VEHICLE VENDOR SERVICE | 8,000 | - | 0.0% | 8,000 |
| 72267 RISK MANAGEMENT | 1,137 | 758 | 66.7% | 379 |
| 72271 RENTAL EQUIPMENT | 306 | 71 | 23.3% | 235 |
| 72272 RENTAL BUILDING | 8,380 | 5,587 | 66.7% | 2,793 |
| 72290 EDUCATION AND TRAINING | 5,100 | 536 | 10.5% | 4,564 |
| 72299 MISCELLANEOUS CONTRACTUAL | 20,000 | - | 0.0% | 20,000 |
| TOTAL CONTRACTUAL | 102,368 | 43,587 | 42.6% | 58,781 |
| 75509 BOOKS | 50 | - | 0.0% | 50 |
| 75520 SMALL EQUIPMENT AND TOOLS | 612 | - | 0.0% | 612 |
| 75525 FOOD | 4,000 | 193 | 4.8% | 3,807 |
| 75560 OFFICE GENERAL SUPPLIES | 1,520 | 254 | 16.7% | 1,266 |
| 75565 PUBLIC RELATIONS | 5,000 | 425 | 8.5% | 4,575 |
| 75570 COMPUTER NONCAPITAL | 2,000 | - | 0.0% | 2,000 |
| 75592 EQUIP & FURNITURE NONCAPITAL | 820 | - | 0.0% | 820 |
| 75599 MISCELLANEOUS SUPPLIES | 4,000 | - | 0.0% | 4,000 |
| TOTAL SUPPLIES | 18,002 | 872 | 4.8% | 16,468 |
| 76709 LOANS AND GRANTS | - | 22,168 | 100.0% | (22,168) |
| TOTAL OTHER | - | 22,168 | 100.0% | (22,168) |
| 79901 LAND ACQUISITION | - | 1,000 | 100.0% | (1,000) |
| TOTAL CAPITAL | - | 1,000 | 100.0% | (1,000) |
| TOTAL CD ADMIN | 397,632 | 259,355 | 65.2% | 137,615 |

YTD BUDGET REPORT
CONSTRUCTION AND DEVELOPMENT SERVICES DIVISION

| ACCOUNT | 2025 BUDGET | 8/31/2025 EXPENDED | 66.7% PERCENT USED | AVAILABLE BUDGET |
|---------------------------------|-------------------|-----------------------|--------------------------|---------------------|
| 71112 SALARIES PERMANENT | 1,641,290 | 983,146 | 59.9% | 658,144 |
| 71113 SALARIES TEMPORARY | 30,000 | 44,128 | 147.1% | (14,128) |
| 71122 SALARIES OVERTIME PERM | 19,100 | 37,284 | 195.2% | (18,184) |
| 71180 EMPLOYEE AGENCY WAGES | - | 58,222 | 100.0% | (58,222) |
| 71251 IMRF | 224,081 | 146,933 | 65.6% | 77,148 |
| 71253 UNEMPLOYMENT | 1,980 | 777 | 39.3% | 1,203 |
| 71262 WORKMEN'S COMPENSATION | 42,418 | 30,808 | 72.6% | 11,610 |
| 71263 HEALTH INSURANCE | 392,509 | 213,064 | 54.3% | 179,445 |
| 71264 LIFE INSURANCE | 2,555 | 683 | 26.7% | 1,872 |
| 71271 PARKING BENEFITS | 14,790 | 9,860 | 66.7% | 4,930 |
| 71292 CELL PHONE ALLOWANCE | - | 272 | 100.0% | (272) |
| TOTAL PERSONNEL | 2,368,723 | 1,525,178 | 64.4% | 843,817 |
| 72203 WIRELESS | 18,258 | 12,022 | 65.8% | 6,236 |
| 72204 TELEPHONE-VOIP | 21,170 | 14,113 | 66.7% | 7,057 |
| 72211 PRINTING & PUBLICATION | 7,494 | 480 | 6.4% | 7,014 |
| 72212 POSTAGE | 6,120 | 2,551 | 41.7% | 3,569 |
| 72214 TRAVEL | 11,550 | 5,775 | 50.0% | 5,775 |
| 72215 DUES | 5,565 | 2,594 | 46.6% | 2,971 |
| 72216 SUBSCRIPTIONS | 4,320 | 2,317 | 53.6% | 2,003 |
| 72218 SERVICE CONTRACTS | 697,750 | 250,371 | 35.9% | 447,379 |
| 72260 CLEANUPS | 255,000 | 116,068 | 45.5% | 138,932 |
| 72261 DEMOLITION | 372,533 | 261,273 | 70.1% | 111,260 |
| 72263 MICROCOMPUTER | 338,710 | 225,807 | 66.7% | 112,903 |
| 72264 VEHICLE REPAIRS | 42,690 | 20,909 | 49.0% | 21,781 |
| 72265 FUEL | 20,420 | 9,942 | 48.7% | 10,478 |
| 72267 RISK MANAGEMENT | 38,583 | 25,722 | 66.7% | 12,861 |
| 72271 RENTAL EQUIPMENT | 4,794 | 1,583 | 33.0% | 3,211 |
| 72272 RENTAL BUILDING | 151,600 | 101,067 | 66.7% | 50,533 |
| 72274 RENTAL CAR CENTRAL GARAGE | 7,217 | 3,721 | 51.6% | 3,496 |
| 72281 PROF FEE LEGAL | 40,000 | 17,471 | 43.7% | 22,530 |
| 72282 PROF FEE AUDITING | - | - | 100.0% | - |
| 72290 EDUCATION AND TRAINING | 20,210 | 7,924 | 39.2% | 12,286 |
| 72292 CONSULTING FEE | 15,000 | 1,400 | 9.3% | 13,600 |
| 72297 COLLECTION | 11,270,800 | 7,582,382 | 67.3% | 3,688,418 |
| TOTAL CONTRACTUAL | 13,349,784 | 8,665,491 | 64.9% | 4,684,293 |
| 75509 BOOKS | 2,000 | - | 0.0% | 2,000 |
| 75520 SMALL EQUIPMENT AND TOOLS | 4,867 | 1,648 | 33.9% | 3,219 |
| 75524 CLOTHING | 6,000 | 2,183 | 36.4% | 3,817 |
| 75525 FOOD | 1,500 | 367 | 24.5% | 1,133 |

YTD BUDGET REPORT
CONSTRUCTION AND DEVELOPMENT SERVICES DIVISION

| ACCOUNT | 2025 BUDGET | 8/31/2025 EXPENDED | 66.7% | AVAILABLE BUDGET |
|---------------------------------------|-------------------|-----------------------|-----------------|---------------------|
| | | | PERCENT USED | |
| 75546 MAINT-JANITORIAL & CLNG | 350 | 146 | 41.7% | 204 |
| 75560 OFFICE GENERAL SUPPLIES | 7,140 | 4,066 | 57.0% | 3,074 |
| 75570 COMPUTER NONCAPITAL | 15,372 | 1,938 | 12.6% | 13,434 |
| 75592 EQUIP & FURNITURE NONCAPITAL | 4,050 | 1,951 | 48.2% | 2,099 |
| TOTAL SUPPLIES | 41,279 | 12,299 | 29.8% | 26,881 |
| 76602 COMMERCIAL ACQUISITION | - | 1,045 | 100.0% | (1,045) |
| 76709 LOANS AND GRANTS | - | 7,440 | 100.0% | (7,440) |
| 76730 BILL ASSISTANCE | 30,000 | 13,262 | 44.2% | 16,738 |
| 76760 PROPERTY TAXES | 6,300 | - | 0.0% | 6,300 |
| 77762 TRANF TO CAPITAL LEASE FUND | 33,929 | 22,619 | 66.7% | 11,310 |
| TOTAL OTHER | 70,229 | 44,367 | 63.2% | 25,862 |
| 79922 VEHICLE & OPERATING EQUIP | - | 91,695 | 100.0% | (91,695) |
| TOTAL CAPITAL | - | 91,695 | 100.0% | (91,695) |
| TOTAL CONST & DEV SERVICES | 15,830,015 | 10,339,030 | 65.3% | 5,489,158 |

**YTD BUDGET REPORT
PLANNING DIVISION**

| | 2025 | 8/31/2025 | 66.7% | |
|------------------------------------|------------------|------------------|---------------|------------------|
| ACCOUNT | BUDGET | EXPENSES | PERCENT USED | AVAILABLE BUDGET |
| 71112 SALARIES PERMANENT | 904,984 | 414,966 | 45.9% | 490,018 |
| 71122 SALARIES OVERTIME | - | 1,422 | 100.0% | (1,422) |
| 71251 IMRF | 123,357 | 58,162 | 47.1% | 65,195 |
| 71253 UNEMPLOYMENT | 565 | 246 | 43.5% | 319 |
| 71262 WORKMEN'S COMPENSATION | 9,701 | 4,950 | 51.0% | 4,751 |
| 71263 HEALTH INSURANCE | 215,242 | 94,478 | 43.9% | 120,764 |
| 71264 LIFE INSURANCE | 1,107 | 246 | 22.3% | 861 |
| 71271 PARKING BENEFITS | 7,523 | 5,015 | 66.7% | 2,508 |
| TOTAL PERSONNEL | 1,262,479 | 579,486 | 45.9% | 682,993 |
| 72203 WIRELESS | 2,632 | 1,736 | 66.0% | 896 |
| 72204 TELEPHONE-VOIP | 1,660 | 1,107 | 66.7% | 553 |
| 72211 PRINTING & PUBLICATION | 4,060 | 6,902 | 170.0% | (2,842) |
| 72212 POSTAGE | 608 | 355 | 58.4% | 253 |
| 72214 TRAVEL | 2,100 | 745 | 35.5% | 1,355 |
| 72215 DUES | 3,750 | 2,950 | 78.7% | 800 |
| 72216 SUBSCRIPTIONS | 50 | - | 0.0% | 50 |
| 72217 ADVERTISING | 3,500 | - | 0.0% | 3,500 |
| 72218 SERVICE CONTRACTS | 245,500 | 142,550 | 58.1% | 102,950 |
| 72219 OTHER SERVICE CONTRACTS | 2,100 | 675 | 32.1% | 1,425 |
| 72263 MICROCOMPUTER | 83,340 | 55,560 | 66.7% | 27,780 |
| 72264 VEHICLE REPAIRS | 1,980 | 1,453 | 73.4% | 527 |
| 72265 FUEL | 310 | - | 0.0% | 310 |
| 72267 RISK MANAGEMENT | 3,329 | 2,219 | 66.7% | 1,110 |
| 72271 RENTAL EQUIPMENT | 2,060 | 1,202 | 58.4% | 858 |
| 72272 RENTAL BUILDING | 8,380 | 5,587 | 66.7% | 2,793 |
| 72281 PROF FEE LEGAL | 500 | - | 0.0% | 500 |
| 72290 EDUCATION & TRAINING | 4,580 | 1,335 | 29.1% | 3,245 |
| TOTAL CONTRACTUAL | 370,439 | 224,375 | 60.6% | 146,064 |
| 75520 SMALL EQUIPMENT AND TOOLS | 200 | (2) | -1.2% | 202 |
| 75525 FOOD | 400 | 88 | 21.9% | 312 |
| 75546 MAINT-JANITORIAL & CLNG | 50 | - | 0.0% | 50 |
| 75560 OFFICE GENERAL SUPPLIES | 1,065 | 354 | 33.3% | 711 |
| 75570 COMPUTER NON-CAPITAL | 3,020 | - | 0.0% | 3,020 |
| 75592 EQUIP & FURNITURE NONCAPITAL | 250 | 132 | 52.7% | 118 |
| TOTAL SUPPLIES | 4,985 | 571 | 11.5% | 4,414 |
| 76709 LOANS AND GRANTS | - | 400,000 | 100.0% | (400,000) |
| TOTAL OTHER | - | 400,000 | 100.0% | (400,000) |
| TOTAL PLANNING | 1,637,903 | 1,204,433 | 73.5% | 433,470 |

**YTD BUDGET REPORT
PW ADMINISTRATION**

| | 2025 | 8/31/2025 | 66.7% PERCENT USED | AVAILABLE BUDGET |
|--|------------------|----------------|--------------------------|---------------------|
| ACCOUNTS | BUDGET | EXPENDED | | |
| 71112 SALARIES PERMANENT | 771,863 | 508,028 | 65.8% | 263,835 |
| 71122 SALARIES OVERTIME PERM | 5,000 | 2,742 | 54.8% | 2,258 |
| 71181 AFSCME WELLNESS BONUS | - | 153 | 100.0% | (153) |
| 71251 IMRF | 105,208 | 71,452 | 67.9% | 33,756 |
| 71253 UNEMPLOYMENT | 477 | 281 | 59.0% | 196 |
| 71262 WORKMEN'S COMPENSATION | 2,128 | 3,086 | 145.0% | (958) |
| 71263 HEALTH INSURANCE | 147,979 | 91,406 | 61.8% | 56,573 |
| 71264 LIFE INSURANCE | 990 | 244 | 24.7% | 746 |
| 71271 PARKING BENEFITS | 1,432 | 955 | 66.7% | 478 |
| TOTAL PERSONNEL | 1,035,077 | 678,346 | 65.5% | 356,731 |
| 72203 WIRELESS SERVICE | 4,000 | 1,812 | 45.3% | 2,188 |
| 72204 TELEPHONE-VOIP | 2,080 | 1,387 | 66.7% | 694 |
| 72211 PRINTING & PUBLICATION | 400 | - | 0.0% | 400 |
| 72212 POSTAGE | 50 | - | 0.0% | 50 |
| 72215 DUES | 700 | - | 0.0% | 700 |
| 72216 SUBSCRIPTIONS | 900 | 1,390 | 154.4% | (490) |
| 72218 SERVICE CONTRACTS | - | 5,195 | 100.0% | (5,195) |
| 72252 MAINT-EQUIPMENT | 8,000 | 1,966 | 24.6% | 6,034 |
| 72263 MICROCOMPUTER | 58,310 | 38,873 | 66.7% | 19,437 |
| 72264 VEHICLE REPAIRS | 15,460 | 7,036 | 45.5% | 8,424 |
| 72265 FUEL | 3,580 | 1,048 | 29.3% | 2,532 |
| 72267 RISK MANAGEMENT | 3,047 | 2,031 | 66.7% | 1,016 |
| 72271 RENTAL EQUIPMENT | 2,850 | 1,148 | 40.3% | 1,702 |
| 72272 RENTAL BUILDING | 46,840 | 31,227 | 66.7% | 15,613 |
| 72288 PROF FEES - MISC | 5,000 | 8,675 | 173.5% | (3,675) |
| 72290 EDUCATION AND TRAINING | 5,500 | 1,490 | 27.1% | 4,010 |
| TOTAL CONTRACTUAL | 156,717 | 103,277 | 65.9% | 53,440 |
| 75501 PUBLIC WORKS | 10,000 | 9,030 | 90.3% | 970 |
| 75520 SMALL EQUIPMENT AND TOOLS | 25,000 | 16,958 | 67.8% | 8,042 |
| 75524 CLOTHING | 2,100 | 1,088 | 51.8% | 1,012 |
| 75525 FOOD | 2,000 | 292 | 14.6% | 1,708 |
| 75526 FUEL AND LUBRICANTS | - | 829 | 100.0% | (829) |
| 75527 LINENS AND LAUNDRY | 1,000 | 669 | 66.9% | 331 |
| 75543 MAINT-EQUIPMENT | - | 483 | 100.0% | (483) |
| 75560 OFFICE GENERAL SUPPLIES | 4,300 | 1,029 | 23.9% | 3,271 |
| 75561 PHOTOGRAPHY & REPRODUCTN | 500 | - | 0.0% | 500 |
| 75565 PUBLIC RELATIONS | 3,500 | 0 | 0.0% | 3,500 |
| 75570 COMPUTER NONCAPITAL | 4,000 | 2,526 | 63.1% | 1,474 |
| 75592 FURNITURE AND EQUIPMENT NONCAPITAL | 900 | 349 | 38.8% | 551 |
| TOTAL SUPPLY | 53,300 | 33,252 | 62.4% | 20,048 |
| 77762 TRANS TO CAPITAL LEASE FUND | 6,402 | 4,268 | 66.7% | 2,134 |
| TOTAL OTHER | 6,402 | 4,268 | 66.7% | 2,134 |
| TOTAL PW ADMIN | 1,251,496 | 819,144 | 65.5% | 432,352 |

**YTD BUDGET REPORT
ENGINEERING DIVISION**

| | 2025 | 8/31/2025 | 66.7% | |
|------------------------------------|------------------|------------------|--------------|------------------|
| | BUDGET | EXPENDED | PERCENT USED | AVAILABLE BUDGET |
| 71112 SALARIES PERMANENT | 1,258,404 | 671,439 | 53.4% | 586,965 |
| 71113 SALARIES TEMPORARY | 6,000 | 68,168 | 1136.1% | (62,168) |
| 71122 SALARIES OVERTIME PERM | - | 7 | 100.0% | (7) |
| 71251 IMRF | 171,526 | 115,678 | 67.4% | 55,848 |
| 71253 UNEMPLOYMENT | 780 | 515 | 66.0% | 265 |
| 71262 WORKMEN'S COMPENSATION | 18,823 | 12,940 | 68.7% | 5,883 |
| 71263 HEALTH INSURANCE | 241,863 | 131,275 | 54.3% | 110,588 |
| 71264 LIFE INSURANCE | 1,612 | 437 | 27.1% | 1,175 |
| 71271 PARKING BENEFITS | 10,491 | 6,994 | 66.7% | 3,497 |
| TOTAL PERSONNEL | 1,709,499 | 1,007,451 | 58.9% | 702,048 |
| 72203 WIRELESS SERVICE | 9,800 | 6,869 | 70.1% | 2,931 |
| 72204 TELEPHONE-VOIP | 4,980 | 3,320 | 66.7% | 1,660 |
| 72211 PRINTING & PUBLICATION | 3,550 | 1,250 | 35.2% | 2,300 |
| 72212 POSTAGE | 100 | - | 0.0% | 100 |
| 72214 TRAVEL | 400 | 4,020 | 1005.0% | (3,620) |
| 72215 DUES | 2,218 | 2,735 | 123.3% | (517) |
| 72216 SUBSCRIPTIONS | 200 | 58 | 29.0% | 142 |
| 72218 SERVICE CONTRACTS | 13,000 | 10,625 | 81.7% | 2,375 |
| 72231 UTILITIES-BLDG & OFF | 500 | 5,480 | 1095.9% | (4,980) |
| 72252 MAINT-EQUIPMENT | 1,950 | 1,160 | 59.5% | 790 |
| 72263 MICROCOMPUTER | 159,210 | 106,140 | 66.7% | 53,070 |
| 72264 VEHICLE REPAIRS | 8,490 | 2,173 | 25.6% | 6,317 |
| 72265 FUEL | 3,710 | 1,285 | 34.6% | 2,425 |
| 72267 RISK MANAGEMENT | 12,127 | 8,085 | 66.7% | 4,042 |
| 72271 RENTAL EQUIPMENT | 6,000 | 3,931 | 65.5% | 2,069 |
| 72272 RENTAL BUILDING | 52,530 | 35,020 | 66.7% | 17,510 |
| 72273 RENTAL LAND | - | 3,196 | 100.0% | (3,196) |
| 72274 RENTAL CAR CENTRAL GARAGE | - | 2,621 | 100.0% | (2,621) |
| 72290 EDUCATION AND TRAINING | 25,000 | 3,993 | 16.0% | 21,007 |
| TOTAL CONTRACTUAL | 303,765 | 201,961 | 66.5% | 101,804 |
| 75501 PUBLIC WORKS | 500 | 720 | 144.0% | (220) |
| 75502 WATER SUPPLIES & MATERIAL | - | 115 | 100.0% | (115) |
| 75520 SMALL EQUIPMENT AND TOOLS | 14,400 | 3,345 | 23.2% | 11,056 |
| 75524 CLOTHING | 1,300 | 49 | 3.8% | 1,251 |
| 75525 FOOD | 2,100 | - | 0.0% | 2,100 |
| 75560 OFFICE GENERAL SUPPLIES | 1,500 | 1,312 | 87.4% | 188 |
| 75570 COMPUTER NONCAPITAL | 45,000 | 1,530 | 15.3% | 8,470 |
| 75592 EQUIP & FURNITURE NONCAPITAL | 10,000 | 226 | 0.3% | 74,574 |
| TOTAL SUPPLY | 74,800 | 7,296 | 9.8% | 67,504 |
| 77762 TRANF TO CAPITAL LEASE | 24,164 | 16,109 | 66.7% | 8,055 |
| TOTAL OTHER | 24,164 | 16,109 | 66.7% | 8,055 |
| TOTAL ENGINEERING DIVISION | 2,112,228 | 1,232,818 | 58.4% | 879,410 |

**YTD BUDGET REPORT
STREET DIVISION**

| | 2025 | 8/31/2025 | 66.7% PERCENT USED | AVAILABLE BUDGET |
|---------------------------------|-------------------|------------------|--------------------------|---------------------|
| | BUDGET | EXPENDED | | |
| 71112 SALARIES PERMANENT | 1,989,317 | 1,460,011 | 73.4% | 529,306 |
| 71113 SALARIES TEMPORARY | - | 8,536 | 100.0% | (8,536) |
| 71119 OUT OF CLASS PAY | 3,000 | 884 | 29.5% | 2,116 |
| 71122 SALARIES OVERTIME PERM | 250,000 | 81,415 | 32.6% | 168,585 |
| 71180 EMPLOYEE AGENCY WAGES | 50,000 | 17,630 | 35.3% | 32,370 |
| 71181 AFSCME WELLNES BONUS | 1,000 | 266 | 26.6% | 734 |
| 71251 IMRF | 265,661 | 217,234 | 81.8% | 48,427 |
| 71253 UNEMPLOYMENT | 1,696 | 1,232 | 72.7% | 464 |
| 71262 WORKMEN'S COMPENSATION | 105,950 | 98,082 | 92.6% | 7,868 |
| 71263 HEALTH INSURANCE | 613,353 | 413,993 | 67.5% | 199,360 |
| 71264 LIFE INSURANCE | 3,520 | 1,225 | 34.8% | 2,295 |
| TOTAL PERSONNEL | 1,294,180 | 2,300,507 | 177.8% | (1,006,327) |
| 72203 WIRELESS SERVICE | 11,000 | 4,529 | 41.2% | 6,471 |
| 72204 TELEPHONE-VOIP | 4,980 | 3,320 | 66.7% | 1,660 |
| 72214 TRAVEL | 390 | 71 | 18.2% | 319 |
| 72215 DUES | 2,800 | 1,065 | 38.0% | 1,735 |
| 72217 ADVERTISING | 100 | - | 0.0% | 100 |
| 72218 SERVICE CONTRACTS | 3,422,000 | 2,116,701 | 61.9% | 1,305,299 |
| 72231 UTILITIES-BLDG & OFF | 30,000 | 12,946 | 43.2% | 17,054 |
| 72263 MICROCOMPUTER | 83,710 | 55,807 | 66.7% | 27,903 |
| 72264 VEHICLE REPAIRS | 1,079,900 | 430,360 | 39.9% | 649,540 |
| 72265 FUEL | 189,790 | 91,711 | 48.3% | 98,079 |
| 72267 RISK MANAGEMENT | 347,885 | 231,923 | 66.7% | 115,962 |
| 72271 RENTAL EQUIPMENT | 14,200 | 8,209 | 57.8% | 5,991 |
| 72272 RENTAL BUILDING | 600,130 | 400,087 | 66.7% | 200,043 |
| 72290 EDUCATION AND TRAINING | 5,000 | 602 | 12.0% | 4,398 |
| TOTAL CONTRACTUAL | 5,791,985 | 3,358,567 | 58.0% | 2,433,418 |
| 75501 PUBLIC WORKS | 1,966,000 | 1,105,123 | 56.2% | 860,877 |
| 75520 SMALL EQUIPMENT AND TOOLS | 18,400 | 9,853 | 53.5% | 8,547 |
| 75521 MEDICINE AND DRUGS | 500 | - | 0.0% | 500 |
| 75524 CLOTHING | 8,950 | 4,824 | 53.9% | 4,126 |
| 75525 FOOD | 3,000 | 1,225 | 40.8% | 1,775 |
| 75526 FUEL AND LUBRICANTS | - | 53 | 100.0% | (53) |
| 75527 LINENS AND LAUNDRY | 1,000 | - | 0.0% | 1,000 |
| 75560 OFFICE GENERAL SUPPLIES | 3,500 | 2,021 | 57.7% | 1,479 |
| 75570 COMPUTER NONCAPITAL | 4,000 | 1,226 | 30.6% | 2,774 |
| TOTAL SUPPLY | 2,005,350 | 1,141,424 | 56.9% | 863,926 |
| 76728 WATER TRANSFER | 107,570 | 71,713 | 66.7% | 35,857 |
| 77762 TRANS TO CAPITAL LEASE | 297,125 | 198,083 | 66.7% | 99,042 |
| TOTAL OTHER | 404,695 | 269,797 | 66.7% | 134,898 |
| 79922 VEHICLE & OPERATING EQUIP | 1,735,000 | 892,163 | 51.4% | 842,837 |
| TOTAL OTHER | 1,735,000 | 892,163 | 51.4% | 842,837 |
| TOTAL STREET DIVISION | 11,231,210 | 7,962,458 | 70.9% | 3,268,752 |

**YTD BUDGET REPORT
TRAFFIC DIVISION**

| ACCOUNT | 2025 BUDGET | 8/31/2025 EXPENDED | 66.7% PERCENT USED | AVAILABLE BUDGET |
|-----------------------------------|------------------|-----------------------|--------------------------|---------------------|
| 71112 SALARIES PERMANENT | 821,177 | 563,892 | 68.7% | 257,285 |
| 71119 OUT OF CLASS PAY | 500 | 49 | 9.9% | 451 |
| 71122 SALARIES OVERTIME PERM | 60,000 | 12,840 | 21.4% | 47,160 |
| 71251 IMRF | 111,932 | 104,482 | 93.3% | 7,450 |
| 71253 UNEMPLOYMENT | 585 | 391 | 66.9% | 194 |
| 71262 WORKMEN'S COMPENSATION | 43,659 | 30,249 | 69.3% | 13,410 |
| 71263 HEALTH INSURANCE | 165,530 | 124,372 | 75.1% | 41,158 |
| 71264 LIFE INSURANCE | 1,212 | 356 | 29.3% | 856 |
| 71292 CELL PHONE ALLOWANCE | 1,040 | 408 | 39.2% | 632 |
| TOTAL PERSONNEL | 1,205,635 | 837,040 | 69.4% | 368,595 |
| 72203 WIRELESS SERVICE | 10,700 | 4,549 | 42.5% | 6,151 |
| 72204 TELEPHONE-VOIP | 4,980 | 3,320 | 66.7% | 1,660 |
| 72211 PRINTING & PUBLICATION | 250 | - | 0.0% | 250 |
| 72212 POSTAGE | 750 | 54 | 7.2% | 696 |
| 72214 TRAVEL | 1,500 | 1,136 | 75.8% | 364 |
| 72215 DUES | 900 | 340 | 37.8% | 560 |
| 72216 SUBSCRIPTIONS | 3,750 | - | 0.0% | 3,750 |
| 72217 ADVERTISING | 250 | - | 0.0% | 250 |
| 72218 SERVICE CONTRACTS | 124,000 | 48,634 | 39.2% | 75,366 |
| 72232 UTILITIES-STR LIGHT | 2,035,000 | 1,625,950 | 79.9% | 409,050 |
| 72252 MAINT-EQUIPMENT | 6,000 | - | 0.0% | 6,000 |
| 72263 MICROCOMPUTER | 84,470 | 56,313 | 66.7% | 28,157 |
| 72264 VEHICLE REPAIRS | 96,000 | 27,814 | 29.0% | 68,186 |
| 72265 FUEL | 33,600 | 13,095 | 39.0% | 20,505 |
| 72267 RISK MANAGEMENT | 120,713 | 80,475 | 66.7% | 40,238 |
| 72271 RENTAL EQUIPMENT | 1,950 | 1,520 | 77.9% | 430 |
| 72272 RENTAL BUILDING | 195,040 | 130,027 | 66.7% | 65,013 |
| 72274 RENTAL CAR CENTRAL GARAGE | - | 7,133 | 100.0% | (7,133) |
| 72290 EDUCATION AND TRAINING | 4,500 | 3,695 | 82.1% | 805 |
| TOTAL CONTRACTUAL | 2,724,353 | 2,004,055 | 73.6% | 720,298 |
| 75501 PUBLIC WORKS | 775,000 | 254,239 | 32.8% | 520,761 |
| 75520 SMALL EQUIPMENT AND TOOLS | 11,000 | 2,005 | 18.2% | 8,995 |
| 75524 CLOTHING | 2,700 | 1,460 | 54.1% | 1,240 |
| 75525 FOOD | - | 188 | 100.0% | (188) |
| 75527 LINENS AND LAUNDRY | 500 | 124 | 24.8% | 376 |
| 75543 MAINT-EQUIPMENT | 1,000 | - | 0.0% | 1,000 |
| 75560 OFFICE GENERAL SUPPLIES | 1,500 | 664 | 44.3% | 836 |
| 75570 COMPUTER NONCAPITAL | 7,000 | - | 0.0% | 7,000 |
| TOTAL SUPPLIES | 798,700 | 258,681 | 32.4% | 540,019 |
| 77727 PURCHASE SERVICE TRANF | 77,190 | 51,460 | 66.7% | 25,730 |
| 77762 TRANS TO CAPITAL LEASE FUND | 68,842 | 45,895 | 66.7% | 22,948 |
| TOTAL OTHER | 146,032 | 97,355 | 66.7% | 48,678 |
| 79922 VEHICLE & OPERATING EQUIP | 405,000 | - | 0.0% | 405,000 |
| TOTAL OTHER | 405,000 | - | 0.0% | 405,000 |
| TOTAL TRAFFIC DIVISION | 5,279,720 | 3,197,131 | 60.6% | 2,082,589 |

**YTD BUDGET REPORT
CIP FUND**

| | 2025 BUDGET | 8/31/2025 EXPENDED | 66.7% PERCENT USED | AVAILABLE BUDGET |
|---------------------------------|------------------|-----------------------|--------------------------|---------------------|
| 71112 SALARIES PERMANENT | 1,378,516 | 977,471 | 70.9% | 401,046 |
| 71113 SALARIES TEMPORARY | 22,000 | 25,831 | 117.4% | (3,831) |
| 71119 OUT OF CLASS PAY | 2,000 | - | 0.0% | 2,000 |
| 71122 SALARIES OVERTIME PERM | 2,000 | 4,537 | 226.9% | (2,537) |
| 71251 IMRF | 198,319 | 142,161 | 71.7% | 56,158 |
| 71253 UNEMPLOYMENT | 815 | 541 | 66.4% | 274 |
| 71262 WORKMEN'S COMPENSATION | 20,760 | 14,629 | 70.5% | 6,131 |
| 71263 HEALTH INSURANCE | 428,674 | 218,111 | 50.9% | 210,563 |
| 71264 LIFE INSURANCE | 1,634 | 548 | 33.5% | 1,086 |
| 71271 PARKING BENEFITS | 10,275 | 6,850 | 66.7% | 3,425 |
| TOTAL PERSONNEL | 2,064,993 | 1,390,679 | 67.3% | 674,314 |
| 72203 WIRELESS SERVICE | 17,000 | 5,528 | 32.5% | 11,472 |
| 72204 TELEPHONE-VOIP | 4,080 | 2,720 | 66.7% | 1,360 |
| 72211 PRINTING & PUBLICATION | 1,500 | 2,352 | 156.8% | (852) |
| 72212 POSTAGE | 250 | 21 | 8.6% | 229 |
| 72213 TELEPHONE | 1,200 | - | 0.0% | 1,200 |
| 72214 TRAVEL | 2,000 | 28 | 1.4% | 1,972 |
| 72215 DUES | 104,000 | 70,111 | 67.4% | 33,889 |
| 72216 SUBSCRIPTIONS | 1,000 | 1,450 | 145.0% | (450) |
| 72217 ADVERTISING | 250 | - | 0.0% | 250 |
| 72218 SERVICE CONTRACTS | 500 | 344,629 | 68925.8% | (344,129) |
| 72263 MICROCOMPUTER | 89,550 | 59,700 | 66.7% | 29,850 |
| 72264 VEHICLE REPAIRS | 27,090 | 7,573 | 28.0% | 19,517 |
| 72265 FUEL | 13,190 | 4,781 | 36.2% | 8,409 |
| 72267 RISK MANAGEMENT | 291,215 | 194,143 | 66.7% | 97,072 |
| 72271 RENTAL EQUIPMENT | 2,000 | 1,578 | 78.9% | 422 |
| 72272 RENTAL BUILDING | 234,000 | 156,000 | 66.7% | 78,000 |
| 72274 RENTAL CAR CENTRAL GARAGE | - | 14,322 | 100.0% | (14,322) |
| 72281 PROF FEE LEGAL | - | 3,018 | 100.0% | (3,018) |
| 72282 PROF FEE AUDITING | 33,660 | - | 0.0% | 33,660 |
| 72283 ENGINEERING-DESIGN | - | 10,697 | 100.0% | (10,697) |
| 72286 ENGINEERING-CONSTRUCTION | - | 28,200 | 100.0% | (28,200) |
| 72290 EDUCATION AND TRAINING | 10,000 | 2,578 | 25.8% | 7,422 |
| 72294 PUBLIC RELATIONS | 100 | - | 0.0% | 100 |
| 72299 MISCELLANEOUS CONTRACTUAL | 100 | - | 0.0% | 100 |
| TOTAL CONTRACTUAL | 832,685 | 909,430 | 109.2% | (76,745) |
| 75501 PUBLIC WORKS | - | 45,645 | 100.0% | (45,645) |
| 75502 WATER SUPPLIES & MATERIAL | - | 8,166 | 100.0% | (8,166) |
| 75509 BOOKS | 2,000 | - | 0.0% | 2,000 |
| 75520 SMALL EQUIPMENT AND TOOLS | 21,500 | 18,865 | 87.7% | 2,635 |
| 75524 CLOTHING | 500 | - | 0.0% | 500 |

**YTD BUDGET REPORT
CIP FUND**

| | 2025 BUDGET | 8/31/2025 EXPENDED | 66.7% PERCENT USED | AVAILABLE BUDGET |
|---------------------------------------|-------------------|-----------------------|--------------------------|---------------------|
| 75525 FOOD | 200 | - | 0.0% | 200 |
| 75560 OFFICE GENERAL SUPPLIES | - | 24 | 100.0% | (24) |
| 75561 PHOTOGRAPHY & REPRODUCTION | 1,500 | - | 0.0% | 1,500 |
| 75570 COMPUTER NONCAPITAL | 90,200 | 32,687 | 36.2% | 57,513 |
| 75938 MAINT-INFRASTRUCTURE-NON CAP | - | 3,130,320 | 100.0% | (3,130,320) |
| TOTAL SUPPLIES | 115,900 | 3,235,707 | 2791.8% | (3,119,807) |
| 76760 PROPERTY TAXES | - | 4,650 | 100% | (4,650) |
| 76790 MISCELLANEOUS | - | 1,700 | 100% | (1,700) |
| 76794 SALES TAX REBATE | 180,000 | - | 0.0% | 180,000 |
| 76796 STATE ADMIN FEE/IDOR COLLECTION | 250,000 | 237,680 | 95.1% | 12,320 |
| 77719 TRANSFER TO GENERAL FUND | - | 887,420 | 100% | (887,420) |
| 77725 PURCH SERVICE-GENERAL FD | 637,210 | 424,807 | 66.7% | 212,403 |
| TOTAL OTHER | 1,067,210 | 1,556,257 | 145.8% | (489,047) |
| 79901 LAND ACQUISITION | - | 25,101 | 100.0% | (25,101) |
| 79902 LAND IMPROVEMENT | - | 286,011 | 100.0% | (286,011) |
| 79918 WATER IN-HOUSE CIP | - | 542,613 | 100.0% | (542,613) |
| 79938 CONSTRUCTION PROJECT | 66,852,767 | 7,287,723 | 10.9% | 59,565,044 |
| 79940 ENG SERVICES-DESIGN | - | 2,127,571 | 100.0% | (2,127,571) |
| 79941 ENG SERVICES-CONSTRUCTION | - | 569,611 | 100.0% | (569,611) |
| TOTAL CAPITAL | 66,852,767 | 10,838,629 | 16.2% | 56,014,138 |
| TOTAL CIP FUND | 70,933,555 | 17,930,702 | 25.3% | 53,002,853 |

| MERCHANT | AMOUNT | EMPLOYEE | DEPARTMENT | FUND | TRAINING | DATES | LOCATION |
|---------------------------|----------|---|-------------------------------|-------------------------|--|----------------------|-----------------------|
| THE CAPITAL SUITES HTL | 608.88 | MARTINEZ, MANLEY | CD ADMINISTRATION | CD-BLOCK GRANT | HOTEL FOR NCDA REGION V CONFERENCE | 04/20-04/24/25 | COLUMBUS, OH |
| TAMARACK INSTI | 203.63 | BARB CHIDLEY | CD ADMINISTRATION | GENERAL FUND | EVALUATION 201: IMPACT EVALUATION | 5/29/2025 | ONLINE |
| IL TOLLWAY-WEB-UNPD TOLL | 8.10 | ENGINEERING TEAM | CIP | CIP | IPASS REPLENISHMENT | 4/29/25 | ROCKFORD, IL |
| LIFE DECISIONS | 125.00 | ALD. TAMIR BELL | CITY COUNCIL | GENERAL FUND | LIFE DECISIONS' SPRING SUMMIT | 05/01/2025 | ROCKFORD, IL |
| LIFE DECISIONS | 125.00 | ALD. JEFF BAILEY | CITY COUNCIL | GENERAL FUND | LIFE DECISIONS TRAINING SUMMIT | 05/01/2025 | ROCKFORD, IL |
| COACH USA INC | 106.90 | JORDAN MOYER, RODOLFO MORENO | CONSTR & DEV SERVICES | GENERAL FUND | AVOLVE INSPIRE-USER CONFER. 2025 TRANSPORT TO & FROM AIRPORT | 4/28/2025-04/30/2025 | SCOTTSDALE,AZ |
| BUILDING AND FIRE CODE | 360.00 | CURT RUTHE | CONSTR & DEV SERVICES | GENERAL FUND | B AND F CODE ACADEMY ICC - IRC CERTIFICATION RENEWAL | 04/09/2025 | ROCKFORD,IL |
| PAYPAL *ILLINOISMEC | 30.00 | THOMAS EARLYWINE | CONSTR & DEV SERVICES | GENERAL FUND | ICC IL MECH INSPECTORS ASSOCIATION TRAINING | 04/15/2025 | NORMAL, IL |
| PAYPAL *ILLINOISMEC | 30.00 | PATECIA RUSH | CONSTR & DEV SERVICES | GENERAL FUND | ICC IL MECH INSPECTORS ASSOCIATION TRAINING | 04/15/2025 | NORMAL, IL |
| SQ *ILLINOIS PLUMBING EDU | 90.00 | THOMAS EARLYWINE | CONSTR & DEV SERVICES | GENERAL FUND | IPEA 2025 6 HOUR CEU TRAINING | 005/09/2025 | EAST PEORIA, IL |
| FSP*SUBURBAN BUILDING OFF | 30.00 | NELSON SJOSTROM | CONSTR & DEV SERVICES | GENERAL FUND | SBOC MAY MONTHLY MEETING & TRAINING | 05/15/2025 | WOODBRIDGE, IL |
| INT'L CODE COUNCIL INC | 240.00 | PATECIA RUSH | CONSTR & DEV SERVICES | GENERAL FUND | ICC MECHANICAL INSPECTORS EXAM | 05/02/2025 | ONLINE |
| LIFE DECISIONS | 250.00 | I.WALLACE & A.DILLON | DOMESTIC & COMMUNITY VIOLENCE | FAMILY PEACE CENTER | (2) REGISTRTRON FOR SPRING SUMMIT | 5/01/25 | ROCKFORD |
| PSI EXAMS | 175.00 | EVAN BRATINA | ENGINEERING | GENERAL FUND | UNMANNED AIRCRAFT GENERAL TEST(UAG) | 4/25/2025 | ROCKFORD, IL |
| PAYPAL *TENDACADEMY | 188.12 | FPC STAFF | FAMILY PEACE CENTER | FAMILY PEACE CENTER | FPC STAFF TRAINING | 4/28/25 | ONLINE |
| CYPHERWORK INC | 275.00 | FPC VOLUNTEER ARYN MANAGBANAG | FAMILY PEACE CENTER | FAMILY PEACE CENTER | DV TRAINING | 5/01/25 | ONLINE |
| RKFD CHAMB* IL | 60.00 | CARRIE HAGERTY | FINANCE | GENERAL FUND | MAYOR'S BUSINESS ADDRESS | 04/24/25 | ROCKFORD, IL |
| IAAI | 203.00 | NATE CARDEN | FIRE | GENERAL FUND | EVIDENCE COLLECTION TECHNICIAN | 05/31/25 | ROCKFORD IL |
| UBER *TRIP | 10.00 | MATT CORDONNIER+4 | FIRE | GENERAL FUND | CPSE-EXCELLENCE CONFERENCE -UBER TIP FOR TRANSPORT FROM HOTEL TO AIRPORT | 03/31/25-04/04/25 | ORLANDO, FL |
| UBER *TRIP | 40.34 | MATT CORDONNIER+4 | FIRE | GENERAL FUND | CPSE-EXCELLENCE CONFERENCE -UBER FEE FOR TRANSPORT FROM HOTEL TO AIRPORT | 03/31/25-04/04/25 | ORLANDO, FL |
| CARIBE ROYALE RESORT SUT | 1,255.52 | JESSICA BODELL | FIRE | GENERAL FUND | CPSE-EXCELLENCE CONFERENCE | 04/01/25-04/04/25 | ORLANDO, FL |
| CARIBE ROYALE RESORT SUT | 1,255.52 | TREVOR HOGAN | FIRE | GENERAL FUND | CPSE-EXCELLENCE CONFERENCE | 04/01/25-04/04/25 | ORLANDO, FL |
| CARIBE ROYALE RESORT SUT | 1,255.52 | MATT RENFRO | FIRE | GENERAL FUND | CPSE-EXCELLENCE CONFERENCE | 04/01/25-04/04/25 | ORLANDO, FL |
| CARIBE ROYALE RESORT SUT | 1,255.52 | REBECCA TYO | FIRE | GENERAL FUND | CPSE-EXCELLENCE CONFERENCE | 04/01/25-04/04/25 | ORLANDO, FL |
| CARIBE ROYALE RESORT SUT | 1,255.52 | MATT CORDONNIER | FIRE | GENERAL FUND | CPSE-EXCELLENCE CONFERENCE | 04/01/25-04/04/25 | ORLANDO, FL |
| LOT A EPS | 178.00 | MATT CORDONNIER+4 | FIRE | GENERAL FUND | CPSE-EXCELLENCE CONFERENCE -PARKING FEE AT O'HARE | 03/31/25-04/04/25 | ORLANDO, FL |
| AMERICAN AI 0010268507430 | 40.00 | REBECCA TYO | FIRE | GENERAL FUND | CPSE BAGGAGE FEE | 03/31/25-04/04/25 | ORLANDO, FL |
| AMERICAN AI 0010268507434 | 40.00 | JESSICA BODELL | FIRE | GENERAL FUND | CPSE BAGGAGE FEE | 03/31/25-04/04/25 | ORLANDO, FL |
| EB *2025 GREEN DRIVES | 81.88 | JEFF SPENCE | GARAGE | CENTRAL GARAGE | GREEN DRIVES CONFERENCE & EXPO | 05/08/25 | ALSIP, IL |
| RKFD CHAMB* IL | 60.00 | ANQUETTE PARHAM | HEALTH & HUMAN SERVICES | HEALTH & HUMAN SERVICES | MAYOR'S BUSINESS ADDRESS | 04/24/25 | ROCKFORD, IL |
| HIGHSCOPE EDUCATIONAL RES | 169.46 | ANGIE TORRE | HEALTH & HUMAN SERVICES | HEALTH & HUMAN SERVICES | HIGHSCOPE ANNUAL CONFERENCE | 4/23-4/25/25 | VIRTUAL |
| HIGHSCOPE EDUCATIONAL RES | 59.54 | ANGIE TORRE | HEALTH & HUMAN SERVICES | HEALTH & HUMAN SERVICES | HIGHSCOPE ANNUAL CONFERENCE | 4/23-4/25/25 | VIRTUAL |
| IL TOLLWAY -PAY BY PLATE | 12.00 | HHS STAFF | HEALTH & HUMAN SERVICES | HEALTH & HUMAN SERVICES | TOLLS WHILE DRIVING A FAMILY TO A DENTAL APPT. | VARIOUS | VARIOUS |
| HEAD START ERSEA BOOT | 368.52 | YESENIA CONTRERAS, JESSICA CORNILSEN | HEALTH & HUMAN SERVICES | HEALTH & HUMAN SERVICES | ERSEA BOOT CAMP | 5/20-5/22/25 | VIRTUAL |
| HEAD START ERSEA BOOT | 129.48 | YESENIA CONTRERAS, JESSICA CORNILSEN | HEALTH & HUMAN SERVICES | HEALTH & HUMAN SERVICES | ERSEA BOOT CAMP | 5/20-5/22/25 | VIRTUAL |
| CONFERENCE REGIS | 2,000.00 | A WALKER,S KOPP | HEALTH & HUMAN SERVICES | HEALTH & HUMAN SERVICES | 2025 NATIONAL HEALTHCARE FOR THE HOMELESS CONFERENCE | 5/12/25-5/14/25 | BALTIMORE MD |
| EXPEDIA 73076220845242 | 11.77 | A WALKER,S KOPP | HEALTH & HUMAN SERVICES | HEALTH & HUMAN SERVICES | TRAVEL FOR 2025 NATIONAL HEALTHCARE FOR THE HOMELESS CONFERENCE | 5/12/25-5/14/25 | BALTIMORE MD |
| AMERICAN AIR0017224855631 | 213.49 | A WALKER,S KOPP | HEALTH & HUMAN SERVICES | HEALTH & HUMAN SERVICES | AIR FARE FOR 2025 NATIONAL HEALTHCARE FOR THE HOMELESS CONFERENCE | 5/12/25-5/14/25 | BALTIMORE MD |
| AMERICAN AIR0017224855632 | 213.49 | A WALKER,S KOPP | HEALTH & HUMAN SERVICES | HEALTH & HUMAN SERVICES | AIR FARE FOR 2025 NATIONAL HEALTHCARE FOR THE HOMELESS CONFERENCE | 5/12/25-5/14/25 | BALTIMORE MD |
| UNITED 01624776068596 | 133.49 | A WALKER,S KOPP | HEALTH & HUMAN SERVICES | HEALTH & HUMAN SERVICES | AIR FARE FOR 2025 NATIONAL HEALTHCARE FOR THE HOMELESS CONFERENCE | 5/12/25-5/14/25 | BALTIMORE MD |
| UNITED 0162476068597 | 133.49 | A WALKER,S KOPP | HEALTH & HUMAN SERVICES | HEALTH & HUMAN SERVICES | AIR FARE FOR 2025 NATIONAL HEALTHCARE FOR THE HOMELESS CONFERENCE | 5/12/25-5/14/25 | BALTIMORE MD |
| UNITED 0164487084178 | 29.99 | A WALKER,S KOPP | HEALTH & HUMAN SERVICES | HEALTH & HUMAN SERVICES | SEAT FOR 2025 NATIONAL HEALTHCARE FOR THE HOMELESS CONFERENCE | 5/12/25-5/14/25 | BALTIMORE MD |
| UNITED 0164487084179 | 22.99 | A WALKER,S KOPP | HEALTH & HUMAN SERVICES | HEALTH & HUMAN SERVICES | SEAT FOR 2025 NATIONAL HEALTHCARE FOR THE HOMELESS CONFERENCE | 5/12/25-5/14/25 | BALTIMORE MD |
| RKFD CHAMB* IL | 60.00 | SHURICE HUNTER | HUMAN RESOURCES | GENERAL FUND | MAYOR'S BUSINESS ADDRESS | 04/24/25 | ROCKFORD, IL |
| 42925 INTERMITTENT L | 197.00 | SHURICE HUNTER | HUMAN RESOURCES | GENERAL FUND | FMLA INTERMITTENT LEAVE COMPLIANCE WORKSHOP | 04/29/2025 | WEBINAR |
| PAYPAL * WINNEBAGOCO | 15.00 | JOSH VERSLUYS | LEGAL | GENERAL FUND | SEALING AND IMPOUNDING COURT FILES CLE | ONLINE | ONLINE |
| DOUBLETREE AB LINCOLN | 153.90 | THOMAS MCNAMARA | MAYOR'S OFFICE | GENERAL FUND | HOTEL STAY FOR IML LOBBY DAY AND SPRING BOARD MEETING | 4/2/25 - 4/3/25 | SPRINGFIELD, IL |
| ILLINOIS CITY COUNTY M | 35.00 | TODD CAGNONI | MAYOR'S OFFICE | GENERAL FUND | PROFESSIONAL DEVELOPMENT SESSION | 5/07/25 | ONLINE |
| APAIL.THINKIFIC.COM | 75.00 | TODD CAGNONI | MAYOR'S OFFICE | GENERAL FUND | SPRING CONFERENCE | 4/24/25 - 4/25/25 | VIRTUAL |
| CIT INTERNATIONAL | 1,350.00 | FABIANI, KRISTINE; MACE, BRIAN | POLICE | GENERAL FUND | REGISTRATION FOR INTERNATIONAL CIT CONFERENCE | 8/10-8/14/25 | ANAHEIM, CA |
| WIU-ILETSBEI | 480.00 | MACE, BRIAN; KENGOTT, ASHLEY; KOHANYI, NATHAN | POLICE | GENERAL FUND | REGISTRATION FOR ILLINOIS CIT CONFERENCE | 6/25-6/26/25 | PEORIA, IL |
| UNITED 0162474929905 | 494.37 | FABIANI, KRISTINE | POLICE | GENERAL FUND | FLIGHT FOR INTERNATIONAL CIT CONFERENCE | 8/10-8/14/25 | ANAHEIM, CA |
| UNITED 0162474929906 | 494.37 | MACE, BRIAN | POLICE | GENERAL FUND | FLIGHT FOR INTERNATIONAL CIT CONFERENCE | 8/10-8/14/25 | ANAHEIM, CA |
| UNITED 0164485988400 | 35.00 | FABIANI, KRISTINE | POLICE | GENERAL FUND | LUGGAGE FOR INTERNATIONAL CIT CONFERENCE | 8/10-8/14/25 | ANAHEIM, CA |
| UNITED 0164485988401 | 35.00 | FABIANI, KRISTINE | POLICE | GENERAL FUND | LUGGAGE FOR INTERNATIONAL CIT CONFERENCE | 8/10-8/14/25 | ANAHEIM, CA |
| UNITED 0164485988402 | 35.00 | MACE, BRIAN | POLICE | GENERAL FUND | LUGGAGE FOR INTERNATIONAL CIT CONFERENCE | 8/10-8/14/25 | ANAHEIM, CA |
| UNITED 0164485988403 | 35.00 | MACE, BRIAN | POLICE | GENERAL FUND | LUGGAGE FOR INTERNATIONAL CIT CONFERENCE | 8/10-8/14/25 | ANAHEIM, CA |
| MILE HIGH SHOOTING ACCESS | 600.00 | CASTANEDA, ABEL; MAGNUSON, CORY | POLICE | GENERAL FUND | REGISTRATION FOR ACCURACY INTNL RIFLE ARMORERS COURSE | 4/30/2025 | HOFFMAN ESTATES, IL |
| AP020 - PF O'HARE ONLINE | 112.50 | MACE, BRIAN | POLICE | GENERAL FUND | PRE-FLIGHT PARKING FOR INTERNATIONAL CIT CONFERENCE | 8/10-8/14/25 | ANAHEIM, CA |
| HOLIDAY INN EXP WENTZVIL | 381.74 | PRESLEY, JAMES | POLICE | GENERAL FUND | HOTEL FOR NTOA TRAINING | 4/9-4/10/25 | LAKE ST. LOUIS, MO |
| HAMPTON INNS | 277.76 | COX, ADAM | POLICE | GENERAL FUND | HOTEL FOR IDEOA TRAINING CONFERENCE | 4/9-4/11/25 | PEORIA, IL |
| HAMPTON INNS | 277.76 | SCHNEIDER, MICHAEL | POLICE | GENERAL FUND | HOTEL FOR IDEOA TRAINING CONFERENCE | 4/9-4/11/25 | PEORIA, IL |
| THE FAIRMONT HOTEL CHICA | 432.03 | REDD, CARLA | POLICE | GENERAL FUND | HOTEL FOR LABOR ARBITRATION CONFERENCE | 4/10-4/11/25 | CHICAGO, IL |
| HOLIDAY INN EXP & SUITES | 306.36 | MURPHY, AARON | POLICE | GENERAL FUND | HOTEL FOR NUCPS VEHICLE DYNAMICS COURSE | 4/7-4/11/25 | LAKE ZURICH, IL |
| FAIRMONT HOTEL VANCOUVER | 1,184.03 | ADAMS, JOCELYN | POLICE | GENERAL FUND | HOTEL FOR LEIU/IALEIA CONFERENCE | 4/6-4/11/25 | VANCOUVER, BC, CANADA |
| UNITED 0162477176525 | 43.27 | WOODS, SHERRELL | POLICE | GENERAL FUND | FLIGHT FARE DIFFERENCE FOR NATIONAL LAW ENFORCEMENT MEMORIAL EVENTS | 5/10-5/15/25 | WASHINGTON, DC |
| UNITED 0162477176528 | 43.27 | SQUIRES, BRIAN | POLICE | GENERAL FUND | FLIGHT FARE DIFFERENCE FOR NATIONAL LAW ENFORCEMENT MEMORIAL EVENTS | 5/10-5/15/25 | WASHINGTON, DC |
| UNITED 0162477176535 | 43.27 | HORMIG, KELLY | POLICE | GENERAL FUND | FLIGHT FARE DIFFERENCE FOR NATIONAL LAW ENFORCEMENT MEMORIAL EVENTS | 5/10-5/15/25 | WASHINGTON, DC |
| UNITED 0162477176537 | 43.27 | KIELY, GARY | POLICE | GENERAL FUND | FLIGHT FARE DIFFERENCE FOR NATIONAL LAW ENFORCEMENT MEMORIAL EVENTS | 5/10-5/15/25 | WASHINGTON, DC |
| UNITED 0162477176539 | 43.27 | WATTON, DANIEL | POLICE | GENERAL FUND | FLIGHT FARE DIFFERENCE FOR NATIONAL LAW ENFORCEMENT MEMORIAL EVENTS | 5/10-5/15/25 | WASHINGTON, DC |
| UNITED 0162477176540 | 43.27 | VARGAS, JONATHAN | POLICE | GENERAL FUND | FLIGHT FARE DIFFERENCE FOR NATIONAL LAW ENFORCEMENT MEMORIAL EVENTS | 5/10-5/15/25 | WASHINGTON, DC |
| FAIRMONT HOTEL VANCOUVER | 203.05 | ADAMS, JOCELYN | POLICE | GENERAL FUND | HOTEL FOR LEIU/IALEIA CONFERENCE | 4/11-4/12/25 | VANCOUVER, BC, CANADA |
| DALLAS CHILDRENS ADVOCACY | 895.00 | SUNDLY, MELISSA | POLICE | GENERAL FUND | REGISTRATION FOR CRIMES AGAINST CHILDREN CONFERENCE | 8/3-8/7/25 | DALLAS, TX |
| UNITED 0162477620578 | 389.21 | SUNDLY, MELISSA | POLICE | GENERAL FUND | FLIGHT FOR CRIMES AGAINST CHILDREN CONFERENCE | 8/3-8/7/25 | DALLAS, TX |
| UNITED 0164488623769 | 35.00 | SUNDLY, MELISSA | POLICE | GENERAL FUND | LUGGAGE FOR CRIMES AGAINST CHILDREN CONFERENCE | 8/3-8/7/25 | DALLAS, TX |

| MERCHANT | AMOUNT | EMPLOYEE | DEPARTMENT | FUND | TRAINING | DATES | LOCATION |
|---------------------------|------------------|-------------------------------|------------|--------------|---|-------------------|-----------------|
| UNITED 0164488623770 | 35.00 | SUNDLY, MELISSA | POLICE | GENERAL FUND | LUGGAGE FOR CRIMES AGAINST CHILDREN CONFERENCE | 8/3-8/7/25 | DALLAS, TX |
| LA QUINTA MOTOR INNS | 264.48 | CASE, KEVIN | POLICE | GENERAL FUND | HOTEL FOR ITOA COURSE | 4/14-4/16/25 | JOLIET, IL |
| AP020 - PF O'HARE ONLINE | 165.00 | WATTON, DANIEL | POLICE | GENERAL FUND | PRE-FLIGHT PARKING FOR NATIONAL LAW ENFORCEMENT MEMORIAL EVENTS | 5/10-5/15/25 | WASHINGTON, DC |
| AP020 - PF O'HARE ONLINE | 165.00 | WOODS, SHERRELL | POLICE | GENERAL FUND | PRE-FLIGHT PARKING FOR NATIONAL LAW ENFORCEMENT MEMORIAL EVENTS | 5/10-5/15/25 | WASHINGTON, DC |
| AP020 - PF O'HARE ONLINE | 138.25 | SUNDLY, MELISSA | POLICE | GENERAL FUND | PRE-FLIGHT PARKING FOR CRIMES AGAINST CHILDREN CONFERENCE | 8/3-8/7/25 | DALLAS, TX |
| THE FAIRMONT HOTEL CHICA | 292.33 | REFFETT, ROBERT | POLICE | GENERAL FUND | HOTEL FOR LABOR ARBITRATION CONFERENCE | 4/10-4/11/25 | CHICAGO, IL |
| THE FAIRMONT HOTEL CHICA | 81.01 | EAGLESON, TY | POLICE | GENERAL FUND | PARKING FOR LABOR ARBITRATION CONFERENCE | 4/10-4/11/25 | CHICAGO, IL |
| THE FAIRMONT HOTEL CHICA | 81.01 | TORRANCE, EDDIE | POLICE | GENERAL FUND | PARKING FOR LABOR ARBITRATION CONFERENCE | 4/10-4/11/25 | CHICAGO, IL |
| FBI LEEDA INC | 795.00 | KING, EDWARD | POLICE | GENERAL FUND | REGISTRATION FOR FBI-LEEDA | 5/12-5/16/25 | MUNDELEIN, IL |
| SQ *NATIONAL TACTICAL OFF | 724.00 | DILLARD, BRANDON | POLICE | GENERAL FUND | REGISTRATION FOR NTOA TRAINING | 5/19-5/23/25 | NASHVILLE, TN |
| UNITED 0162478497668 | 378.32 | DILLARD, BRANDON | POLICE | GENERAL FUND | FLIGHT FOR NTOA TRAINING | 5/19-5/23/25 | NASHVILLE, TN |
| UNITED 0164489397218 | 35.00 | DILLARD, BRANDON | POLICE | GENERAL FUND | LUGGAGE FOR NTOA TRAINING | 5/19-5/23/25 | NASHVILLE, TN |
| UNITED 0164489397219 | 35.00 | DILLARD, BRANDON | POLICE | GENERAL FUND | LUGGAGE FOR NTOA TRAINING | 5/19-5/23/25 | NASHVILLE, TN |
| AP020 - PF O'HARE ONLINE | 176.00 | DILLARD, BRANDON | POLICE | GENERAL FUND | PRE-FLIGHT PARKING FOR NTOA TRAINING | 5/19-5/23/25 | NASHVILLE, TN |
| HOLIDAY INN EXP & SUITES | 306.36 | MURPHY, AARON | POLICE | GENERAL FUND | HOTEL FOR NUCPS VEHICLE DYNAMICS COURSE | 4/14-4/18/25 | LAKE ZURICH, IL |
| MARRIOTT ANAHEIM | 757.89 | FABIANI, KRISTINE | POLICE | GENERAL FUND | HOTEL FOR INTERNATIONAL CIT CONFERENCE | 8/10-8/14/25 | ANAHEIM, CA |
| MARRIOTT ANAHEIM | 757.89 | MACE, BRIAN | POLICE | GENERAL FUND | HOTEL FOR INTERNATIONAL CIT CONFERENCE | 8/10-8/14/25 | ANAHEIM, CA |
| UNITED 0162479528182 | 220.00 | REDD, CARLA | POLICE | GENERAL FUND | FLIGHT FOR IACP MIDYEAR MEETING | 4/24-4/27/25 | GRAPEVINE, TX |
| AMERICAN AIR0012233532037 | 187.97 | LAWLER, JASON | POLICE | GENERAL FUND | FLIGHT FOR NASRO SCHOOL SAFETY CONFERENCE | 7/5-7/13/25 | GRAPEVINE, TX |
| AMERICAN AIR0012233541202 | 187.97 | HEDLUND, JEREMIAH | POLICE | GENERAL FUND | FLIGHT FOR NASRO SCHOOL SAFETY CONFERENCE | 7/5-7/13/25 | GRAPEVINE, TX |
| UNITED 0162479744457 | 21.50 | MACE, BRIAN | POLICE | GENERAL FUND | FLIGHT FARE DIFFERENCE FOR INTERNATIONAL CIT CONFERENCE | 8/10-8/14/25 | ANAHEIM, CA |
| UNITED 0162479744459 | 21.50 | FABIANI, KRISTINE | POLICE | GENERAL FUND | FLIGHT FARE DIFFERENCE FOR INTERNATIONAL CIT CONFERENCE | 8/10-8/14/25 | ANAHEIM, CA |
| UNITED 0162479828629 | 392.05 | REDD, CARLA | POLICE | GENERAL FUND | FLIGHT FOR IACP MIDYEAR MEETING | 4/24-4/27/25 | GRAPEVINE, TX |
| UNITED 0164490661810 | 35.00 | REDD, CARLA | POLICE | GENERAL FUND | LUGGAGE FOR IACP MIDYEAR MEETING | 4/24-4/27/25 | GRAPEVINE, TX |
| AP020 - PF O'HARE ONLINE | 138.25 | MACE, BRIAN | POLICE | GENERAL FUND | PRE-FLIGHT PARKING FOR INTERNATIONAL CIT CONFERENCE | 8/10-8/14/25 | ANAHEIM, CA |
| AP020 - PF O'HARE ONLINE | 126.50 | REDD, CARLA | POLICE | GENERAL FUND | PRE-FLIGHT PARKING FOR IACP MIDYEAR MEETING | 4/24-4/27/25 | GRAPEVINE, TX |
| EB *DRONESENSE CERTIFI | 900.00 | VOYLES, BRUCE | POLICE | GENERAL FUND | REGISTRATION FOR DRONESENSE COURSE | 6/17-6/19/25 | MENTOR, OH |
| AP020 - PF O'HARE ONLINE | 134.50 | SARANTOPOULOS, APOSTOLOS | POLICE | GENERAL FUND | PRE-FLIGHT PARKING FOR CRIMES AGAINST WOMEN CONFERENCE | 5/19-5/22/25 | DALLAS, TX |
| AP020 - PF O'HARE ONLINE | 118.50 | REDD, CARLA | POLICE | GENERAL FUND | PRE-FLIGHT PARKING FOR IACP MIDYEAR MEETING | 4/24-4/27/25 | GRAPEVINE, TX |
| HILTON ADVPURCH8002367113 | 1,047.38 | DODD, RICHARD | POLICE | GENERAL FUND | HOTEL FOR CRIME SCENE RECONSTRUCTION COURSE | 11/17-11/21/25 | VALPARAISO, IN |
| SQ *CANINE TACTICAL OPERA | 1,450.00 | CASE, KEVIN; NEGRI, FRANK | POLICE | GENERAL FUND | REGISTRATION FOR SKIDDS/CATS CLASS 296 | 10/20-10/22/25 | AURORA, IL |
| HOLIDAY INN EXP & SUITES | 306.36 | MURPHY, AARON | POLICE | GENERAL FUND | HOTEL FOR NUCPS VEHICLE DYNAMICS COURSE | 4/21-4/25/25 | LAKE ZURICH, IL |
| GAYLORD TEXAN FRONT DE | 995.76 | REDD, CARLA | POLICE | GENERAL FUND | HOTEL FOR IACP MIDYEAR MEETING | 4/24-4/27/25 | GRAPEVINE, TX |
| WALGREENS #7069 | 332.95 | VARGAS, JONATHAN | POLICE | GENERAL FUND | GAS CARD FOR DRIVE TO POLICE WORKING DOG NATIONAL WORKSHOP | 5/4-5/9/25 | ROCKWALL, TX |
| SAFARILAND TRAINING GR | 995.00 | JACOBI, AUSTIN | POLICE | GENERAL FUND | REGISTRATION FOR SAFARILAND TRAINING | 5/13-5/16/25 | HAMPSHIRE, IL |
| SAFARILAND | 995.00 | WARREN, MATTHEW | POLICE | GENERAL FUND | REGISTRATION FOR SAFARILAND TRAINING | 5/13-5/16/25 | HAMPSHIRE, IL |
| EB *2025 GREEN DRIVES | 81.88 | MITCH LEATHERBY | STREETS | GENERAL FUND | GREEN DRIVES CONFERENCE & EXPO | 05/08/25 | ALSIP, IL |
| IMSA MIDWEST SECTION | 2,000.00 | BEN DAHLMEIER & JUSTIN PIRRIE | TRAFFIC | GENERAL FUND | WORK ZONE TEMP TRAFFIC CONTROL & TRAFFIC SIGNAL LEVEL 1 CLASSES | 3/10/25-3/12/25 | DAVENPORT, IA |
| ILLINOIS AWWA | 500.00 | GREG HOCKMUTH | WATER | WATER | ISAWWA WATERCON 2025 | 4/14/25 - 4/16/25 | PEORIA, IL |
| PEORIA MARRIOTT PERE M | 213.90 | MIKE NORRIS | WATER | WATER | HOTEL ERROR FOR ISAWWA WATERCON 2025 | 4/14/25 - 4/16/25 | PEORIA, IL |
| PEORIA MARRIOTT PERE M | 689.40 | JAMIE ROTT | WATER | WATER | HOTEL FOR ISAWWA WATERCON 2025 | 4/13/25 - 4/16/25 | PEORIA, IL |
| PEORIA MARRIOTT PERE M | 459.60 | MIKE NORRIS | WATER | WATER | HOTEL FOR ISAWWA WATERCON 2025 | 4/14/25 - 4/16/25 | PEORIA, IL |
| FOUR POINTS BY SHERATO | 310.50 | GREG HOCKMUTH | WATER | WATER | HOTEL FOR ISAWWA WATERCON 2025 | 4/14/25 - 4/16/25 | PEORIA, IL |
| COUNTRY INN & SUITES B | 679.55 | HEATH STREETER | WATER | WATER | HOTEL FOR ILLINOIS PUBLIC SERVICE INSTITUTE | 4/27/25 - 5/2/25 | EFFINGHAM, IL |
| TOTAL | 40,911.42 | May-25 | | | | | |

| MERCHANT | AMOUNT | EMPLOYEE | DEPARTMENT | FUND | TRAINING | DATES | LOCATION |
|---------------------------|----------|---|-------------------------------|-------------------------|--|-----------------------|-------------------|
| TRAINHR | 145.00 | GREG HOCKMUTH | WATER | WATER | TRANSITION FROM PEER TO SUPERVISOR-RECORDED WEBINAR | 05/07/25 | ONLINE |
| IAAI | 203.00 | CHRISTOPHER TUMEO | FIRE | GENERAL FUND | EVIDENCE COLLECTION TECHNICIAN | 05/31/25 | ROCKFORD IL |
| SHELL OIL12434631037 | 48.27 | OC,MS,CG,TR | HEALTH & HUMAN SERVICES | HEALTH & HUMAN SERVICES | FUEL FOR 2025 IACAA ANNUAL CONFERENCE | 5/4/25-5/6/25 | SPRINGFIELD IL |
| DOUBLETREE AB LINCOLN | 285.00 | OWEN CARTER | HEALTH & HUMAN SERVICES | HEALTH & HUMAN SERVICES | HOTEL FOR 2025 IACAA ANNUAL CONFERENCE | 5/4/25-5/6/25 | SPRINGFIELD IL |
| AEDSSENTIALS, INC | 215.00 | CHIEF LUIS DURAN | FIRE | GENERAL FUND | AHA CARD CLASS (ACLS/CPR/PALS) REGISTRATION FEE AT AED ESSENTIALS | 7/21/2025 | ROCKFORD, IL |
| DOUBLETREE AB LINCOLN | 285.00 | TEAIRIA ROBINSON | HEALTH & HUMAN SERVICES | HEALTH & HUMAN SERVICES | HOTEL FOR 2025 IACAA ANNUAL CONFERENCE | 5/4/25-5/6/25 | SPRINGFIELD IL |
| DOUBLETREE AB LINCOLN | 285.00 | MARTHA STRAWSER | HEALTH & HUMAN SERVICES | HEALTH & HUMAN SERVICES | HOTEL FOR 2025 IACAA ANNUAL CONFERENCE | 5/4/25-5/6/25 | SPRINGFIELD IL |
| DOUBLETREE AB LINCOLN | 285.00 | CHRISTOPHER GREENWOOD | HEALTH & HUMAN SERVICES | HEALTH & HUMAN SERVICES | HOTEL FPR IACAA ANNUAL CONFERENCE | 5/4/25-5/5/25 | SPRINGFIELD IL |
| COMMUNITY ACTION PARTNER | 2,520.00 | OCARTER, CGREENWOOD,TROBINSON | HEALTH & HUMAN SERVICES | HEALTH & HUMAN SERVICES | 2025 ANNUAL NCAIP | 8/26-8/29/25 | DETROIT MI |
| HOTEL VALLEY HO HOTEL | 975.55 | RUDY MORENO | CONSTR & DEV SERVICES | GENERAL FUND | LODGE INFORMATION FOR AVOLVE INSPIRE TRAINING HOTEL VALLEY HO | 04/28/2025-05/01/2025 | SCOTTSDALE,AZ |
| HOTEL VALLEY HO HOTEL | 325.19 | RUDY MORENO | PLANNING | GENERAL FUND | LODGE INFORMATION FOR AVOLVE INSPIRE TRAINING HOTEL VALLEY HO | 04/28/2025-05/01/2025 | SCOTTSDALE,AZ |
| INT'L CODE COUNCIL INC | 166.28 | MATT CONBOY | CONSTR & DEV SERVICES | GENERAL FUND | 2021 INTERNATIONAL FIRE AND CODE TAB AND BOOK COMBO | 05/06/25 | ROCKFORD,IL |
| PRICEIN*TVL PROTECT | 29.96 | VICTIOR WILDER, JESSICA ANDERSON, JORDAN MOYER | CONSTR & DEV SERVICES | GENERAL FUND | FLIGHT INSURANCE FOR SCEMA TRAINING | 06/11-13/2025 | MEMPHIS, TN |
| PRICEIN*TVL PROTECT | 29.97 | VICTIOR WILDER, JESSICA ANDERSON, JORDAN MOYER | CONSTR & DEV SERVICES | GENERAL FUND | FLIGHT INSURANCE FOR SCEMA TRAINING | 06/11-13/2025 | MEMPHIS, TN |
| UNITED 0162485053272 | 332.97 | VICTOIR WILDER | CONSTR & DEV SERVICES | GENERAL FUND | FLIGHT FOR SCEMA TRAINING | 06/11-13/2025 | MEMPHIS, TN |
| UNITED 0162485053273 | 332.97 | JESSICA ANDERSON | CONSTR & DEV SERVICES | GENERAL FUND | FLIGHT FOR SCEMA TRAINING | 06/11-13/2025 | MEMPHIS, TN |
| UNITED 0162485053274 | 332.97 | JORDAN MOYER | CONSTR & DEV SERVICES | GENERAL FUND | FLIGHT FOR SCEMA TRAINING | 06/11-13/2025 | MEMPHIS, TN |
| SQ *THE WORKS, INC. | 700.00 | VICTIOR WILDER, JESSICA ANDERSON | CONSTR & DEV SERVICES | GENERAL FUND | SCEMA STRATEGIC CODE ENFORCEMENT MANAGMENT ACADEMY REGISTRATION | 06/11-13/2025 | MEMPHIS, TN |
| SQ *THE WORKS, INC. | 350.00 | JORDAN MOYER | CONSTR & DEV SERVICES | GENERAL FUND | SCEMA STRATEGIC CODE ENFORCEMENT MANAGEMENT ACADEMY REGISTRATION | 06/11-13/2025 | MEMPHIS, TN |
| INT'L CODE COUNCIL INC | 240.00 | PATECIA RUSH | CONSTR & DEV SERVICES | GENERAL FUND | M1 RESIDENTIAL MECHANICAL INSPECTOR CODE CYCLE 2021 EXAM | 05/13/2025 | ONLINE |
| HOME BUILDERS ASSOCIATIO | 36.05 | NELSONS SJOTROM | CONSTR & DEV SERVICES | GENERAL FUND | HOME BUILDERS ASSOCIATION MEETING | 05/15/2025 | LOVES PARK, IL |
| INT'L CODE COUNCIL INC | 69.00 | PATECIA RUSH | CONSTR & DEV SERVICES | GENERAL FUND | 2021 COMMERCIAL MECHANICAL INSPECTOR -M2 STUDY GUIDE | 05/16/2025 | ONLINE |
| INT'L CODE COUNCIL INC | 1,401.44 | NELSON SJOSTROM | CONSTR & DEV SERVICES | GENERAL FUND | IMC SPANISH, IBC, IRC, SOLAR ENERGY PROVISIONS & COMMENTARY, TINY HOMES BOOKS AND TABS | 05/21/2025 | ROCKFORD,IL |
| WWW.USACCESSINSTITUTE. | 150.00 | NELSON SJOSTROM | CONSTR & DEV SERVICES | GENERAL FUND | ILLINOIS STATE ACCESSIBLE UNITS AND TYPE A, B AND C UNITS WEBINAR | 06/20/2025 | ONLINE |
| WWW.USACCESSINSTITUTE. | 125.00 | RUDY MORENO | CONSTR & DEV SERVICES | GENERAL FUND | ILLINOIS STATE ACCESSIBLE UNITS AND TYPE A, B AND C UNITS WEBINAR | 06/20/2025 | ONLINE |
| WWW.USACCESSINSTITUTE. | 25.00 | RUDY MORENO | PLANNING | GENERAL FUND | ILLINOIS STATE ACCESSIBLE UNITS AND TYPE A, B AND C UNITS WEBINAR | 06/20/2025 | ONLINE |
| COUNTRY INN & SUITES B | 724.47 | MATT MOORMAN | WATER | WATER | HOTEL FOR ILLINOIS PUBLIC SERVICE INSTITUTE | 4/27/25 - 5/2/25 | EFFINGHAM, IL |
| COUNTRY INN & SUITES B | 724.47 | JAIME GUERRERO JR | WATER | WATER | HOTEL FOR ILLINOIS PUBLIC SERVICE INSTITUTE | 4/27/25 - 5/2/25 | EFFINGHAM, IL |
| ILLINOIS AWWA | 546.00 | KEVIN GUZMAN | WATER | WATER | ISAWWA WATER DISTRIBUTION SYSTEM O&M CLASS C/D | 6/17/25 - 8/19/25 | DOWNERS GROVE, IL |
| ILLINOIS AWWA | 546.00 | GARRETT ALLEY | WATER | WATER | ISAWWA WATER DISTRIBUTION SYSTEM O&M CLASS C/D | 6/17/25 - 8/19/25 | DOWNERS GROVE, IL |
| START EARLY | 25.00 | AMY MORRIS | HEALTH & HUMAN SERVICES | HEALTH & HUMAN SERVICES | BEING PRESENT WITH FAMILIES | MAY 2025 | VIRTUAL |
| DOUBLETREE HOTELS ALSP | 145.77 | MITCH LEATHERBY | STREETS | GENERAL FUND | HOTEL FOR 2025 GREEN DRIVES CONFERENCE & EXPO | 5/7/25 | ALSIP, IL |
| DOUBLETREE HOTELS ALSP | 145.77 | JEFF SPENCE | PROPERTY | PROPERTY | HOTEL FOR 2025 GREEN DRIVES CONFERENCE & EXPO | 5/7/25 | ALSIP, IL |
| ICMA ONLINE | 275.00 | WILHELM | ECONOMIC DEVELOPMENT | GENERAL FUND | ICMA ONLINE | 8/5-8/7/25 | CHICAGO IL |
| THE CAPITAL SUITES HTL | 516.00 | MARTINEZ MANLEY | CD ADMINISTRATION | CD-BLOCK GRANT | HOTEL FOR TRAINING | 4/20/25-4/24/25 | COLUMBUS OH |
| DOUBLETREE AB LINCOLN | 285.00 | ANQUINETTE PARHAM | HEALTH & HUMAN SERVICES | HEALTH & HUMAN SERVICES | HOTEL 2025 IACAA ANNUAL CONFERENCE | 5/4 - 5/6/25 | SPRINGFIELD, IL |
| LOVE'S #0529 OUTSIDE | 49.61 | PARHAM | HEALTH & HUMAN SERVICES | HEALTH & HUMAN SERVICES | FUEL FOR VAN 951 WHILE AT PEORIA MEETING | 5/1/25 | PEORIA, IL |
| RKFD CHAMB* IL | 25.00 | PARHAM | HEALTH & HUMAN SERVICES | HEALTH & HUMAN SERVICES | LITE'S INSIGHTS BREAKFAST BRIEFING - 2025 LEGISLATIVE SESSION | 7/1/2025 | ROCKFORD, IL |
| BUILD, INC. | 240.00 | HERNANDEZ, WALLACE, DILLON, & MINSON | DOMESTIC & COMMUNITY VIOLENCE | FAMILY PEACE CENTER | REGISTRATION FOR RESTORATIVE JUSTICE CONFERENCE | 5/30/25 | CHICAGO, IL |
| SON DANGER ASSESSMENT | 125.00 | ANNA GRZELAK | DOMESTIC & COMMUNITY VIOLENCE | FAMILY PEACE CENTER | DANGER ASSESSMENT TRAINING | 5/13/25 | ONLINE |
| CYPHERWORX INC | 275.00 | TELENA MINSON | DOMESTIC & COMMUNITY VIOLENCE | FAMILY PEACE CENTER | 40-HR. DV TRAINING | 5/13/25 | ONLINE |
| PESI | 59.99 | ANNA GRZELAK | DOMESTIC & COMMUNITY VIOLENCE | FAMILY PEACE CENTER | TRAUMA-INFORMED SUPERVISION TRAINING | 5/30/25 | ONLINE |
| COACH USA INC | 26.73 | MARY TRUJILLO | MAYOR'S OFFICE | GENERAL FUND | BUS TO AIRPORT FOR TRAVEL TO NAT'L CO-RESPONDER CONERENCE | 5/31/25 - 6/04/25 | ATLANTA, GA |
| COACH USA INC | 26.72 | MARY TRUJILLO | MAYOR'S OFFICE | GENERAL FUND | BUS TO AIRPORT FOR TRAVEL TO NAT'L CO-RESPONDER CONERENCE | 5/31/25 - 6/04/25 | ATLANTA, GA |
| HILTON ATLANTA CERTIFI | 274.66 | MARY TRUJILLO | MAYOR'S OFFICE | GENERAL FUND | HOTEL FOR NATIONAL CO-RESPONDER CONFERENCE | 5/31/25 - 6/04/25 | ATLANTA, GA |
| HILTON ATLANTA CERTIFI | 596.37 | MARY TRUJILLO | MAYOR'S OFFICE | GENERAL FUND | HOTEL FOR NATIONAL CO-RESPONDER CONFERENCE | 5/31/25 - 6/04/25 | ATLANTA, GA |
| EB *ONLINE PREVENTING | 658.10 | AVERY DILLON | DOMESTIC & COMMUNITY VIOLENCE | FAMILY PEACE CENTER | MY LIFE MY CHOICE DV TRAINING | 5/29/25 | ONLINE |
| IL TOLLWAY-AUTOREPLENISH | 10.00 | ENGINEERING TEAM | CIP | CIP | IPASS REPLENISHMENT | 5/8/25 | ROCKFORD, IL |
| IL TOLLWAY-AUTOREPLENISH | 10.00 | ENGINEERING TEAM | CIP | CIP | IPASS REPLENISHMENT | 5/19/25 | ROCKFORD, IL |
| CROWNE PLAZA SPRINGFIELD | 125.40 | GENKINGER, ANDREA | POLICE | GENERAL FUND | HOTEL FOR ILLINOIS LAW ENFORCEMENT MEMORIAL CEREMONY | 4/30-5/1/25 | SPRINGFIELD, IL |
| CROWNE PLAZA SPRINGFIELD | 125.40 | TOEPFER, SHAWN | POLICE | GENERAL FUND | HOTEL FOR ILLINOIS LAW ENFORCEMENT MEMORIAL CEREMONY | 4/30-5/1/25 | SPRINGFIELD, IL |
| CROWNE PLAZA SPRINGFIELD | 125.40 | ROHER,TIMOTHY | POLICE | GENERAL FUND | HOTEL FOR ILLINOIS LAW ENFORCEMENT MEMORIAL CEREMONY | 4/30-5/1/25 | SPRINGFIELD, IL |
| CROWNE PLAZA SPRINGFIELD | 125.40 | WATTON, DANIEL | POLICE | GENERAL FUND | HOTEL FOR ILLINOIS LAW ENFORCEMENT MEMORIAL CEREMONY | 4/30-5/1/25 | SPRINGFIELD, IL |
| CROWNE PLAZA SPRINGFIELD | 125.40 | ALEXANDER, JHORDYNNE | POLICE | GENERAL FUND | HOTEL FOR ILLINOIS LAW ENFORCEMENT MEMORIAL CEREMONY | 4/30-5/1/25 | SPRINGFIELD, IL |
| CROWNE PLAZA SPRINGFIELD | 125.40 | KIELY, GARY | POLICE | GENERAL FUND | HOTEL FOR ILLINOIS LAW ENFORCEMENT MEMORIAL CEREMONY | 4/30-5/1/25 | SPRINGFIELD, IL |
| CROWNE PLAZA SPRINGFIELD | 125.40 | TOEPFER, SHAWN | POLICE | GENERAL FUND | HOTEL FOR ILLINOIS LAW ENFORCEMENT MEMORIAL CEREMONY | 4/30-5/1/25 | SPRINGFIELD, IL |
| CROWNE PLAZA SPRINGFIELD | 125.40 | MARQUEZ, EMILIO | POLICE | GENERAL FUND | HOTEL FOR ILLINOIS LAW ENFORCEMENT MEMORIAL CEREMONY | 4/30-5/1/25 | SPRINGFIELD, IL |
| HOLIDAY INN EXP & SUITES | 306.36 | MURPHY, AARON | POLICE | GENERAL FUND | HOTEL FOR NUCPS VEHICLE DYNAMICS COURSE | 4/28-5/2/25 | LAKE ZURICH, IL |
| NATIONAL GANG CRIME RESEA | 1,950.00 | K. WATSON, H. WESSNER, M. FITZGERALD | POLICE | GENERAL FUND | REGISTRATION FOR 2025 GANG TRAINING CONFERENCE | 8/4-8/6/25 | CHICAGO, IL |
| GDP**UNDERWORLD LLC | 225.00 | MARKO, RYAN | POLICE | GENERAL FUND | REGISTRATION FOR AUTO THEFT & VEHICLE CRIMES TRAINING | 6/30/2025 | HINSDALE, IL |
| FBI LEEDA INC | 795.00 | MCCLAIN, ERIC | POLICE | GENERAL FUND | REGISTRATION FOR FBI-LEEDA | 6/2-6/6/25 | ROSEMONT, IL |
| WWW.CCROC.ORG | 110.00 | KEEN, CHARLES | POLICE | GENERAL FUND | REGISTRATION FOR CCROC CONFERENCE | 8/12-8/13/25 | GLEN ELLYN, IL |
| SQ *MINNESOTA LAW ENFORCE | 2,800.00 | ALEXANDER, J.; MILNE, N.; WOLF, B.; WOODS, S. | POLICE | GENERAL FUND | REGISTRATION FOR HONOR GUARD CAMP | 9/14-9/18/25 | LITTLE FALLS, MN |
| SQ *NATIONAL TACTICAL OFF | 4,285.00 | GEASCHEL, A; DELACY, M; HEFRIG, J; MARTENSEN, M; RHEIN, M | POLICE | GENERAL FUND | REGISTRATION FOR NTOA TRAINING | 7/21-7/25/25 | WATERLOO, IA |
| DOUBLETREE HOTELS | 259.90 | CERASA, DAVID | POLICE | GENERAL FUND | HOTEL FOR MIDWEST GANG INVESTIGATORS CONFERENCE | 5/5-5/7/25 | LANSING, MI |
| DOUBLETREE HOTELS | 449.85 | WALKER, NOLAN | POLICE | GENERAL FUND | HOTEL FOR MIDWEST GANG INVESTIGATORS CONFERENCE | 5/4-5/7/25 | LANSING, MI |
| DOUBLETREE HOTELS | 389.85 | BOONE, D'EYVON | POLICE | GENERAL FUND | HOTEL FOR MIDWEST GANG INVESTIGATORS CONFERENCE | 5/4-5/7/25 | LANSING, MI |
| NATIONAL INFORMATION O | 650.00 | MARCOMB, MICHELLE | POLICE | GENERAL FUND | REGISTRATION FOR NIOA ANNUAL CONFERENCE | 8/24-8/27/25 | CLEARWATER, FL |
| NU CPS REGISTRATION | 1,095.00 | LANE, RYAN | POLICE | GENERAL FUND | REGISTRATION FOR NUCPS PEDESTRIAN/BICYCLE CRASH RECONSTRUCTION COURSE | 6/9-6/13/25 | BUFFALO GROVE, IL |
| ISLE WATERLOO HOTEL | 84.73 | GEASCHEL, ARMIN | POLICE | GENERAL FUND | HOTEL DEPOSIT FOR NTOA TRAINING | 7/20-7/25/25 | WATERLOO, IA |
| ISLE WATERLOO HOTEL | 84.73 | DELACY, MARK | POLICE | GENERAL FUND | HOTEL DEPOSIT FOR NTOA TRAINING | 7/20-7/25/25 | WATERLOO, IA |
| ISLE WATERLOO HOTEL | 84.73 | HEFRIG, JONATHAN | POLICE | GENERAL FUND | HOTEL DEPOSIT FOR NTOA TRAINING | 7/20-7/25/25 | WATERLOO, IA |
| ISLE WATERLOO HOTEL | 84.73 | MARTENSEN, QUINN | POLICE | GENERAL FUND | HOTEL DEPOSIT FOR NTOA TRAINING | 7/20-7/25/25 | WATERLOO, IA |
| ISLE WATERLOO HOTEL | 84.73 | RHEIN, MICHAEL | POLICE | GENERAL FUND | HOTEL DEPOSIT FOR NTOA TRAINING | 7/20-7/25/25 | WATERLOO, IA |
| FBI LEEDA INC | 795.00 | MISIASZEK, MARIUSZ | POLICE | GENERAL FUND | REGISTRATION FOR FBI-LEEDA | 6/2-6/6/25 | ROSEMONT, IL |
| HOLIDAY INN EXP & SUITES | 306.36 | MURPHY, AARON | POLICE | GENERAL FUND | HOTEL FOR NUCPS TRAFFIC CRASH RECONSTRUCTION 2 COURSE | 5/5-5/9/25 | LAKE ZURICH, IL |
| UNITED 0164481360321 | (45.00) | WOODS, SHERRELL | POLICE | GENERAL FUND | REFUND OF LUGGAGE FOR NATIONAL LAW ENFORCEMENT MEMORIAL EVENTS | 5/10-5/15/25 | WASHINGTON, DC |
| HOLIDAY INN CAPITOL | 1,600.10 | WOODS, SHERRELL; HORMIG, KELLY | POLICE | GENERAL FUND | HOTEL FOR NATIONAL LAW ENFORCEMENT MEMORIAL EVENTS | 5/10-5/15/25 | WASHINGTON, DC |
| HOLIDAY INN CAPITOL | 1,600.10 | SQUIRES, BRIAN; KIELY, GARY | POLICE | GENERAL FUND | HOTEL FOR NATIONAL LAW ENFORCEMENT MEMORIAL EVENTS | 5/10-5/15/25 | WASHINGTON, DC |
| HOLIDAY INN CAPITOL | 1,600.10 | VARGAS, JONATHAN | POLICE | GENERAL FUND | HOTEL FOR NATIONAL LAW ENFORCEMENT MEMORIAL EVENTS | 5/10-5/15/25 | WASHINGTON, DC |
| HOLIDAY INN CAPITOL | 1,600.10 | WATTON, DANIEL | POLICE | GENERAL FUND | HOTEL FOR NATIONAL LAW ENFORCEMENT MEMORIAL EVENTS | 5/10-5/15/25 | WASHINGTON, DC |
| UNITED 0164495730864 | 35.00 | WOODS, SHERRELL | POLICE | GENERAL FUND | LUGGAGE FOR NATIONAL LAW ENFORCEMENT MEMORIAL EVENTS | 5/10-5/15/25 | WASHINGTON, DC |
| UNITED 0164495730865 | 45.00 | WOODS, SHERRELL | POLICE | GENERAL FUND | LUGGAGE FOR NATIONAL LAW ENFORCEMENT MEMORIAL EVENTS | 5/10-5/15/25 | WASHINGTON, DC |
| AMERICAN AIR0012240033911 | 531.00 | SARANTOPOULOS, APOSTOLOS | POLICE | GENERAL FUND | FLIGHT FOR CRIMES AGAINST WOMEN CONFERENCE | 5/19-5/22/25 | DALLAS, TX |
| FBI NATIONAL ACADEMY | 425.00 | DOBRAN, ANDREW | POLICE | GENERAL FUND | REGISTRATION FOR FBI NATIONAL ACADEMY TRAINING | 9/30-10/2/25 | TROY, MI |

| MERCHANT | AMOUNT | EMPLOYEE | DEPARTMENT | FUND | TRAINING | DATES | LOCATION |
|---------------------------|-----------|----------------------------|-------------------------|-------------------------|--|-----------------|------------------|
| HAMPTON INNS | 572.76 | KING, EDWARD | POLICE | GENERAL FUND | HOTEL FOR FBI-LEEDA | 5/12-5/16/25 | MUNDELEIN, IL |
| AMERICAN AIR0012242182629 | 235.66 | MARCOMB, MICHELLE | POLICE | GENERAL FUND | FLIGHT FOR NIOA ANNUAL CONFERENCE | 8/23-8/27/25 | CLEARWATER, FL |
| WWW.CCROC.ORG | 110.00 | KEEN, CHARLES | POLICE | GENERAL FUND | REGISTRATION FOR CCROC CONFERNECE | 8/12-8/13/25 | GLEN ELLYN, IL |
| WWW.CCROC.ORG | 110.00 | SEMENCHUK, ERIK | POLICE | GENERAL FUND | REGISTRATION FOR CCROC CONFERNECE | 8/12-8/13/25 | GLEN ELLYN, IL |
| WWW.CCROC.ORG | 110.00 | BRADBURY, BRANDON | POLICE | GENERAL FUND | REGISTRATION FOR CCROC CONFERNECE | 8/12-8/13/25 | GLEN ELLYN, IL |
| RESIDENCE INN DALLAS D | 1,009.64 | SARANTOPOULOS, APOSTOLOS | POLICE | GENERAL FUND | HOTEL FOR CRIMES AGAINST WOMEN CONFERENCE | 5/18-5/22/25 | DALLAS, TX |
| SHERATON MUSIC CITY | 1,408.98 | DILLARD, BRANDON | POLICE | GENERAL FUND | HOTEL FOR NTOA TRAINING | 5/18-5/24/25 | NASHVILLE, TN |
| FBI LEEDA INC | 795.00 | KELLY, VINCENT | POLICE | GENERAL FUND | REGISTRATION FOR FBI-LEEDA | 6/2-6/6/25 | WAUKESHA, WI |
| AMERICAN AIR0012244468504 | 225.96 | MARCOMB, MICHELLE | POLICE | GENERAL FUND | FLIGHT FOR NIOA ANNUAL CONFERENCE | 8/23-8/28/25 | CLEARWATER, FL |
| FBI LEEDA INC | 795.00 | LANGE, MICHAEL | POLICE | GENERAL FUND | REGISTRATION FOR FBI-LEEDA | 6/23-6/26/25 | ORLAND PARK, IL |
| APO20 - PF O'HARE ONLINE | 160.50 | MARCOMB, MICHELLE | POLICE | GENERAL FUND | PRE-FLIGHT PARKING FOR NIOA ANNUAL CONFERENCE | 8/23-8/28/25 | CLEARWATER, FL |
| APO20 - PF O'HARE ONLINE | 90.75 | REFFETT, ROBERT | POLICE | GENERAL FUND | PRE-FLIGHT PARKING FOR AXON SUMMIT | 6/3-6/5/25 | PHOENIX, AZ |
| DOUBLETREE AB LINCOLN | 294.12 | ANNA GARRISON | ECONOMIC DEVELOPMENT | GENERAL FUND | ITIA/IEZA CONFERENCE HOTEL | 5/8/25-5/9/25 | SPRINGFIELD, IL |
| ILLINOIS ECONOMIC DEVELOP | 378.00 | ANNA GARRISON & SARAH LEYS | ECONOMIC DEVELOPMENT | GENERAL FUND | IEDA CONFERENCE REGISTRATION | 6/11/25-6/12/25 | PEORIA, IL |
| HAMPTON INNS | 748.16 | ROBERT SEARLS | FIRE | GENERAL FUND | HAZARDOUS TECH | 4/27/25-5/2/25 | BEDFORD PARK, IL |
| TOWNEPLACE MARRIOTT | 589.28 | ETHAN FLYNN | FIRE | GENERAL FUND | TRENCH RESCUE AWARENESS & OPS | 5/4/25-5/8/25 | WILMINGTON, IL |
| ALOFT SOUTH BEND | 632.50 | STEPHEN SHOEVLIN | FIRE | GENERAL FUND | INDIANA RIVER RESCUE SCHOOL | 5/18/25-5/23/25 | SOUTH BEND, IN |
| ALOFT SOUTH BEND | 757.50 | MICHAEL MCCracken | FIRE | GENERAL FUND | INDIANA RIVER RESCUE SCHOOL | 5/18/25-5/23/25 | SOUTH BEND, IN |
| ALOFT SOUTH BEND | 632.50 | SCOTT DUBAY | FIRE | GENERAL FUND | INDIANA RIVER RESCUE SCHOOL | 5/18/25-5/23/25 | SOUTH BEND, IN |
| ALOFT SOUTH BEND | 632.50 | BRETT SMITH | FIRE | GENERAL FUND | INDIANA RIVER RESCUE SCHOOL | 5/18/25-5/23/25 | SOUTH BEND, IN |
| SQ *BWI AIRPORT TAXI 330. | 35.15 | A.WALKER, S.KOPP | HEALTH & HUMAN SERVICES | HEALTH & HUMAN SERVICES | TAXI FOR 2025 NATIONAL HEALTHCARE FOR THE HOMELESS CONF | 5/12-5/14/25 | BALTIMORE MD |
| LOT X CAR RENTAL | 90.00 | A.WALKER, S.KOPP | HEALTH & HUMAN SERVICES | HEALTH & HUMAN SERVICES | PARKING FOR 2025 NATIONAL HEALTHCARE FOR THE HOMELESS CONF | 5/12-5/14/25 | BALTIMORE MD |
| MARRIOTT WATERFRONT | 561.66 | A.WALKER, S.KOPP | HEALTH & HUMAN SERVICES | HEALTH & HUMAN SERVICES | HOTEL FOR 2025 NATIONAL HEALTHCARE FOR THE HOMELESS CONF | 5/12-5/14/25 | BALTIMORE MD |
| UBER *TRIP | 30.95 | A.WALKER, S.KOPP | HEALTH & HUMAN SERVICES | HEALTH & HUMAN SERVICES | UBER FOR 2025 NATIONAL HEALTHCARE FOR THE HOMELESS CONF | 5/12-5/14/25 | BALTIMORE MD |
| TOTAL | 50,446.42 | | May-25 | | | | |

August 2025 PURCHASES, \$10,000 - \$25,000

| Purchase Order | Fiscal Year | Total Ordered | Total Liquidated | Name | City | State | Zip Code | Notes |
|-----------------------|--------------------|----------------------|-------------------------|---|-------------|--------------|-----------------|-----------------------|
| 25110396 | 2025 | 20,000.00 | 20,000.00 | ST AMBROGIO SOCIETY | ROCKFORD | IL | 61102 | Per Agreement |
| 25110398 | 2025 | 21,940.00 | 21,940.00 | INSTINCTS AT WORK INC | GUELPH | ON | N1E 0P2 | Professional Services |
| 25170162 | 2025 | 24,999.00 | 24,999.00 | OPPORTUNITY MODELING PARTNERS LLC | CHICAGO | IL | 60613 | Professional Services |
| 25170164 | 2025 | 17,583.65 | 17,583.65 | ROCKFORD PARK DISTRICT | ROCKFORD | IL | 61101 | Per Agreement |
| 25170166 | 2025 | 10,203.79 | 10,203.79 | ROCK VALLEY COLLEGE | ROCKFORD | IL | 61114-5640 | Per Agreement |
| 25170167 | 2025 | 14,552.14 | 14,552.14 | WINNEBAGO COUNTY FINANCE DEPT | ROCKFORD | IL | 61101 | Per Agreement |
| 25210401 | 2025 | 11,171.67 | 11,171.67 | INDUSTRIAL ORGANIZATIONAL SOLUTIONS INC | OAK BROOK | IL | 60523 | Professional Services |
| 25229292 | 2025 | 20,943.00 | 20,943.00 | AED ESSENTIALS | ROCKFORD | IL | 61108 | Per Contract |
| 25229308 | 2025 | 11,865.00 | 11,865.00 | CORPORATE RENAISSANCE GROUP | OTTAWA | ON | K2E 8A9 | Membership Dues |
| 25301138 | 2025 | 13,640.30 | 0.00 | WESCO DISTRIBUTION INC | PITTSBURGH | PA | 15219 | Sole Source |
| 25301146 | 2025 | 24,900.00 | 0.00 | STRAND ASSOCIATES INC | MADISON | WI | 53715 | Professional Services |
| 25305125 | 2025 | 13,000.00 | 13,000.00 | NICOLAS ROCHA | ROCKFORD | IL | 61109 | Per Agreement |
| 25305128 | 2025 | 23,394.40 | 0.00 | STENSTROM EXCAVATION AND | ROCKFORD | IL | 61125-0946 | Emergency Repair |
| 25450141 | 2025 | 12,660.00 | 12,660.00 | CLEARTRACK HR LLC | HUNTSVILLE | AL | 35806 | Professional Services |
| | | 240,852.95 | | | | | | |