



Finance Department  
Central Services Division

**ADDENDUM TO BID  
WELL 39 WATER TREATMENT FACILITY  
BID NO. 321-W-015**

**ADDENDUM NO.: 4**

5/7/2021

To: All Bidders:

Please make the following changes to the above mentioned bid package.

- 1) REFER TO FEHR GRAHAM ADDENDUM NO. 4, HERETO ATTACHED.
- 2) Please be advised that the bid opening date for BID NO.: 321-W-015, WELL 39 – WATER TREATMENT FACILITY has been rescheduled.

**Rescheduled bid opening date: MAY 14, 2021, 11:00 AM**

**Original bid opening date: May 10, 2021, 11:00 AM**

All other portions remained unchanged.

**A copy of this addendum or a reference thereto must be included with your bid or the bid will not be read or considered.**

If you have any questions please contact the Central Services Division at 779-348-7164.

ADDENDUM NO. 4

TO THE CONTRACT DOCUMENTS AND SPECIFICATIONS FOR

City of Rockford  
Well 39 - Water Treatment Facility  
Bid No. 321-W-0154

**Bid Date: May 14, 2021 at 11:00am**

**CLARIFICATIONS**

1. Sheet 11 of 60 of the project drawings - The “Danger” sign on Sheet 11 (referenced in Addendum 2) does not need to be reflective.
2. A limit switch and electric door strike shall be provided for each exterior door as identified in the specifications and the electrical drawings.
3. The adjacent Rock Valley Parcel at 3350 Bell School Road can be utilized for additional construction staging area in accordance with the attached exhibit limits. Should the Contractor elect to utilize this additional area outside of the City-owned property limits, the Contractor will be responsible for installing a temporary 6’ chain link fence between the parking lot area and the construction site limits to protect Rock Valley College students and faculty from the construction site. In addition, any damage caused as a result of the contractor’s use of the Rock Valley College property will be the responsibility of the Contractor to accommodate. Restoration of grass areas at the end of construction will be required.
4. Typical HMA Paving Section on Sheet 11 shall be utilized for Spring Brook roadway patching. HMA Driveway Pavement Section detail shall be used for the driveway and parking area east of the proposed concrete sidewalk within the right of way.
5. Means and methods for shoring related to construction of backwash tank will remain the responsibility of the contractor to select. It is anticipated that sheet piling may be an adequate consideration in order to keep excavation limits within the property limits.

**SPECIFICATIONS**

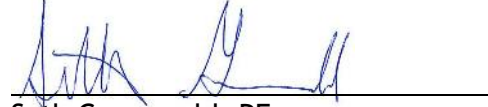
1. **Section 46 61 21 - Horizontal Pressure Filter System**
  - a. Add the following paragraph to 2.02.A.  
  
“10. The filter underdrain area shall be painted.”
  - b. Page 816 of 824 - Replace this page in its entirety with the revised page included with this addendum.

## **DRAWINGS**

1. Sheet 29 of the bid set was revised and is included in this addendum.

This Addendum consists of five (5) pages.

This Addendum No. has been prepared by:

A handwritten signature in blue ink, appearing to read 'Seth Gronewold', is written over a horizontal line.

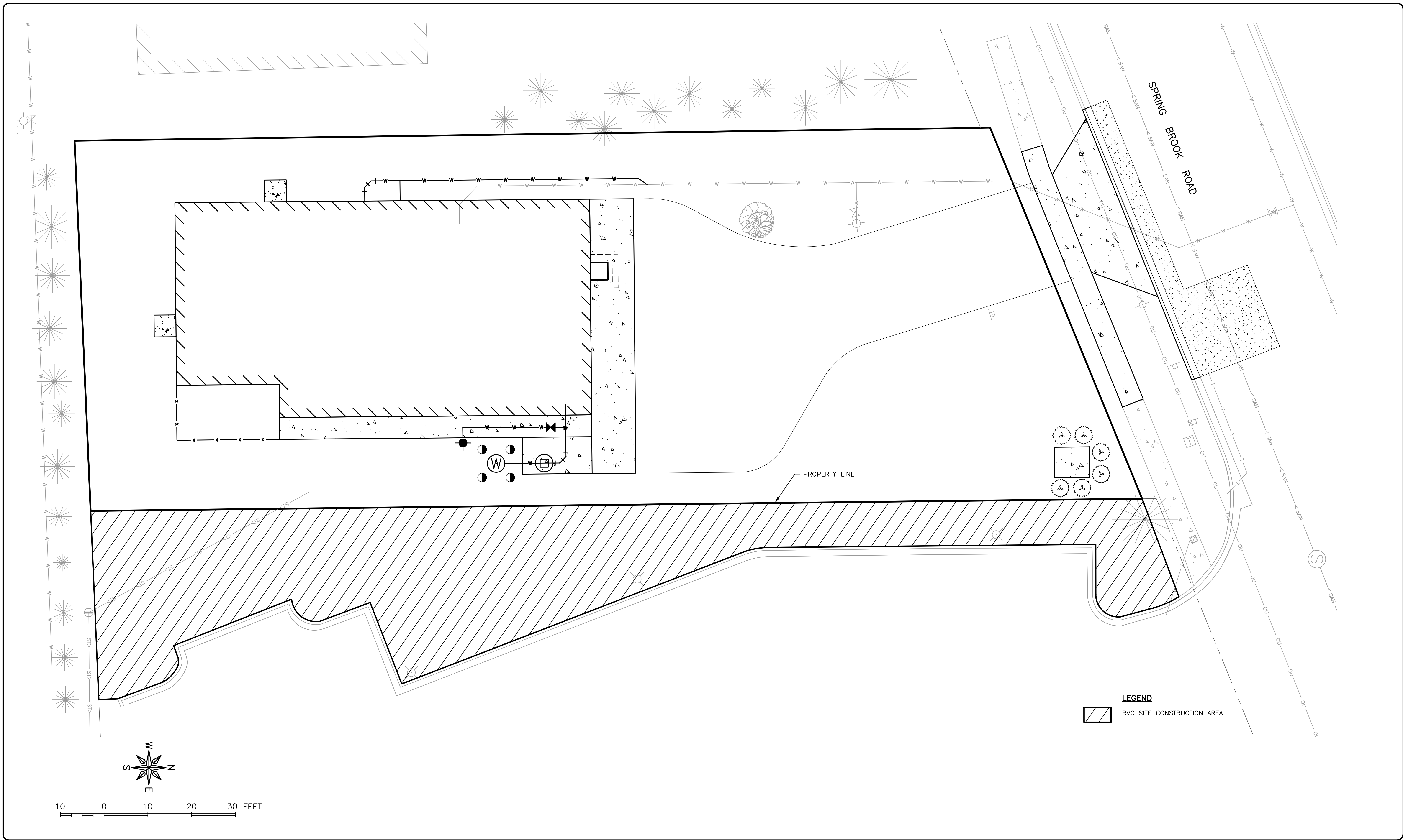
Seth Gronewold, PE  
Project Manager

**END OF ADDENDUM NO. 4**

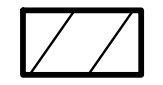
O:\Rockford, City of\19-810 - Well 39 Water Treatment Facility Addition\PA Final\PH04 - Bidding\Addendum 4\19-810 - Addendum 4.docx

external to the air compression chamber and shall all be serviceable for extended compressor life. Bearing maintenance shall not be required until 10,000 run hours. Compressors with bearings that are not accessible for service have a limited life span and shall not be accepted. Compressors shall have an integral radial flow fan for cooling and shall not require any additional electric cooling fans. Each compressor pump shall be provided with an electric drive motor, discharge check valve, an air-cooled after-cooler, and a high discharge temperature shut down switch.

3. Each compressor shall be belt driven by a TEFC, IP 55 class F motor, or equal, for heavy duty operation. The three phase motors are EISA compliant and premium efficient.
4. The system shall include an Electro Pneumatic Control, or equal, which automatically starts/stops the unit when the required working pressure is reached.
5. The compressor scope shall include a compressed air filter, minimum 85 cfm and 235 psig rated and followed by a non-cycling, direct expansion type refrigerated air dryer. The dryer shall use an R-134A refrigerant and shall be equipped with a timed electric condensate drain. The refrigerated dryer shall be powered through the compressor controls and not through a separate power source.
6. The air dryer shall be followed by a second compressed air filter rated to 10 microns.
7. Scope shall include startup by manufacturer certified technician when required on-site.
8. Compressor Control Panel:
  - a. Electrical: 460V, three phase, 14.7 FLA, 25 amp main circuit breaker.
  - b. Provide a NEMA 4 steel compressor control panel with all necessary control equipment required to start and stop the compressor based on air receiver pressure. Equipment in the control panel shall include, but not be limited to, the following:
    - 1) Circuit breaker combination starter for each compressor (NEMA rated).
  - c. Provide the following on the front of the control panel for operator interface:
    - 1) H-O-A selector switch for compressor motor.
    - 2) Green "running" and red "failed" push-to-test style indicating lights for compressor.
    - 3) Elapsed time meter for compressor.
    - 4) Main power disconnect.
  - d. Provide the following "dry" contacts to terminal blocks in the control panel for remote use:
    - 1) Air receiver low pressure.
    - 2) Air Compressor fail.



**LEGEND**

 RVC SITE CONSTRUCTION AREA

**FEHR GRAHAM**  
ENGINEERING & ENVIRONMENTAL  
ILLINOIS DESIGN FIRM NO. 184-003525

ILLINOIS  
IOWA  
WISCONSIN

OWNER/DEVELOPER:  
CITY OF ROCKFORD  
425 EAST STATE STREET  
ROCKFORD, IL 61104

PROJECT AND LOCATION:  
WELL NO. 39 WATER  
TREATMENT FACILITY  
ROCKFORD, ILLINOIS

DRAWN BY: YJ  
APPROVED BY: JWM  
DATE: 05/06/21  
SCALE: AS NOTED

REVISIONS		
REV. NO.	DESCRIPTION	DATE

DRAWING:  
RVC SITE CONSTRUCTION AREA

SET TYPE:  
G:\30\19-810\19-810 - Design.dwg, EXH

JOB NUMBER:  
19-810

SHEET NUMBER:  
1 of 1

ROOM FINISH SCHEDULE									
ROOM NAME	FLOOR	N. WALL	E. WALL	S. WALL	W. WALL	CEILING		NOTES	
						TYPE	HGT.		
106	EQUIPMENT ROOM	F1	W2	W2	W2	W2	C1	15'-4"	
100	FILTER ROOM	F1	W1	W1	W1	W1	C1	15'-4"	
101	HMO ROOM	F1/F2	W1	W1	W1	W1	C1	15'-4"	1
102	CHLORINE ROOM	F1	W1	W1	W1	W1	C1	15'-4"	
103	POLYPHOSPHATE ROOM	F1/F2	W1	W1	W1	W1	C1	15'-4"	
104	FLUORIDE ROOM	F2	W1	W1	W1	W1	C1	15'-4"	
105	ELECTRICAL ROOM	F1	W1	W1	W1	W1	C1	15'-4"	
107	GENERATOR ROOM	F1	W2	W2	W2	W2	C1	15'-4"	
	BACKWASH TANK	F2	W3	W3	W3	W3	C2	14'-0"	

LEGEND:					
FLOOR		WALL		CEILING	
CODE	DESCRIPTION	CODE	DESCRIPTION	CODE	DESCRIPTION
F1	CLEAR EPOXY COATED CONCRETE W/ANTI-SKID SAND	W1	PAINT CONCRETE BLOCK	C1	PAINT PRECAST CONCRETE PLANK
F2	CHEMICAL RESISTANT COATING	W2	PAINT CONCRETE SOUND ABSORPTIVE BLOCK	C2	CHEMICAL RESISTANT COATING
		W3	CHEMICAL RESISTANT COATING		

NOTES:  
1. PROVIDE CHEMICAL RESISTANT COATING TO NEW FLOOR AND NEW WALL/SLAB FACES OF CHEMICAL CONTAINMENT PIT.

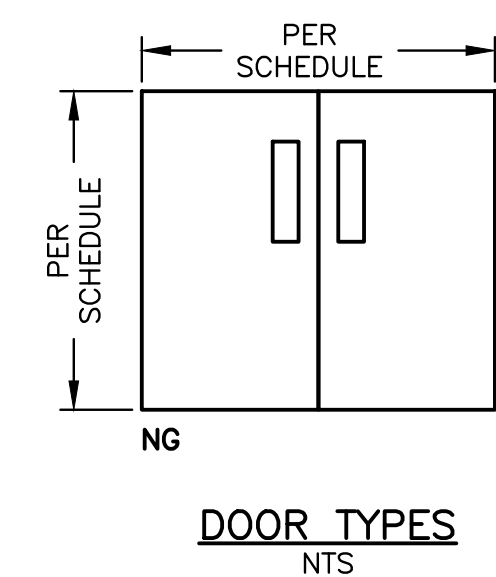
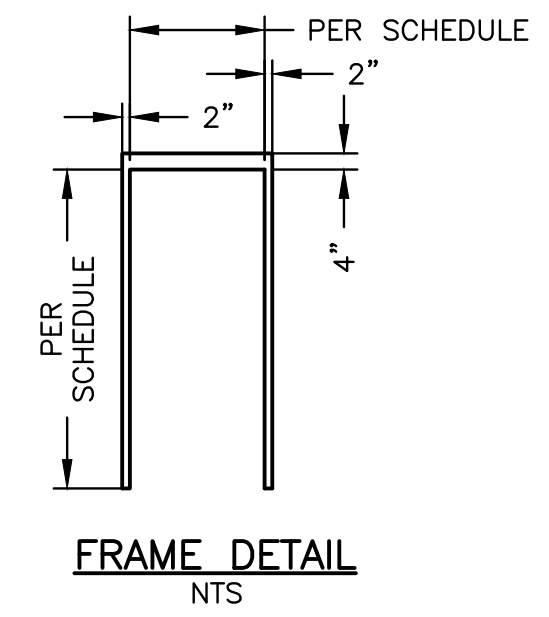
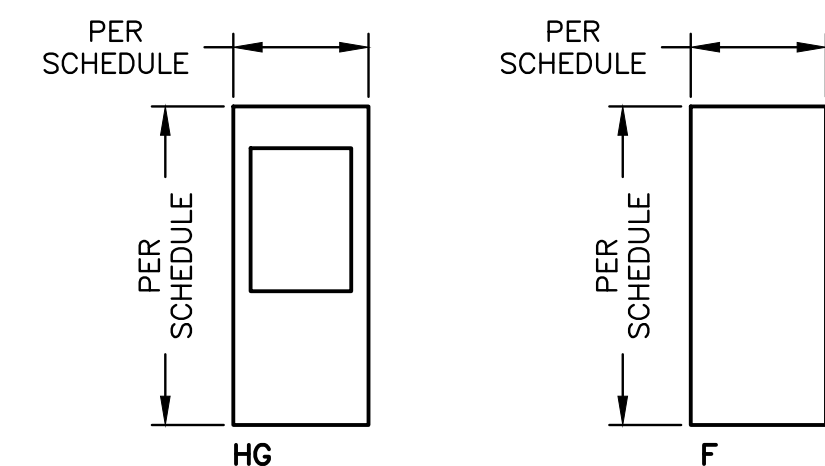
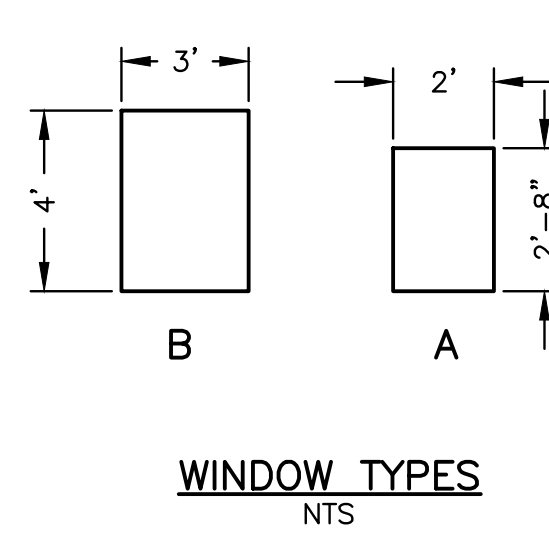
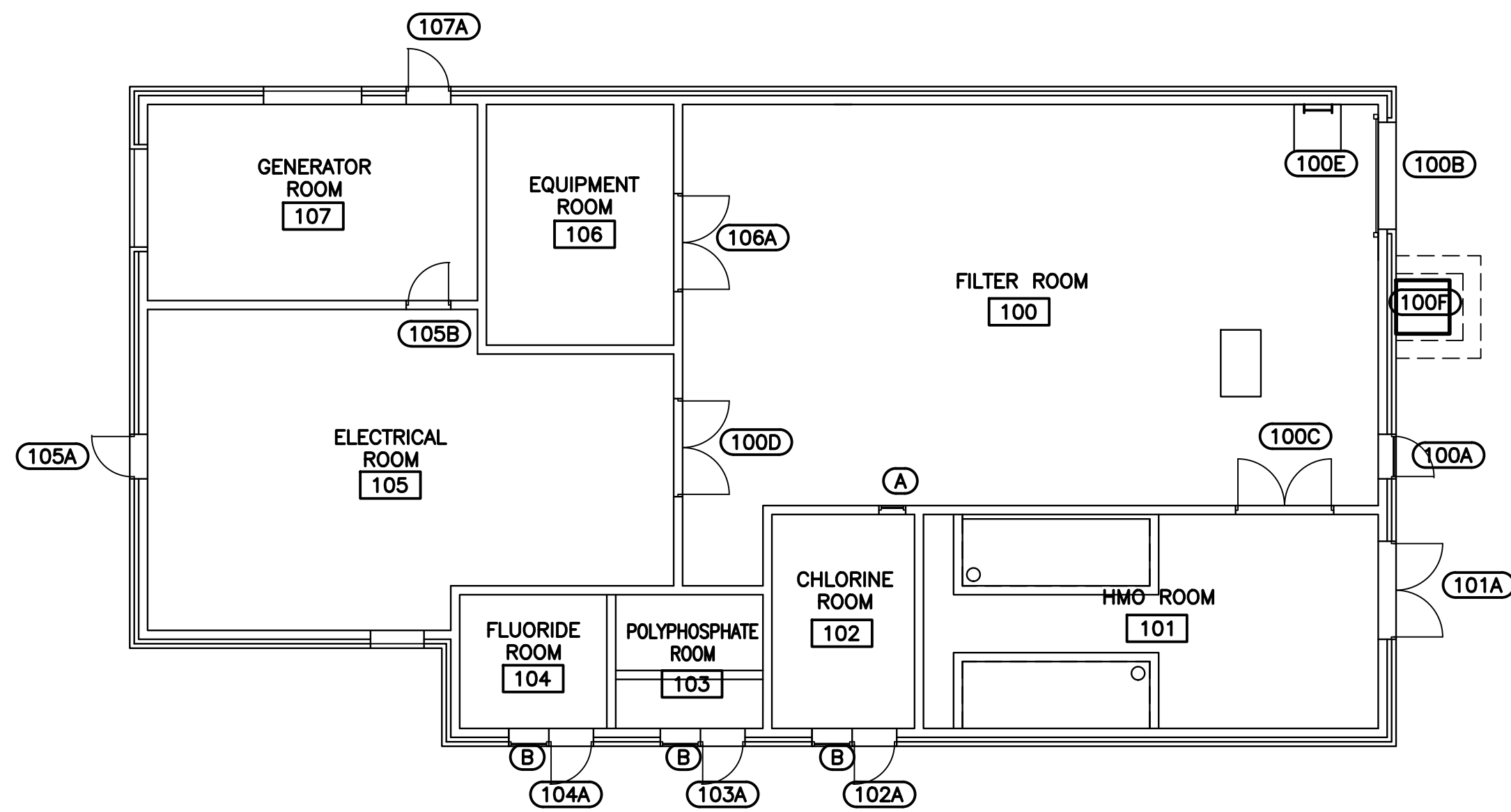
WINDOW SCHEDULE					
ROOM	MARK	STYLE	MATERIAL	SIZE	TYPE
CHLORINE	A	8225TL	STL	24" X 32"	FIXED
CHLORINE	B	8225TL	STL	36" X 48"	FIXED
FLUORIDE	B	8225TL	STL	36" X 48"	FIXED
POLYPHOSPHATE	B	8225TL	STL	36" X 48"	FIXED

GENERAL NOTE:  
NEW FENESTRATION WILL COMPLY WITH THE PROVISIONS OF SECTION C402 OF THE 2018 INTERNATIONAL ENERGY CONSERVATION CODE AND PER SPECIFICATIONS SECTION 08 80 00

DOOR SCHEDULE											
ROOM	DOOR							FRAME	HARDWARE GROUP		NOTES
	DOOR NUMBER	SIZE	MATERIAL	TYPE		SWING		MATERIAL	ACTIVE	INACTIVE	
				ACTIVE	INACTIVE	ACTIVE	INACTIVE				
FILTER	100A	3'-4" X 7'-0"	STL	HG	-	RHR	-	STL	3	-	1,3
FILTER	100B	8'-0" X 9'-2"	STL	OD	-	-	-	STL	-	-	1,3
FILTER	100C	7'-0" X 7'-0"	STL	HG	HG	RH	LH	STL	1	2	1,3
FILTER	100D	7'-0" X 7'-0"	STL	HG	HG	RH	LH	STL	1	2	1,3
FILTER	100E	3'-6" X 3'-6"	AL	FD	-	-	-	AL	-	-	2
FILTER	100F	4'-0" X 4'-0"	AL	FD	-	-	-	AL	-	-	4
HMO	101A	7'-0" X 7'-0"	STL	NG	NG	RHR	LHR	STL	3	4	1,3
CHLORINE	102A	3'-4" X 7'-0"	STL	F	-	RHR	-	STL	3	-	1,3
PHOLYPHOSPHATE	103A	3'-4" X 7'-0"	STL	F	-	RHR	-	STL	3	-	1,3
FLUORIDE	104A	3'-4" X 7'-0"	STL	F	-	RHR	-	STL	3	-	1,3
ELECTRICAL	105A	3'-4" X 7'-0"	STL	F	-	RHR	-	STL	3	-	1,3
ELECTRICAL	105B	3'-4" X 7'-0"	STL	HG	-	RHR	-	STL	1	-	1,3
EQUIPMENT	106A	7'-0" X 7'-0"	STL	HG	HG	RHR	LHR	STL	1	2	1,3
GENERATOR	107A	3'-4" X 7'-0"	STL	F	-	LHR	-	STL	1	-	1,3

MATERIAL		TYPE		SWING	
STL	STEEL	F	FLUSH (NO GLASS)	LH	LEFT HAND
AL	ALUMINUM	HG	HALF GLASS	RH	RIGHT HAND
		FD	FLOOR DOOR	LHR	LEFT HAND REVERSE
		OD	OVERHEAD DOOR	RHR	RIGHT HAND REVERSE
		NG	NARROW GLASS	SL	SINGLE LEAF
				DL	DOUBLE LEAF

NOTES:  
1. SEE SPECIFICATIONS FOR HARDWARE GROUPS.  
2. TYPE J. WITH SAFETY GRATE.  
3. SEE FLOOR PLAN AND LINTEL SCHEDULE.  
4. TYPE J-H2O LOAD RATED WITH SAFETY GRATE.



LINTEL SCHEDULE			
MARK	DESCRIPTION	SKETCH	REMARKS
L1	8" BOND BEAM W/ 2 - #5 BOTTOM		8" BEARING EACH END
L2	16" BOND BEAM W/ 2 - #5 BOTTOM		8" BEARING EACH END
L3	W8 X 15 WITH 1/8" X 7" PLATE WELDED TO BOTTOM OF BEAM		8" BEARING EACH END
L3	W8 X 15 WITH 1/8" X 15" PLATE WELDED TO BOTTOM OF BEAM		8" BEARING EACH END

NOTE:  
ALL STEEL LINTELS IN EXTERIOR WALL TO BE GALVANIZE COATED

REVISIONS		
REV. NO.	DESCRIPTION	DATE
1	ADDENDUM 1	4/22/21
3	ADDENDUM 4	5/05/21